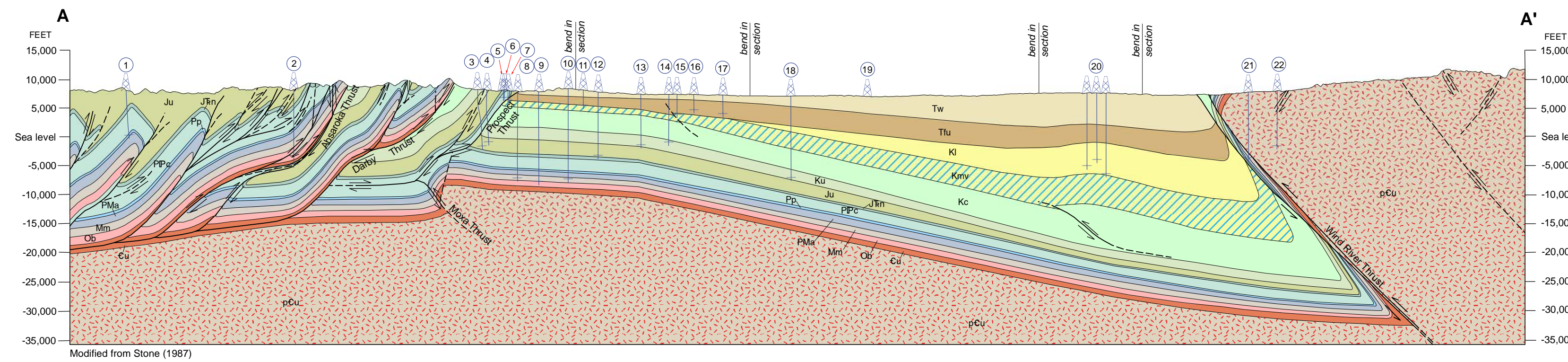


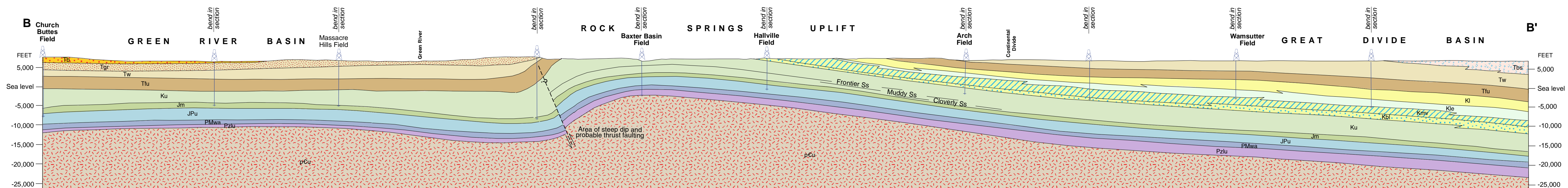


GEOLOGIC CROSS SECTIONS, GREATER GREEN RIVER BASIN, WYOMING

Vertical exaggeration ~ 2x



Modified from Stone (1987)



Modified from Root and others (1973)

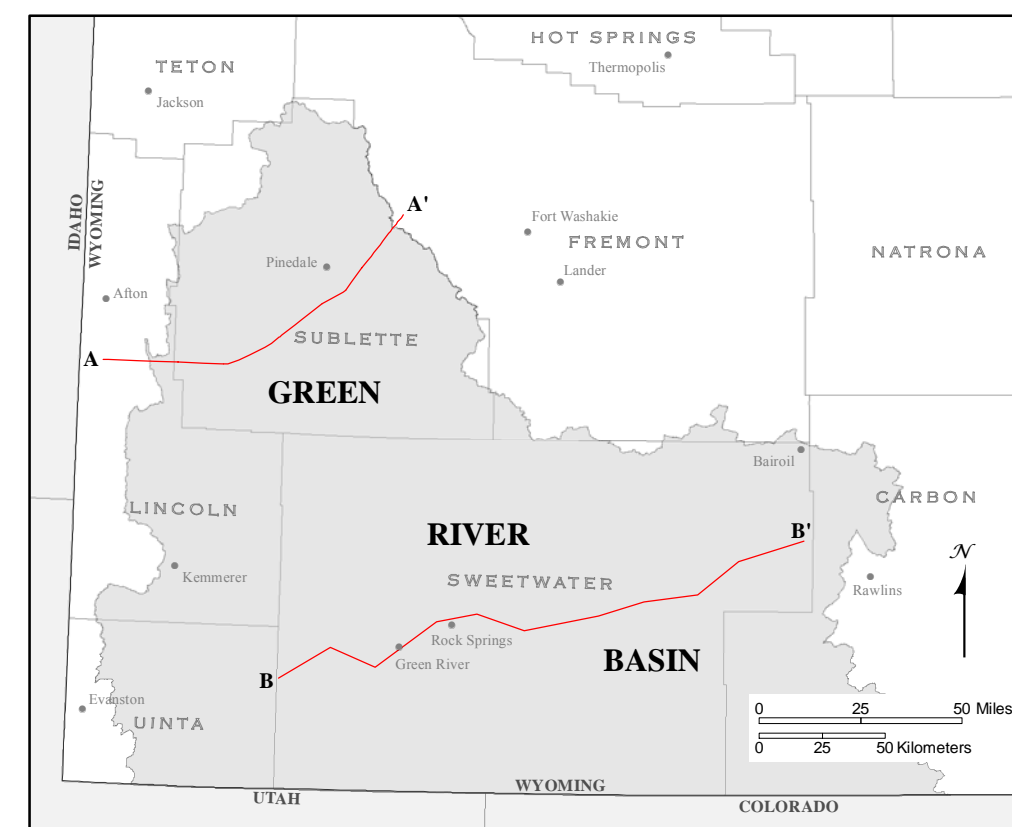
EXPLANATION

CROSS SECTION SYMBOLS

- Formation contact
- Fault - Dashed where inferred; arrows indicate relative movement
- Drill hole - Well logs used to construct cross sections

GEOLOGIC UNITS

- | | | |
|--|--|---|
| CENOZOIC | Jurassic | Mississippian |
| Tertiary | Jm Morrison Formation | Pmwa Weber and Tensleep Sandstones, and Amsden Formation |
| Tb Bridger Formation | Ju Jurassic rocks, undifferentiated | Pzlu Lower Paleozoic rocks, undifferentiated |
| Tgr Green River Formation | JuT Jurassic and Triassic | Mm Madison Limestone |
| Tbs Battle Springs Formation | Jm Nugget Sandstone | Ob Devonian and Ordovician |
| Tw Wasatch Formation | JmT Jurassic, Triassic, and Permian | Cu Cambrian |
| Tlu Fort Union Formation | JmT Jurassic, Triassic, and Permian rocks, undifferentiated | Cu Cambrian rocks, undifferentiated |
| MESOZOIC | PALEOZOIC | PRECAMBRIAN |
| Cretaceous | Pp Permian | pCu Precambrian rocks, undifferentiated |
| Kl Lance Formation | Pp Phosphoria Formation | |
| Kle Lewis Shale | Pp Permian and Pennsylvanian | |
| Km Mesaverde Formation | Pp Permian and Pennsylvanian | |
| Kc Cody Shale | Pp Permian and Pennsylvanian | |
| Kb Blair Formation | Pp Permian, Pennsylvanian, and Mississippian | |
| Ku Cretaceous rocks, undifferentiated | Pp Phosphoria, Wells, and Amsden Formations | |



CROSS SECTION LOCATION MAP

REFERENCES

- Root, F.K., Glass, G.B., and Lane, D.W., 1973, Sweetwater County, Wyoming—Geologic map atlas and summary of economic mineral resources: Geological Survey of Wyoming [Wyoming State Geological Survey], County Resource Series, no. 2.
- Stone, D.S., 1987, Rocky Mountain Transect—Wyoming, transect segments SW 7, SW 6, SW 5, SW 4: Littleton, Co., DVD, version 2.0.

ACKNOWLEDGMENT

The Wyoming State Geological Survey thanks D.S. Stone for his permission to modify portions of the Rocky Mountain Transect, as shown in cross section A - A'.

Layout and design by Robin W. Lyons and Phyllis A. Ranz
 Edited by Suzanne C. Luhr

WELL CONTROL ALONG CROSS SECTIONS

Well no.	API no.	Operator	Well name	Bottom formation	Surface location			County	Spud year
					sec.	T.	R.		
1	49-023-20474	Champion Ventures Inc.	Federal 34A-9 1	Pennsylvanian	9	30 N	119 W	Lincoln	1981
2	49-023-20466	Atlantic Richfield Company	USA Poker Hollow 1-9	Bear River	9	29 N	117 W	Lincoln	1982
3	49-035-20316	Pacific Enterprises Oil Co. USA	Federal 23-15	Nugget	15	29 N	115 W	Sublette	1974
4	49-035-06083	Chevron USA Inc.	Tierney 1	Twin Creek	15	29 N	115 W	Sublette	1947
5	49-035-06093	Chevron USA Inc.	Bushnell 1	Triassic	11	29 N	115 W	Sublette	1927
6	49-035-06088	Chevron USA Inc.	Govt 1	Triassic	11	29 N	115 W	Sublette	1928
7	49-035-06091	Chevron USA Inc.	Bushnell 2	Cretaceous	11	29 N	115 W	Sublette	1928
8	49-035-20670	Denbury Onshore LLC	Riley Ridge Fed 12-43	Devonian	12	29 N	115 W	Sublette	1981
9	49-035-20537	Denbury Onshore LLC	Riley Ridge 8-24	Bighorn	8	29 N	114 W	Sublette	1979
10	49-035-20603	Denbury Onshore LLC	Riley Ridge Fed 10-14	Darby	10	29 N	114 W	Sublette	1980
11	49-035-20047	Wexpro Company	Govt 1	Cretaceous	11	29 N	114 W	Sublette	1968
12	49-035-20634	Pacific Enterprises Oil Co USA	Federal 1-12	Nugget	12	29 N	114 W	Sublette	1981
13	49-035-20430	EOG Resources Inc.	Thompson 2-8	Cretaceous	8	29 N	113 W	Sublette	1977
14	49-035-06115	EOG Resources Inc.	Unit 3	Frontier	3	29 N	113 W	Sublette	1959
15	49-035-06114	EOG Resources Inc.	Unit 1	Mesaverde	3	29 N	113 W	Sublette	1962
16	49-035-06113	EOG Resources Inc.	Fed E 022769A B48	Fort Union	1	29 N	113 W	Sublette	1959
17	49-035-20066	Shenandoah Energy Inc.	Belco-Govt 1	Tertiary	31	30 N	112 W	Sublette	1968
18	49-035-20528	Woods Petroleum Corporation	Guio 23-1	Morrison	23	30 N	112 W	Sublette	1979
19	49-035-06178	Phillips Petroleum Company	Unit C 2	-----	6	30 N	111 W	Sublette	1958
20	49-035-20620	QEP Energy Company	Mesa Unit 2	Fort Union	16	32 N	109 W	Sublette	1981
21	49-035-20265	Husky Oil Company	Federal 8-2	Nugget	2	29 N	106 W	Sublette	1973
22	-----	-----	Air Force Exploratory A	Precambrian	2	32 N	107 W	Sublette	-----

DISCLAIMERS

The Wyoming State Geological Survey (WSGS) and the State of Wyoming make no representation or warranty, expressed or implied, regarding the use, accuracy, or completeness of the data presented herein, or of a map printed from these data. The act of distribution shall not constitute such a warranty. The WSGS does not guarantee the digital data or any map printed from the data to be free of errors or inaccuracies.

The WSGS and the State of Wyoming disclaim any responsibility or liability for interpretations made from these digital data or from any map printed from these digital data, and for any decisions based on the digital data or printed maps. The WSGS and the State of Wyoming retain and do not waive sovereign immunity.

The use of or reference to trademarks, trade names, or other product or company names in this publication is for descriptive or informational purposes only, or is pursuant to licensing agreements between the WSGS or State of Wyoming and software or hardware developers/vendors, and does not imply endorsement of those products by the WSGS or the State of Wyoming.

NOTICE TO USERS OF INFORMATION FROM THE WYOMING STATE GEOLOGICAL SURVEY

The WSGS encourages the fair use of its material. We request that credit be expressly given to the "Wyoming State Geological Survey" when citing information from this publication. Please contact the WSGS at 307-766-2286, ext. 224, or by email at wsgs.sales@wyo.gov if you have questions about citing materials, preparing acknowledgments, or extensive use of this material. We appreciate your cooperation.

Individuals with disabilities who require an alternative form of this publication should contact the WSGS. For the TTY relay operator call 1-800-877-9975.

For more information about the WSGS or to order publications and maps, go to www.wsgs.uwyo.edu, call 307-766-2286, ext. 224, or email wsgs.sales@wyo.gov.