

Disclaimer
 The Wyoming State Geological Survey (WSGS) and the State of Wyoming make no representation or warranty, expressed or implied, regarding the use, accuracy, or completeness of the data presented herein. The act of distribution shall not constitute such a warranty. The WSGS does not guarantee this product to be free of errors or inaccuracies.

The WSGS and the State of Wyoming disclaim any responsibility or liability for interpretations made from these data and for any decisions based on the data. The WSGS and the State of Wyoming retain and do not waive sovereign immunity.

The use of or reference to trademarks, trade names, or other product or company names in this publication is for descriptive or informational purposes, or is pursuant to licensing agreements between the WSGS or State of Wyoming and software or hardware developers/vendors, and does not imply endorsement of those products by the WSGS or the State of Wyoming.

Acknowledgements:
 The Wyoming State Geological Survey thanks the Wyoming Water Development Commission for funding of the Powder River Basin projects, the U.S. Geological Survey for continued funding and support through the National Coal Resource Assessment program, the Wyoming Oil and Gas Conservation Commission for supplying scanned images of geophysical well logs, and the Wyoming Department of Environmental Quality - Water Quality Division for its contributions to the Powder River drainage coal assessment for their Assimilative Capacity Project.

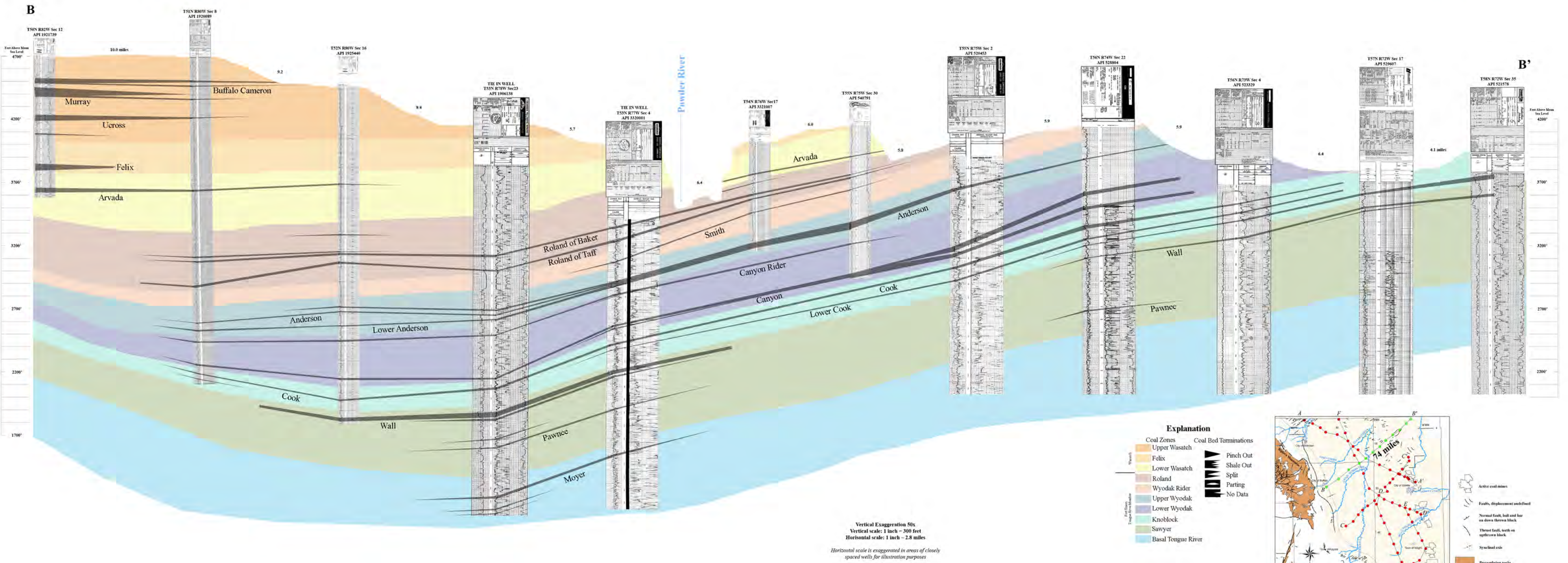
Coal correlations and coal zones in the Powder River Basin, Wyoming

Cross Section A-A'
 by
 Nick R. Jones and James R. Rodgers
 2007

The authors acknowledge the work of the following previous investigators for their contributions and interpretations: Bohor and others (1979), Culbertson (1975), Denson and others (1978, 1991), Grazis (1977), Haddock and others (1976), Hardie and Van Gosen (1986), Kent and others (1976, 1977, 1978, 1979, 1981), Law (1978), Mapel (1954, 1976), Molina (1988), and Weaver and Flores (1985)

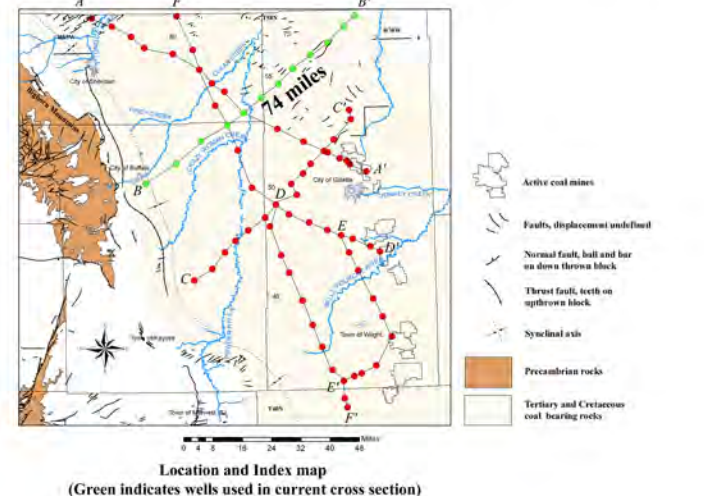
Complete citations for these references are included in the text for this report.

Notice to users of Wyoming State Geological Survey information: Most information produced by the Wyoming State Geological Survey (WSGS) is public domain, is not copyrighted, and may be used without restriction. We ask that users credit the WSGS as a courtesy when using this information in whole or in part. This applies to published and unpublished materials in printed or electronic form. Contact the WSGS if you have any questions about citing materials or preparing acknowledgements. Your cooperation is appreciated.



Explanation

Coal Zones	Coal Bed Terminations
Upper Wasatch	Pinch Out
Felix	Shale Out
Lower Wasatch	Split
Roland	Parting
Wyodak Rider	No Data
Upper Wyodak	
Lower Wyodak	
Knoblock	
Sawyer	
Basal Tongue River	



Coal Correlations and Coal Zones in the Powder River Basin, Wyoming

Cross Section B-B'

by
 Nick R. Jones and James R. Rodgers
 2007

Acknowledgements:
 The Wyoming State Geological Survey thanks the Wyoming Water Development Commission for funding of the Powder River Basin projects, the U.S. Geological Survey for continued funding and support through the National Coal Resource Assessment program, the Wyoming Oil and Gas Conservation Commission for supplying scanned images of geophysical well logs, and the Wyoming Department of Environmental Quality - Water Quality Division for its contributions to the Powder River drainage coal assessment for their Assimilative Capacity Project.

The authors acknowledge the work of the following previous investigators for their contributions and interpretations: Bohor and others (1979), Culbertson (1975), Denson and others (1978, 1991), Graziis (1977), Haddock and others (1976), Hardie and Van Gosen (1986), Kent and others (1976, 1977, 1978, 1979, 1981), Law (1978), Mapel (1954, 1976), Molina (1988), and Weaver and Flores (1985).

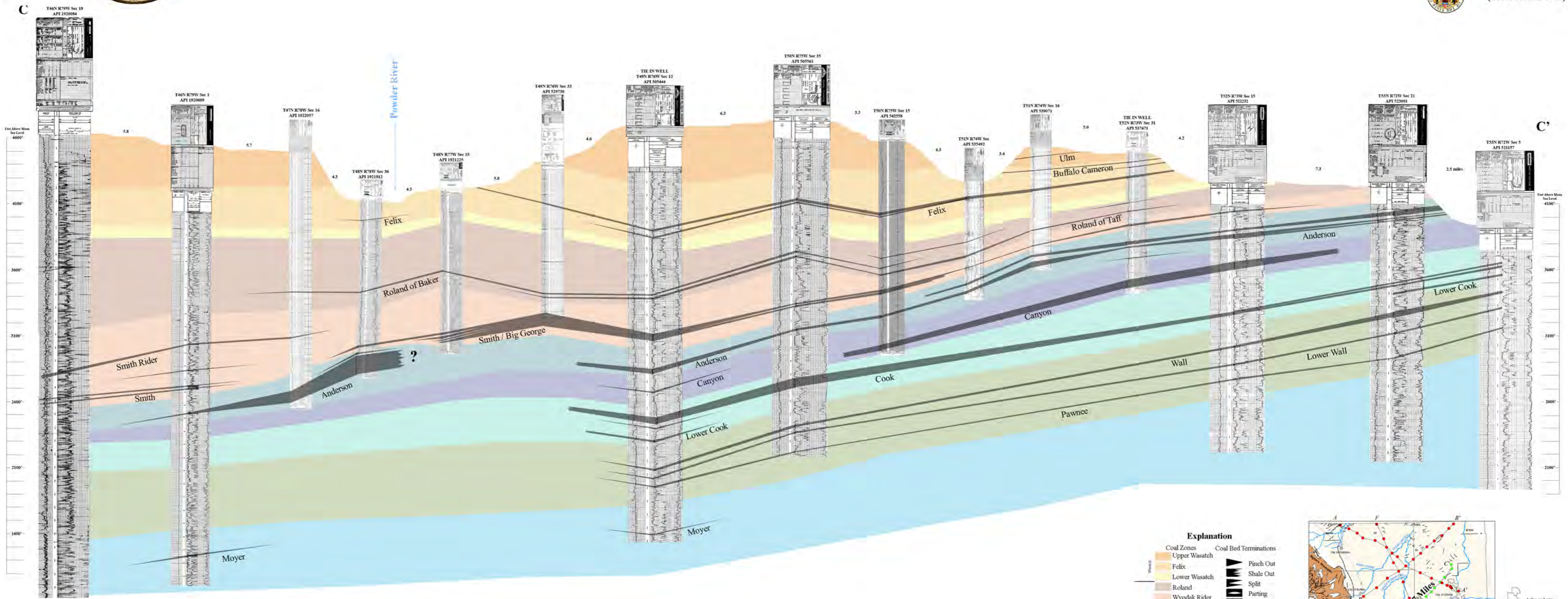
Notice to users of Wyoming State Geological Survey information: Most information produced by the Wyoming State Geological Survey (WSGS) is public domain, is not copyrighted, and may be used without restriction. We ask that users credit the WSGS as a courtesy when using this information in whole or in part. This applies to published and unpublished materials in printed or electronic form. Contact the WSGS if you have any questions about citing materials or preparing acknowledgements. Your cooperation is appreciated.

Disclaimer
 The Wyoming State Geological Survey (WSGS) and the State of Wyoming make no representation or warranty, expressed or implied, regarding the use, accuracy, or completeness of the data presented herein. The act of distribution shall not constitute such a warranty. The WSGS does not guarantee this product to be free of errors or inaccuracies.

The WSGS and the State of Wyoming disclaim any responsibility or liability for interpretations made from these data and for any decisions based on the data. The WSGS and the State of Wyoming retain and do not waive sovereign immunity.

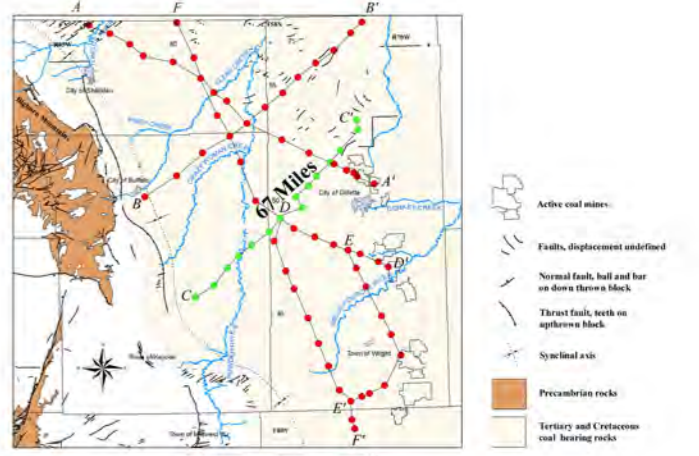
The use of or reference to trademarks, trade names, or other product or company names in this publication is for descriptive or informational purposes, or is pursuant to licensing agreements between the WSGS or State of Wyoming and software or hardware developers/vendors, and does not imply endorsement of those products by the WSGS or the State of Wyoming.

Complete citations for these references are included in the text for this report.



Vertical Exaggeration 50x
 Vertical scale: 1 inch = 300 feet
 Horizontal scale: 1 inch = 2.5 miles
 Horizontal scale is exaggerated in areas of closely spaced wells for illustration purposes

Explanation	
Coal Zones	Coal Bed Terminations
Upper Wasatch	Pinch Out
Felix	Shale Out
Lower Wasatch	Split
Roland	Parting
Wyodak Rider	No Data
Upper Wyodak	
Lower Wyodak	
Knoblock	
Sawyer	
Basal Tongue River	



Location and Index map
 (Green indicates wells used in current cross section)

Coal correlation and coal zones in the Powder River Basin, Wyoming

Cross Section C-C'

by
 Nick R. Jones and James R. Rodgers
 2007

Acknowledgements:
 The Wyoming State Geological Survey thanks the Wyoming Water Development Commission for funding of the Powder River Basin projects, the U.S. Geological Survey for continued funding and support through the National Coal Resource Assessment program, the Wyoming Oil and Gas Conservation Commission for supplying scanned images of geophysical well logs, and the Wyoming Department of Environmental Quality - Water Quality Division for its contributions to the Powder River drainage coal assessment for their Assimilative Capacity Project.

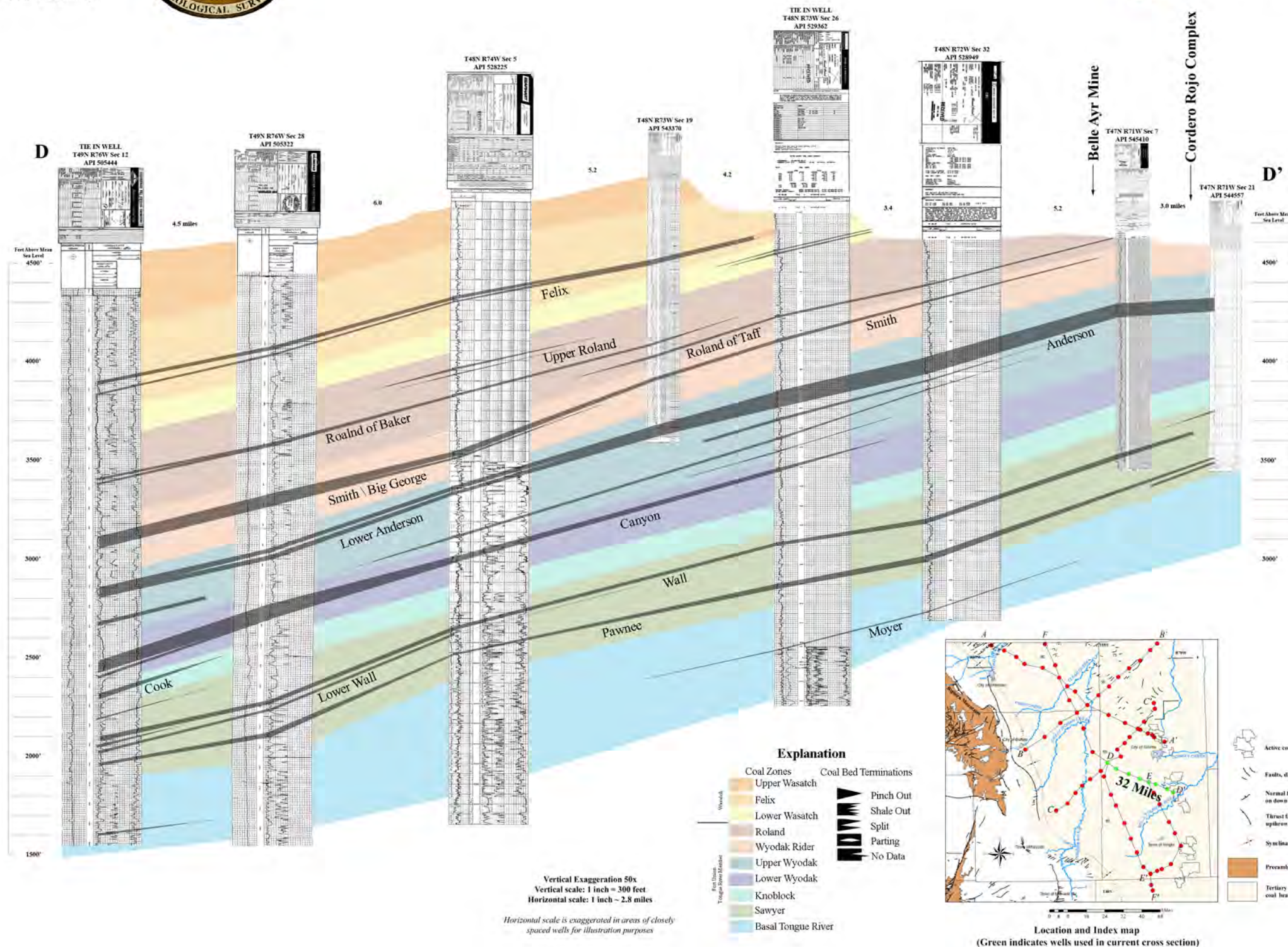
The authors acknowledge the work of the following previous investigators for their contributions and interpretations: Bohar and others (1979), Culbertson (1975), Denson and others (1978, 1991), Grazis (1977), Haddock and others (1976), Hardie and Van Gosen (1986), Kent and others (1976, 1977, 1978, 1979, 1981), Law (1978), Mapel (1954, 1976), Molina (1988), and Weaver and Flores (1985)

Complete citations for these references are included in the text for this report.

Disclaimer
 The Wyoming State Geological Survey (WSGS) and the State of Wyoming make no representation or warranty, expressed or implied, regarding the use, accuracy, or completeness of the data presented herein. The act of distribution shall not constitute such a warranty. The WSGS does not guarantee this product to be free of errors or inaccuracies.
 The WSGS and the State of Wyoming disclaim any responsibility or liability for interpretations made from these data and for any decisions based on the data.
 The WSGS and the State of Wyoming retain and do not waive sovereign immunity.

The use of or reference to trademarks, trade names, or other product or company names in this publication is for descriptive or informational purposes, or is pursuant to licensing agreements between the WSGS or State of Wyoming and software or hardware developers/vendors, and does not imply endorsement of those products by the WSGS or the State of Wyoming.

Notice to users of Wyoming State Geological Survey information: Most information produced by the Wyoming State Geological Survey (WSGS) is public domain, is not copyrighted, and may be used without restriction. We ask that users credit the WSGS as a courtesy when using this information in whole or in part. This applies to published and unpublished materials in printed or electronic form. Contact the WSGS if you have any questions about citing materials or preparing acknowledgements. Your cooperation is appreciated.



Coal correlation and coal zones in the Powder River Basin, Wyoming

Cross Section D-D'

by
 Nick R. Jones and James R. Rodgers
 2007

Disclaimer

The Wyoming State Geological Survey (WSGS) and the State of Wyoming make no representation or warranty, expressed or implied, regarding the use, accuracy, or completeness of the data presented herein. The act of distribution shall not constitute such a warranty. The WSGS does not guarantee this product to be free of errors or inaccuracies.

The WSGS and the State of Wyoming disclaim any responsibility or liability for interpretations made from these data and for any decisions based on the data. The WSGS and the State of Wyoming retain and do not waive sovereign immunity.

The use of or reference to trademarks, trade names, or other product or company names in this publication is for descriptive or informational purposes, or is pursuant to licensing agreements between the WSGS or State of Wyoming and software or hardware developers/vendors, and does not imply endorsement of those products by the WSGS or the State of Wyoming.

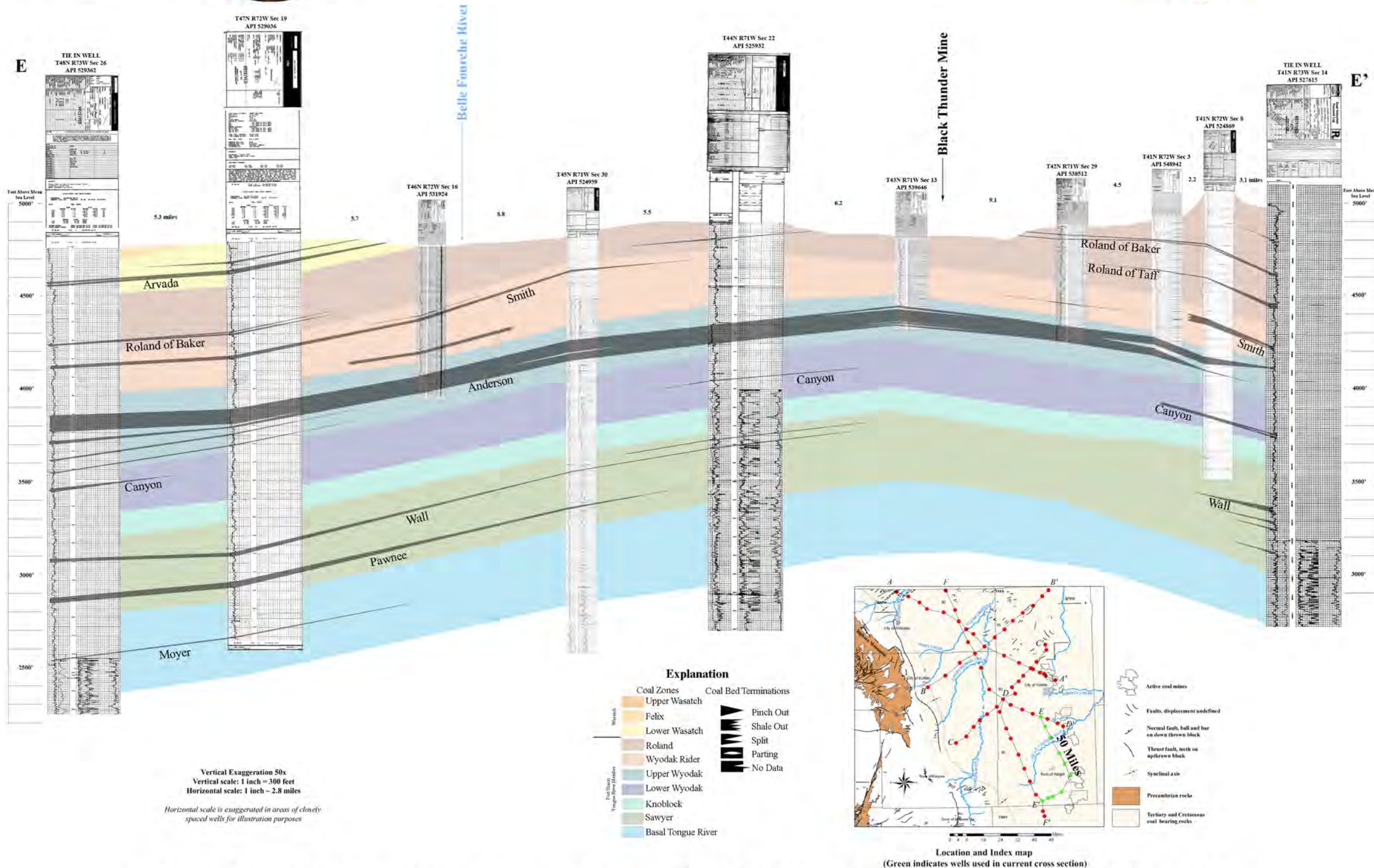
Acknowledgements:

The Wyoming State Geological Survey thanks the Wyoming Water Development Commission for funding of the Powder River Basin projects, the U.S. Geological Survey for continued funding and support through the National Coal Resource Assessment program, the Wyoming Oil and Gas Conservation Commission for supplying scanned images of geophysical well logs, and the Wyoming Department of Environmental Quality - Water Quality Division for its contributions to the Powder River drainage coal assessment for their Assimilative Capacity Project.

Notice to users of Wyoming State Geological Survey information: Most information produced by the Wyoming State Geological Survey (WSGS) is public domain, is not copyrighted, and may be used without restriction. We ask that users credit the WSGS as a courtesy when using this information in whole or in part. This applies to published and unpublished materials in printed or electronic form. Contact the WSGS if you have any questions about citing materials or preparing acknowledgements. Your cooperation is appreciated.

The authors acknowledge the work of the following previous investigators for their contributions and interpretations: Bohor and others (1979), Culbertson (1975), Denson and others (1978, 1991), Grazis (1977), Haddock and others (1976), Hardie and Van Gosen (1986), Kent and others (1976, 1977, 1978, 1979, 1981), Law (1978), Mapel (1954, 1976), Molina (1988), and Weaver and Flores (1985)

Complete citations for these references are included in the text for this report.



Coal correlations and coal zones in the Powder River Basin, Wyoming

Cross Section E-E'

by
 Nick R. Jones and James R. Rodgers
 2007

Disclaimer

The Wyoming State Geological Survey (WSGS) and the State of Wyoming make no representation or warranty, expressed or implied, regarding the use, accuracy, or completeness of the data presented herein. The act of distribution shall not constitute such a warranty. The WSGS does not guarantee this product to be free of errors or inaccuracies.

The WSGS and the State of Wyoming disclaim any responsibility or liability for interpretations made from these data and for any decisions based on the data. The WSGS and the State of Wyoming retain and do not waive sovereign immunity.

The use of or reference to trademarks, trade names, or other product or company names in this publication is for descriptive or informational purposes, or is pursuant to licensing agreements between the WSGS or State of Wyoming and software or hardware developers/vendors, and does not imply endorsement of those products by the WSGS or the State of Wyoming.

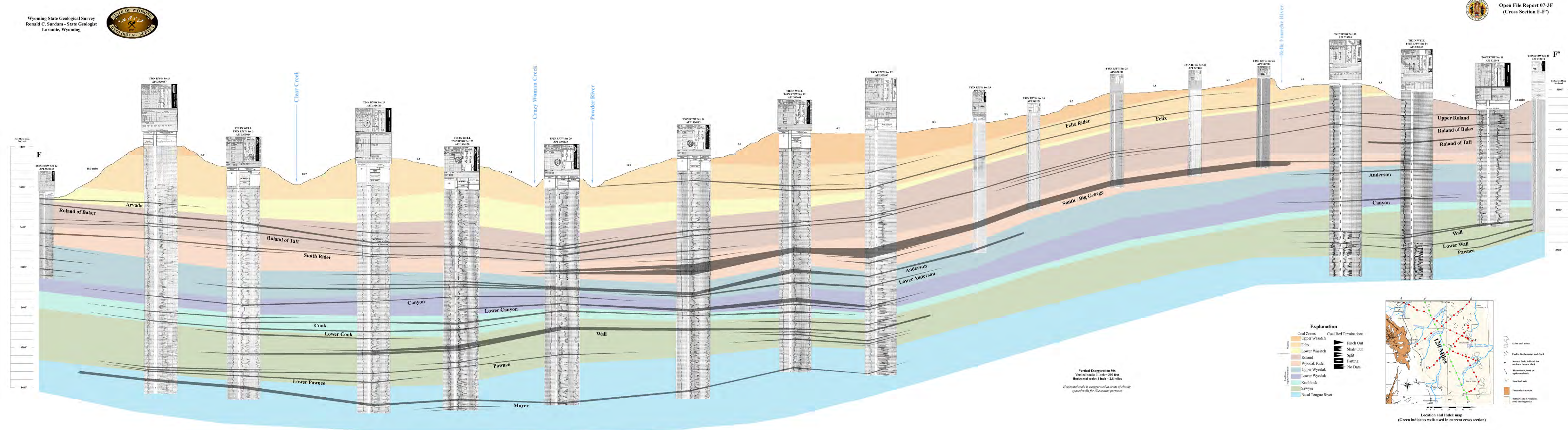
Acknowledgements:

The Wyoming State Geological Survey thanks the Wyoming Water Development Commission for funding of the Powder River Basin projects, the U.S. Geological Survey for continued funding and support through the National Coal Resource Assessment program, the Wyoming Oil and Gas Conservation Commission for supplying scanned images of geophysical well logs, and the Wyoming Department of Environmental Quality - Water Quality Division for its contributions to the Powder River drainage coal assessment for their Assimilative Capacity Project.

Notice to users of Wyoming State Geological Survey information: Most information produced by the Wyoming State Geological Survey (WSGS) is public domain, is not copyrighted, and may be used without restriction. We ask that users credit the WSGS as a courtesy when using this information in whole or in part. This applies to published and unpublished materials in printed or electronic form. Contact the WSGS if you have any questions about citing materials or preparing acknowledgements. Your cooperation is appreciated.

The authors acknowledge the work of the following previous investigators for their contributions and interpretations: Bohor and others (1979), Culbertson (1975), Denson and others (1978, 1991), Grazis (1977), Haddock and others (1976), Hardie and Van Gosen (1986), Kent and others (1976, 1977, 1978, 1979, 1981), Law (1978), Mapel (1954, 1976), Molina (1988), and Weaver and Flores (1985)

Complete citations for these references are included in the text for this report.



Disclaimer
 The Wyoming State Geological Survey (WSGS) and the State of Wyoming make no representation or warranty, expressed or implied, regarding the use, accuracy, or completeness of the data presented herein. The act of distribution shall not constitute such a warranty. The WSGS does not guarantee this product to be free of errors or inaccuracies.

The WSGS and the State of Wyoming disclaim any responsibility or liability for interpretations made from these data and for any decisions based on the data. The WSGS and the State of Wyoming retain and do not waive sovereign immunity.

The use of or reference to trademarks, trade names, or other product or company names in this publication is for descriptive or informational purposes, or is pursuant to licensing agreements between the WSGS or State of Wyoming and software or hardware developers/vendors, and does not imply endorsement of those products by the WSGS or the State of Wyoming.

Acknowledgements:
 The Wyoming State Geological Survey thanks the Wyoming Water Development Commission for funding of the Powder River Basin projects, the U.S. Geological Survey for continued funding and support through the National Coal Resource Assessment program, the Wyoming Oil and Gas Conservation Commission for supplying scanned images of geophysical well logs, and the Wyoming Department of Environmental Quality - Water Quality Division for its contributions to the Powder River drainage coal assessment for their Assimilative Capacity Project.

Coal correlation and coal zones in the Powder River Basin, Wyoming

Cross Section F-F'

by
 Nick R. Jones and James R. Rodgers
 2007

Notice to users of Wyoming State Geological Survey information: Most information produced by the Wyoming State Geological Survey (WSGS) is public domain, is not copyrighted, and may be used without restriction. We ask that users credit the WSGS as a courtesy when using this information in whole or in part. This applies to published and unpublished materials in printed or electronic form. Contact the WSGS if you have any questions about citing materials or preparing acknowledgements. Your cooperation is appreciated.

The authors acknowledge the work of the following previous investigators for their contributions and interpretations: Bohor and others (1979), Culbertson (1975), Denson and others (1976, 1991), Graess (1977), Haddock and others (1976), Hardie and Van Gosen (1986), Kent and others (1976, 1977, 1978, 1979, 1981), Law (1978), Mapel (1954, 1976), Molina (1988), and Weaver and Flores (1985).

Complete citations for these references are included in the text for this report.