



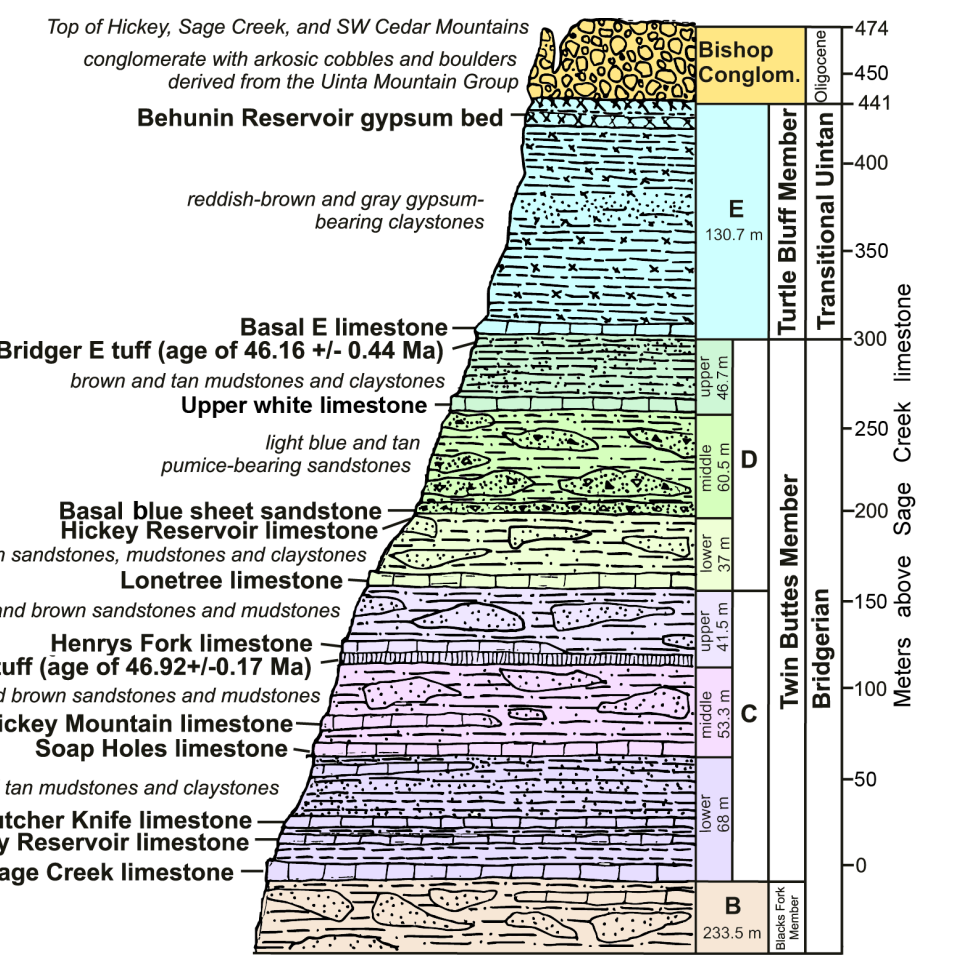
EXPLANATION

GEOLOGIC MAP UNITS

- TBI** BISHOP CONGLOMERATE (Oligocene)
- BRIDGER FORMATION** (early and middle Eocene)
  - TbE** *Turtle Bluff Member* (Bridger E) (middle Eocene)
  - Twin Buttes Member* ("Upper Bridger" or Bridger C and D) (middle Eocene)
    - TbDu upper Bridger D
    - TbDm middle Bridger D
    - TbDl lower Bridger D
  - TbCu upper Bridger C
  - TbCm middle Bridger C
  - TbCl lower Bridger C
- Blacks Fork Member* ("Lower Bridger" or Bridger A and B) (early and middle Eocene)
  - TbBu upper Bridger B
  - TbBm middle Bridger B \*
  - TbBl lower Bridger B \*
  - TbA Bridger A \*

\* not present on this map

GENERALIZED STRATIGRAPHIC SECTION IN THE AREA OF HICKEY, SAGE CREEK, AND CEDAR MOUNTAINS



MAP SYMBOLS

- HFT** Marker unit, exposed; see ABBREVIATIONS FOR MARKER UNITS
- SHLS** Marker unit, inferred where poorly exposed; see ABBREVIATIONS FOR MARKER UNITS
- b** Measured section; dotted lined indicates break or offset; see KEY TO MEASURED SECTIONS
- ★** Location of Type Locality for marker units listed below

ABBREVIATIONS FOR MARKER UNITS (red indicates units shown on this map)

- BBI** Base of Bishop Conglomerate
- BRGB** Behunin Reservoir gypsum bed
- BELS** Basal E limestone
- ULS** Upper white limestone
- BBS** Basal blue sheet sandstone
- BBS** Approximate level of Basal blue sheet sandstone
- HRL** Hickey Reservoir limestone
- LTLS** Lonree limestone
- HFLS** Henrys Fork limestone
- HFT** Henrys Fork tuff
- BFLS** Burnt Fork limestone
- HRRB** Horse Ranch red bed
- HMLS** Hickey Mountain limestone
- SHLS** Soap Holes limestone
- BKLS** Butcher Knife limestone
- WRLS** Whiskey Reservoir limestone
- SCLS** Sage Creek limestone

KEY TO MEASURED SECTIONS (blue indicates sections shown on this map)

Map reference	Name of measured section	Reference sources *
a	Reference S section, Twin Buttes Member (Northeast Sage Creek Mountain)	Appendix 2, Table 18
b	Southwest Sage Creek Mountain	Appendix 5, Table 20
c	Southwest Cedar Mountain	Appendix 3, Table 19
d	Type Section, Turtle Bluff Member (West Cedar Mountain)	Appendix 4, Table 19
e	Southeast Cedar Mountain	Appendix 6, Table 21
f	Type Section, Twin Buttes Member (Southeast Twin Buttes)	Appendix 1, Table 17
g	Northeast Hickey Mountain	Table 22
h	Northeast Sage Creek Mountain	Table 23
i	South Cedar Mountain	Table 25
j	North Cedar Mountain	Table 24
k	Northeast Cedar Mountain	Table 27
l	Northeast Mass Mountain	Table 26
m	Northwest Black Mountain	Table 29
n	Northwest Twin Buttes	Table 28

\* Refer to Wyoming State Geological Survey Report of Investigation 57 (2007).

DISCLAIMERS

Users of these maps are cautioned about using the data at scales different than those at which the maps were compiled — using this data at a larger scale will not provide greater accuracy, and in fact, it is a misuse of the data.

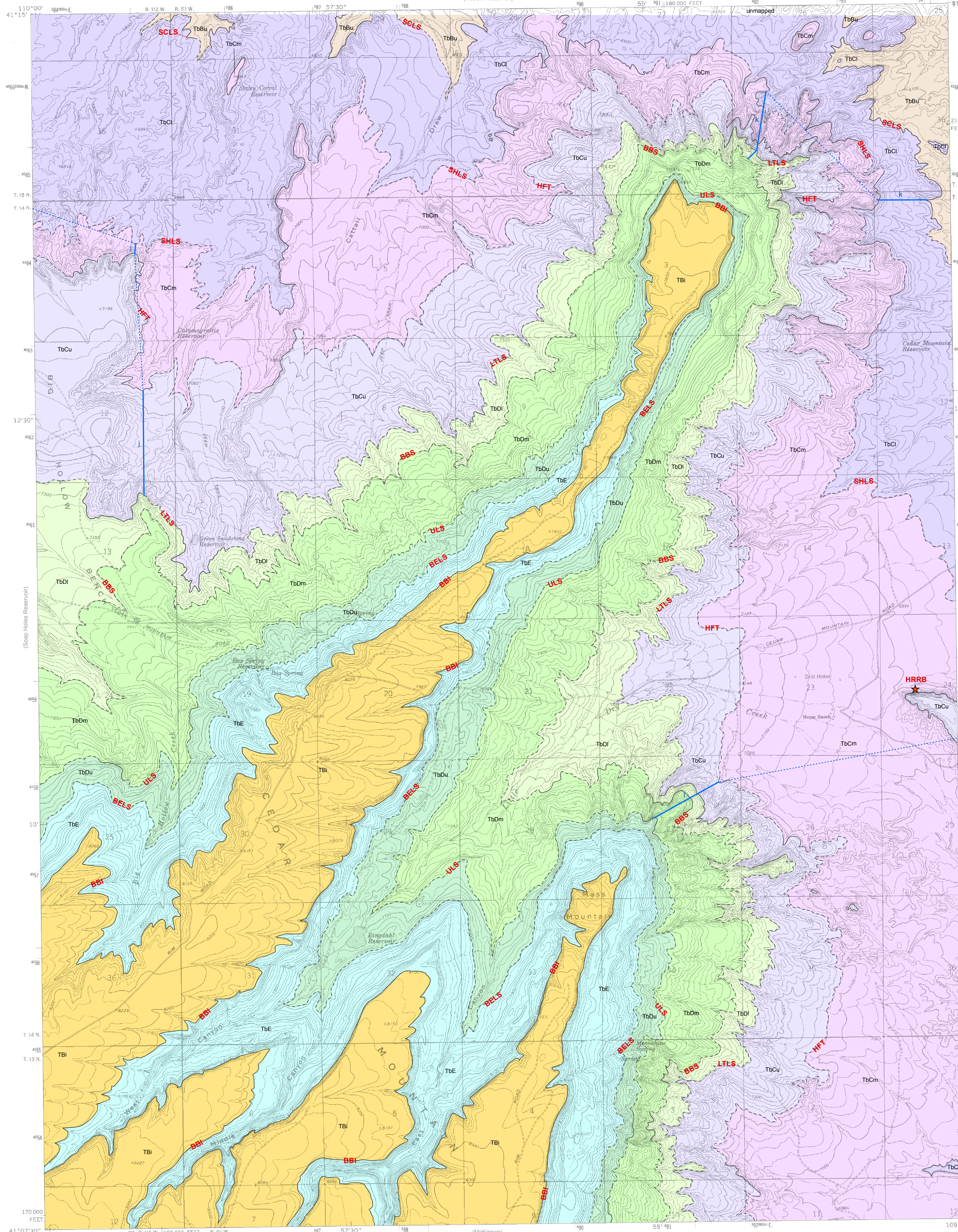
The Wyoming State Geological Survey (WSGS) and the State of Wyoming makes no representation or warranty, expressed or implied, regarding the use, accuracy, or completeness of the data presented herein, or from a map printed from these data; nor shall the act of distribution constitute any such warranty. The WSGS does not guarantee these digital data herein, or map printed from these data, to be free of errors or inaccuracies.

The WSGS and the State of Wyoming disclaims any responsibility or liability for interpretations from this digital data or map printed from these digital data, or decisions based thereon. The WSGS and the State of Wyoming retains and does not waive sovereign immunity.

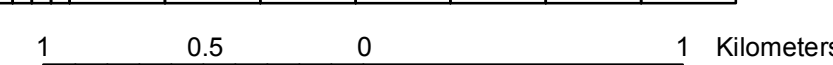
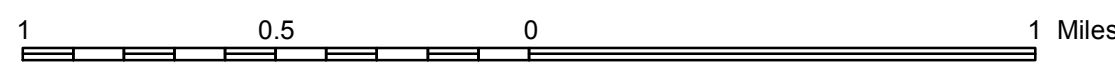
The use of or reference to trademarks, trade names, or other product or company names in this product is for descriptive or informational purposes, or is pursuant to licensing agreements between the WSGS or the State of Wyoming and software or hardware developers/vendors, and does not imply endorsement of these products by the WSGS or the State of Wyoming.

NOTICE TO USERS OF WYOMING STATE GEOLOGICAL SURVEY INFORMATION

Most information produced by the Wyoming State Geological Survey (WSGS) is public domain, is not copyrighted, and may be used without restriction. We ask that users credit the map authors and the WSGS as a courtesy when using this information in whole or in part. This applies to published and unpublished materials in printed or electronic form. Contact the WSGS if you have any questions about citing materials or preparing acknowledgements. Your cooperation is appreciated.



SCALE 1:24,000



Base Map from US Geologic Survey 1:24,000-scale topographic map of the Horse Ranch, Wyoming 7 1/2-minute Quadrangle, 1964  
 Projection: Universal Transverse Mercator (UTM), zone 12 North American Datum of 1927 (NAD 27)  
 1,000 meter grid ticks: UTM zone 12  
 10,000-foot grid ticks: Wyoming State Plane Coordinate System, West zone

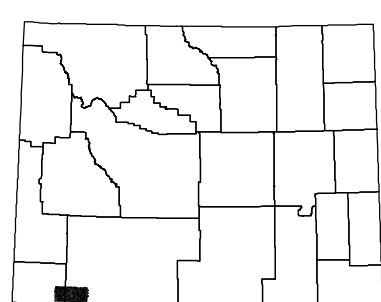
UTM GRID CONVERGENCE (GM)  
 1980 MAGNETIC DECLINATION (MN) AT CENTER OF SHEET  
 DIAGRAM IS APPROXIMATE

CONTOUR INTERVAL 20 FEET  
 NATIONAL GEODETIC VERTICAL DATUM OF 1929

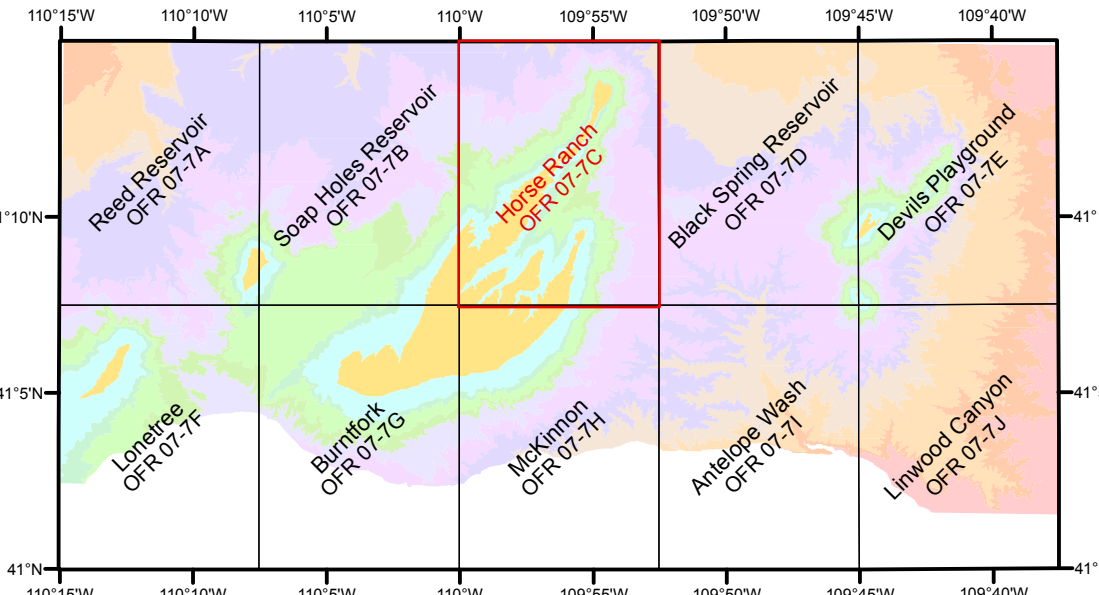
Digital cartography by Justin E. Scott and David W. Lucke  
 A digital version of this map is also available on CD-ROM.

Wyoming State Geological Survey  
 P.O. Box 1347 - Laramie, WY 82073-1347  
 Phone: (307) 756-2266 - Fax: (307) 756-2655  
 Email: wsgs\_sales@uwyo.edu

People with disabilities who require an alternative form of communication in order to use this publication should contact the Editor, Wyoming State Geological Survey, TTY Relay Operator 1 (800) 877-9975f

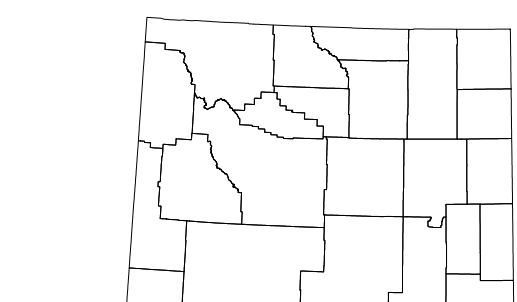


BRIDGER FORMATION PROJECT LOCATION MAP



INDEX MAP OF 1:24,000-SCALE QUADRANGLES

Number indicates Wyoming State Geological Survey Open File Report (OFR) (1:24,000-scale digital geologic maps are included on CD-ROM for RI-57)  
 A 1:100,000-scale geologic map of all quadrangles above is published in Wyoming State Geological Survey Report of Investigations (RI) 57



WYOMING QUADRANGLE LOCATION

BEDROCK GEOLOGIC MAP OF THE HORSE RANCH QUADRANGLE, SWEETWATER COUNTY, SOUTHWESTERN WYOMING

by  
 P.C. Murphey, J.E. Haessig, and L.R. Brand  
 2007