

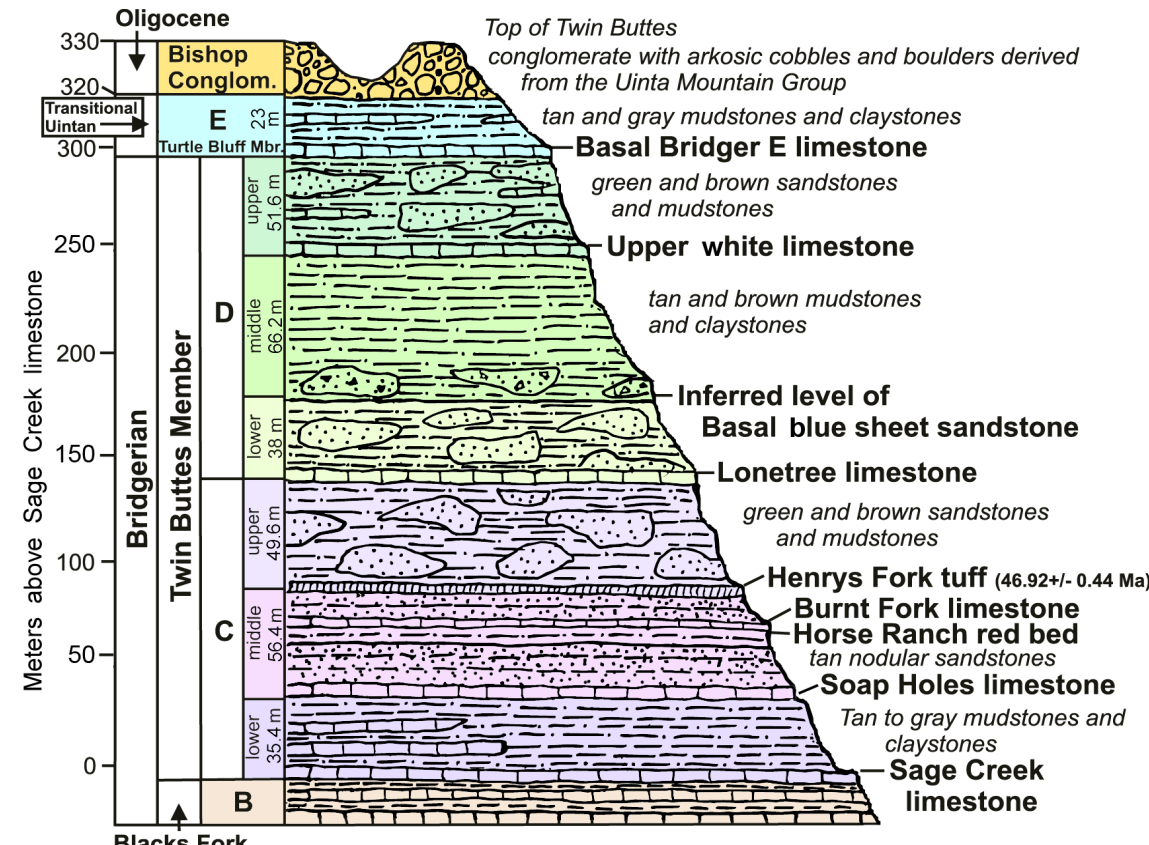


EXPLANATION

GEOLOGIC MAP UNITS

TbB	BISHOP CONGLOMERATE (Oligocene)
TbE	BRIDGER FORMATION (early and middle Eocene)
TbE	<i>Turtle Bluff Member</i> (Bridger E) (middle Eocene)
TbDu	<i>Twin Buttes Member</i> ("Upper Bridger" or Bridger C and D) (middle Eocene)
TbDu	upper Bridger D
TbDm	middle Bridger D
TbDi	lower Bridger D
TbCu	upper Bridger C
TbCm	middle Bridger C
TbCi	lower Bridger C
TbBu	<i>Blacks Fork Member</i> ("Lower Bridger" or Bridger A and B) (early and middle Eocene)
TbBu	upper Bridger B
TbBm	middle Bridger B
TbBi	lower Bridger B
TbA	Bridger A

GENERALIZED STRATIGRAPHIC SECTION IN THE TWIN BUTTES AND BLACK MOUNTAIN AREA



MAP SYMBOLS

HFT	Marker unit, exposed; see ABBREVIATIONS FOR MARKER UNITS
SHLS	Marker unit, inferred where poorly exposed; see ABBREVIATIONS FOR MARKER UNITS
b	Measured section; dotted line indicates break or offset in section; see KEY TO MEASURED SECTIONS
1	Strike and dip of beds

ABBREVIATIONS FOR MARKER UNITS (red indicates units shown on this map)

BBi	Base of Bishop Conglomerate
BRGB	Behunin Reservoir gypsum bed
BELS	Basal E limestone
ULS	Upper white limestone
BBS	Basal blue sheet sandstone
-BBS	Approximate level of Basal blue sheet sandstone
HRL	Hickey Reservoir limestone
LTLS	Lonetree limestone
HFLS	Henry's Fork limestone
HFT	Henry's Fork tuff
BLFS	Burnt Fork limestone
HFRB	Horse Ranch red bed
HMLS	Hickey Mountain limestone
SHLS	Soap Holes limestone
BLKS	Butcher Knife limestone
WRLS	Whiskey Reservoir limestone
SCLS	Sage Creek limestone

KEY TO MEASURED SECTIONS (blue indicates sections shown on this map)

Map reference	Name of measured section	Reference sources *
a	Reference section, Twin Buttes Member (Northeast Sage Creek Mountain)	Appendix 2, Table 18
b	Southwest Sage Creek Mountain	Appendix 5, Table 20
c	Southwest Cedar Mountain	Appendix 3, Table 19
d	Type Section, Turtle Bluff Member (West Cedar Mountain)	Appendix 4, Table 19
e	Southwest Cedar Mountain	Appendix 6, Table 21
f	Type Section, Twin Buttes Member (Southeast Twin Buttes)	Appendix 1, Table 17
g	Northeast Hickey Mountain	Table 22
h	Northeast Sage Creek Mountain	Table 23
i	South Cedar Mountain	Table 25
j	North Cedar Mountain	Table 24
k	Northeast Cedar Mountain	Table 27
l	Northeast Mass Mountain	Table 26
m	Northwest Black Mountain	Table 29
n	Northwest Twin Buttes	Table 28

* Refer to Wyoming State Geological Survey Report of Investigations 57 (2007).

DISCLAIMERS

Users of these maps are cautioned about using the data at scales different than those at which the maps were compiled—using this data at a larger scale will not provide greater accuracy, and in fact, it is a misuse of the data.

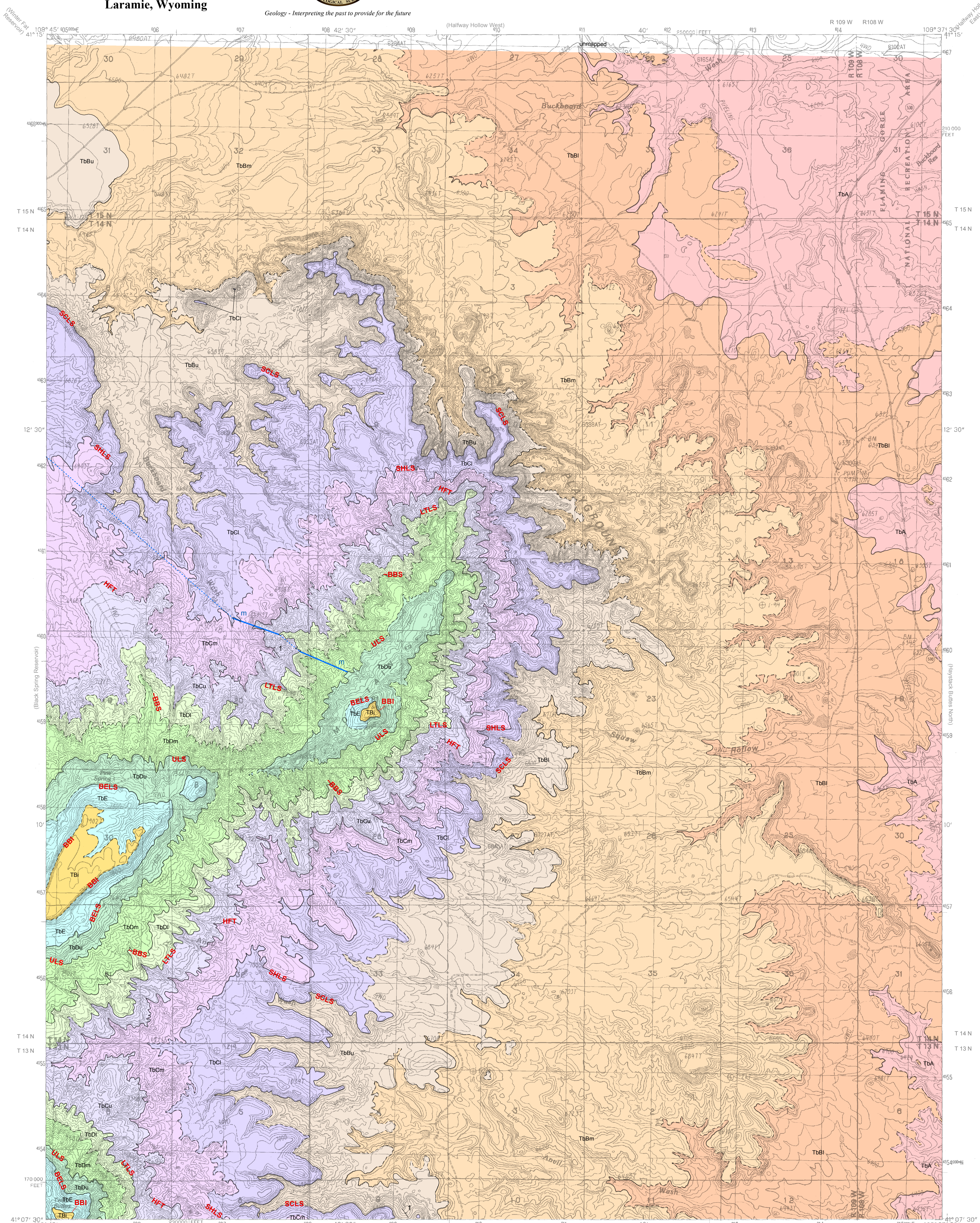
The Wyoming State Geological Survey (WSGS) and the State of Wyoming makes no representation or warranty, expressed or implied, regarding the use, accuracy, or completeness of the data presented herein, or from a map printed from these data; nor shall the act of distribution constitute any such warranty. The WSGS does not guarantee these digital data herein, or map printed from these data, to be free of errors or inaccuracies.

The WSGS and the State of Wyoming disclaims any responsibility or liability for interpretations from this digital data or map printed from these digital data, or decisions based thereon. The WSGS and the State of Wyoming retains and does not waive sovereign immunity.

The use of or reference to trademarks, trade names, or other product or company names in this product is for descriptive or informational purposes, or is pursuant to licensing agreements between the WSGS or the State of Wyoming and software or hardware developers/vendors, and does not imply endorsement of those products by the WSGS or the State of Wyoming.

NOTICE TO USERS OF WYOMING STATE GEOLOGICAL SURVEY INFORMATION

Most information produced by the Wyoming State Geological Survey (WSGS) is public domain, is not copyrighted, and may be used without restriction. We ask that users credit the map authors and the WSGS as a courtesy when using this information in whole or in part. This applies to published and unpublished materials in printed or electronic form. Contact the WSGS if you have any questions about citing materials or preparing acknowledgements. Your cooperation is appreciated.

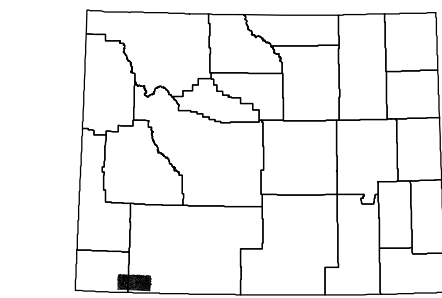


Base Map from U.S. Geological Survey 1:24,000-scale topographic map of the Devils Playground, Wyoming 7 1/2-minute Quadrangle, 1983
Projection: Universal Transverse Mercator (UTM), zone 12
North American Datum of 1927 (NAD 27)
1,000 meter grid ticks: UTM zone 12
10,000-foot grid ticks: Wyoming State Plane Coordinate System, West zone

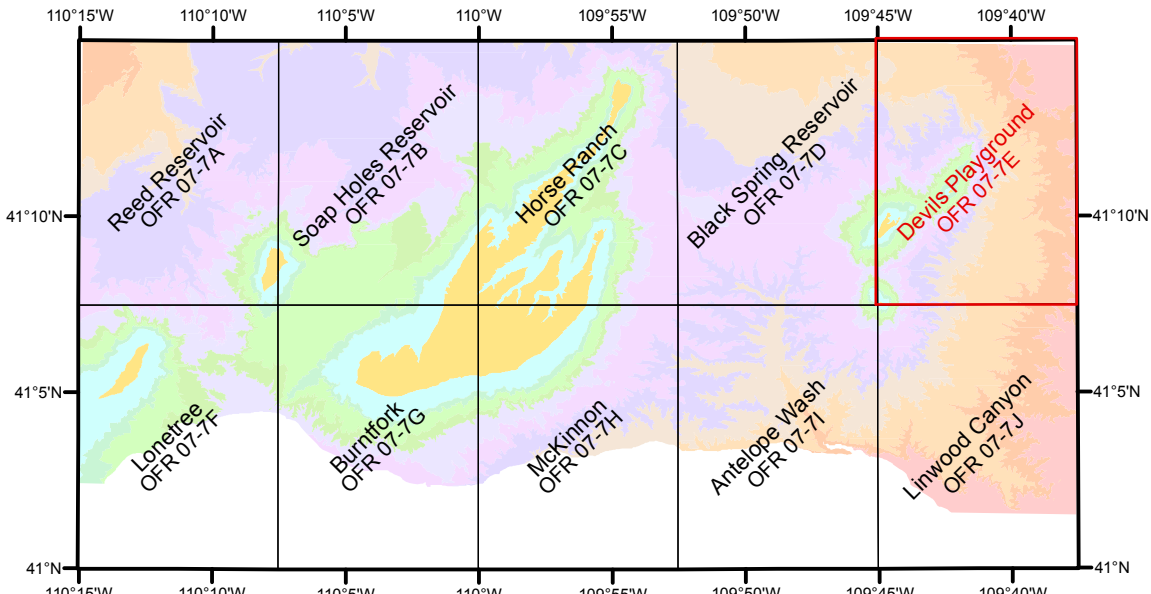
UTM GRID CONVERGENCE (GN)
1999 MAGNETIC DECLINATION (MN) AT CENTER OF SHEET
DIAGRAM IS APPROXIMATE

SCALE 1:24,000
1 0.5 0 1 Miles
1,000 0 1,000 2,000 3,000 4,000 5,000 6,000 7,000 Feet
1 0.5 0 1 Kilometers
CONTOUR INTERVAL 20 FEET
NATIONAL GEODETIC VERTICAL DATUM OF 1929

Digital cartography by Justin E. Scott and David W. Lucke
A digital version of this map is also available on CD-ROM.
Wyoming State Geological Survey
P.O. Box 1347 • Laramie, WY 82073-1347
Phone: (307) 766-2268 • Fax: (307) 766-2605
Email: wsgs_sales@wyo.edu
People with disabilities who require an alternative form of communication in order to use this publication should contact the Editor, Wyoming State Geological Survey, TTY Relay Operator 1 (800) 877-9975

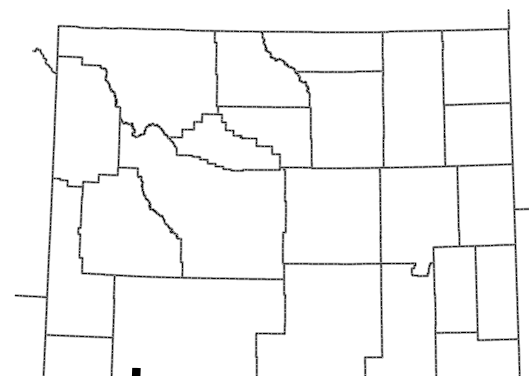


BRIDGER FORMATION PROJECT LOCATION MAP



INDEX MAP OF 1:24,000-SCALE QUADRANGLES

Number indicates Wyoming State Geological Survey Open File Report (OFR)
(1:24,000-scale digital geologic maps are included on CD for RI-57)
A 1:100,000-scale geologic map of all quadrangles above is published in Wyoming State Geological Survey Report of Investigations (RI) 57



WYOMING QUADRANGLE LOCATION

BEDROCK GEOLOGIC MAP OF DEVILS PLAYGROUND QUADRANGLE, SWEETWATER COUNTY, WYOMING

by
P.C. Murphey, L.R. Brand, J.E. Haessig and A.A. Smith
2007