



EXPLANATION

RIVERS AND CREEKS
 Rivers and creeks are displayed and labeled on the map with page locations listing flow information. Each page symbol shows the average yearly minimum, average, and average yearly maximum streamflows in cubic feet per second (cfs), and the size of the symbol indicates the relative average flow. Some of the gage locations have been moved slightly to make it clear which river/creek they are on.

Rivers **Creeks**
Gage Information
 15.0 Average yearly minimum (cfs)
 32.5 Average yearly mean flow (cfs)
 64 Average yearly maximum (cfs)

Gaged flow rates (average yearly flow)
 200.1 to 200.0 cfs
 200.1 to 1,000.0 cfs
 1,000.1 to 6,000.0 cfs

TEN LARGEST RIVERS IN WYOMING

Rank	River name	Average flow (cubic feet per second)	Drainage area (square miles)
1	Snake River	5,430.1	190.7
2	Bighorn River	3,362.2	19,667
3	Yellowstone River	3,098.0	2,619
4	Green River	2,429.0	19,350
5	North Platte River	1,818.6	22,216
6	Wind River	1,790.0	7,710
7	Shoshone River	1,190.0	2,269
8	Clark's Fork	926.1	1,154
9	Laramie River	856.6	600
10	Gallatin River	844.5	825

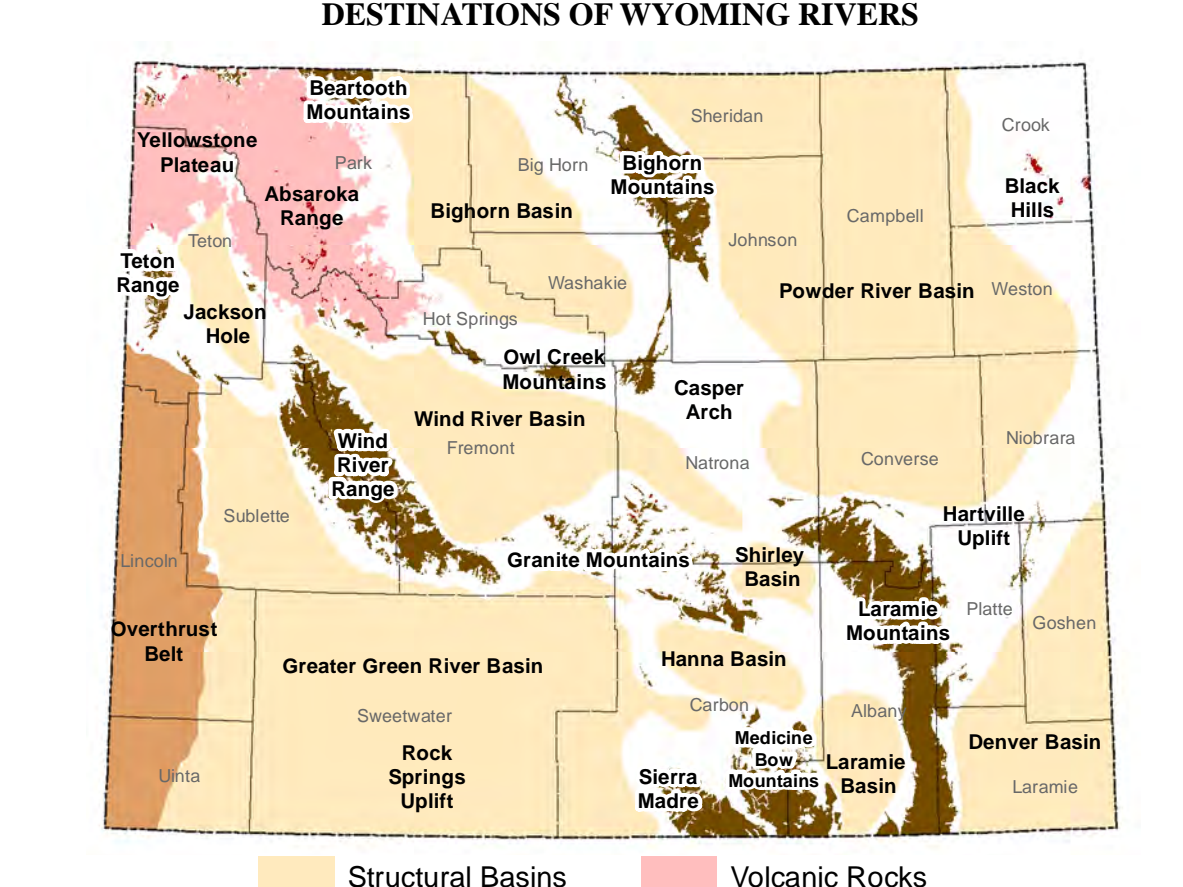
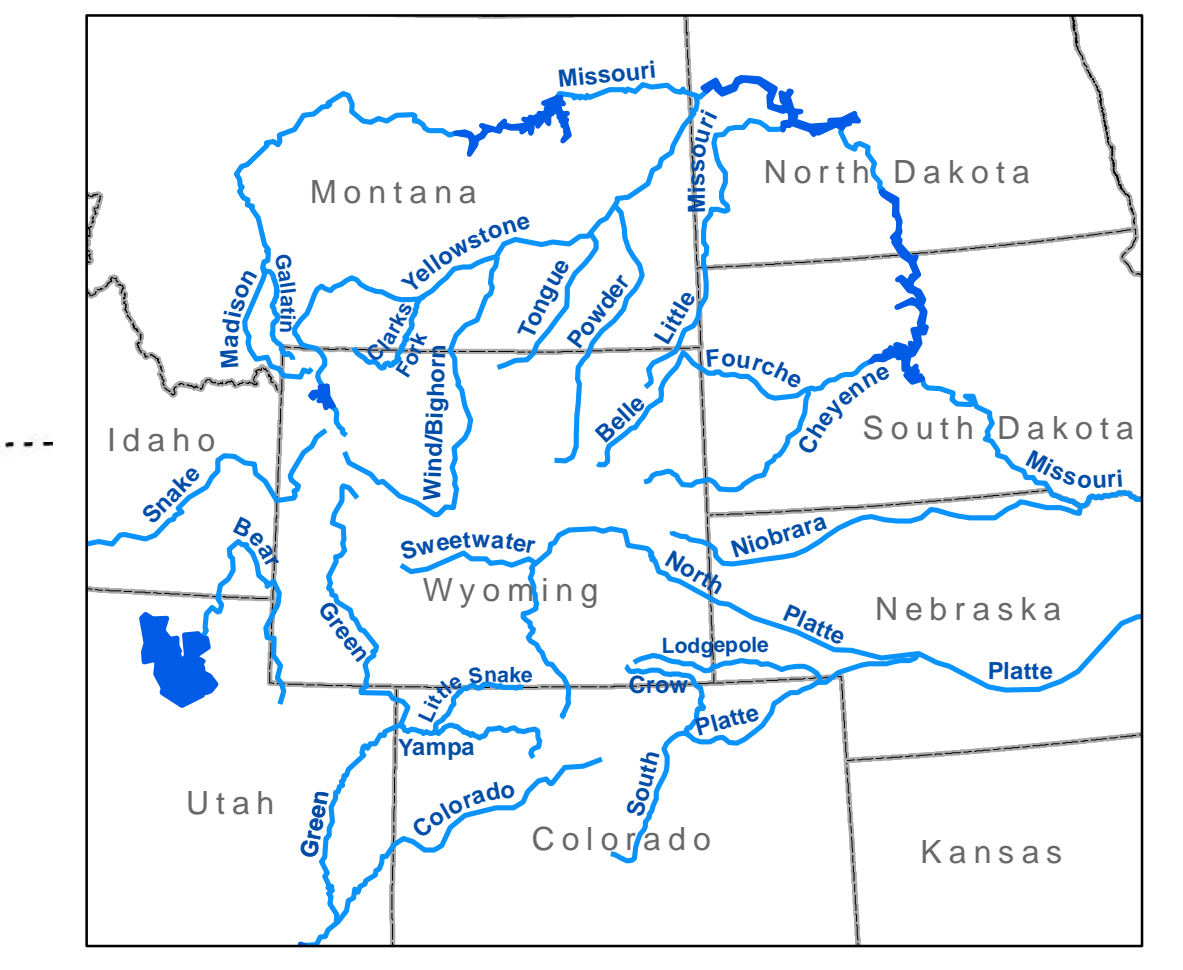
LAKES AND RESERVOIRS
 Prominent lakes and reservoirs with significant storage are named on the map with any available storage/volume data. The storage/volume information is based on maximum capacity and is listed in acre-feet under the waterbody's name. Reservoirs or natural lakes enlarged/modified by man are dark blue, and natural lakes are light blue.

TEN LARGEST LAKES/RESERVOIRS IN WYOMING

Rank	Lake/Reservoir name	Maximum volume (acre-feet)	Surface area (square miles)
1	Yellowstone Lake	12,095,264	130.7
2	Flaming Gorge Reservoir*	3,700,000	65.7
3	Jackson Lake	1,380,000	41.9
4	Forsyth Lake	1,270,000	1.7
5	Bighorn Lake*	1,150,000	17.1
6	Glendo Reservoir	1,118,700	25.5
7	Seminoe Reservoir	1,016,700	28.8
8	Pathfinder Reservoir	1,016,500	33.3
9	Beaman Reservoir	992,200	29.4
10	Buffalo Bill Reservoir	466,000	10.4

*A portion of the storage and surface area is in Utah or Montana.

OTHER SYMBOLS
GREEN RIVER Six digit hydrologic units
 Interstate Highways Federal Highways State Highways



GENERALIZED GEOLOGIC MAP OF WYOMING
 Structural Basins Volcanic Rocks
 Precambrian Bedrock Igneous Intrusions

REFERENCES

- BBS, Inc. MHW, Lidschke and Associates, Telford Corp., Demell and Allied, Inc. and Water Public Services, LLC. 2003. Wyoming State Water Plan—Wind/River Basin. October 2003. Wyoming Water Development Commission, 184 p.
- Farnas, T. 1983. Wyoming lake classification and survey. April 1983. Wyoming Department of Game and Fish, 228 p.
- Foreman Engineering, Inc., Anderson Consulting Engineers, Inc., Leonard Rice Engineers, Inc., and BSC Research and Consulting, 2001. Wyoming State Water Plan—Bear River Basin. September 2001. Wyoming Water Development Commission, 96 p.
- HKM Engineering, Inc., Lord Consulting and Water Associates, 2002. Wyoming State Water Plan—Powder/Tongue River Basin. February 2002. Wyoming Water Development Commission, 279 p.
- HKM Engineering, Inc., Lord Consulting and Water Associates, 2006. Wyoming State Water Plan—Northern Wyoming River Basin. February 2002. Wyoming Water Development Commission, 176 p.
- Phelps, L., Marston, R., Kerr, G., Svirsky, D., Vanska, M., and Faebel, R. 1996. Glacier scorch in the Wind River Range, Wyoming. America Society of Civil Engineers, 124 p.
- States West Water Resources Corp., 2001. Wyoming State Water Plan—Green River Basin, February 2001. Wyoming Water Development Commission, 173 p.
- Sorwie Engineering Inc., BSC Consulting Inc., Hensley Consulting, Randorff Engineering, Beale Engineering, Inc., Fasen Consulting and Nelson Engineering, 2003. Wyoming State Water Plan—Snake/Bear River Basin. June 2003. Wyoming Water Development Commission, 201 p.
- Telford Corp., Lidschke and Associates, Harvey Economics, and Water Rights Services, LLC. 2006. Wyoming State Water Plan—Furne River Basin May 2006. Wyoming Water Development Commission, 399 p.
- U.S. Bureau of Reclamation, 2008. Dams and reservoirs data collected 2006-2008. U.S. Bureau of Reclamation Database. <http://www.water.usbr.gov/dams/>
- U.S. Geological Survey National Water Information System. 2006. Wyoming surface-water data, collected 2007-2008. U.S. Geological Survey Web Interface. <http://waterdata.usgs.gov/wy/>
- Wyoming Official State Travel Website. Wyoming Tourism.org. Collected 2008. <http://wyomingtourism.org>

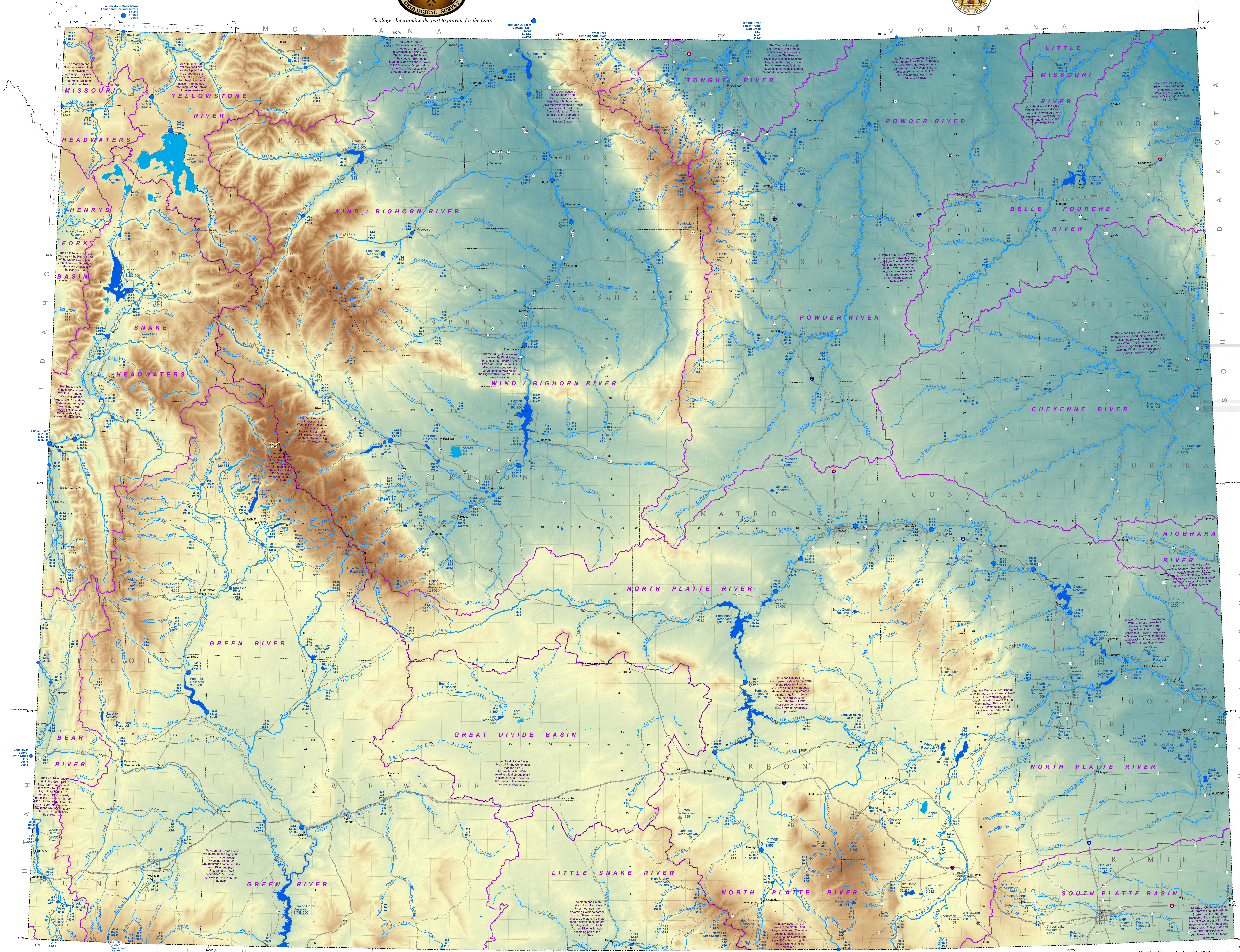
DISCLAIMERS

Users of this map are cautioned against using the data at scales different from those at which the map was compiled. Using this data at a larger scale will not provide greater accuracy and is, in fact, a misuse of the data.

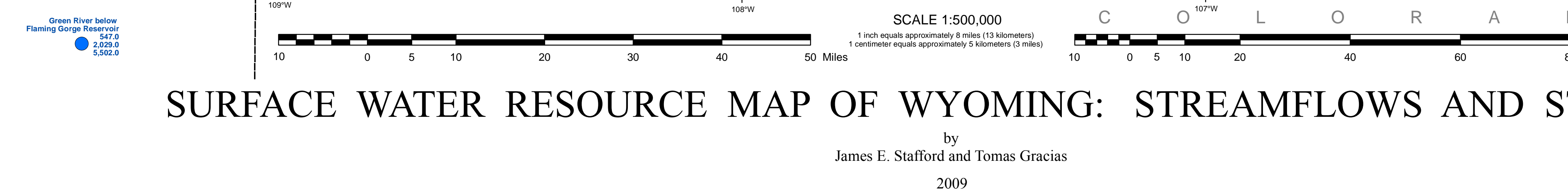
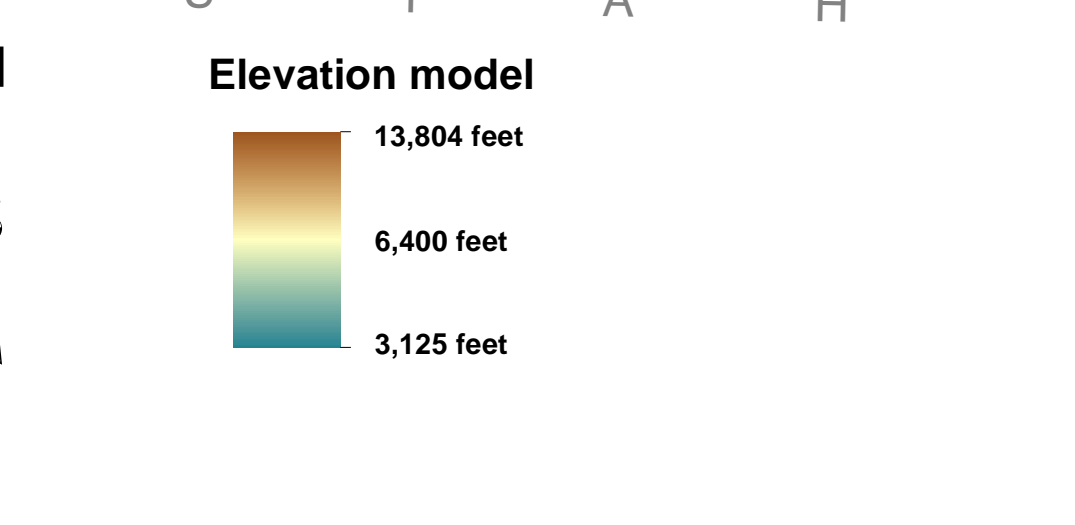
The Wyoming State Geological Survey (WSGS) and the State of Wyoming make no representation or warranty, expressed or implied, regarding the use, accuracy, or completeness of the digital data provided herein or the printed or electronic maps. The user of the digital data shall not constitute a warranty. The WSGS does not guarantee the digital data or any map printed from the data to be free of errors.

The WSGS and the State of Wyoming disclaim any responsibility or liability for interpretation made from these digital data or from any map printed from these digital data, and for any decisions based on the digital data or printed maps. The WSGS and the State of Wyoming retain all rights and/or water ownership information.

NOTICE TO USERS OF WYOMING STATE GEOLOGICAL SURVEY INFORMATION
 Most information provided by the Wyoming State Geological Survey (WSGS) is public domain, is not copyrighted, and may be used without restriction. We ask that users credit the WSGS as a country when using the information in whole or in part. This applies to published and unpublished materials in printed or electronic form. Contact the WSGS if you have any questions about using materials in preparing publications. Your cooperation is appreciated.



Map projection: Transverse Mercator
 Central Meridian: -107.5
 Standard Parallels: 41.0
 Latitude of Origin: 41.0
 Horizontal Datum: North American Datum of 1983
 Ellipsoid: Geoidetic Reference System 80



SURFACE WATER RESOURCE MAP OF WYOMING: STREAMFLOWS AND STORAGE

by
 James E. Stafford and Tomas Gracias
 2009

Digital cartography by James E. Stafford, Tomas Gracias, and Robin W. Lyons

Map editing and design by Richard W. Jones

People with disabilities who require an alternative format of communication or other accommodations should contact the Editor, Wyoming State Geological Survey, 775 State Center, Laramie, WY 82002. Email: editor@wsgs.wyo.gov

The GIS data on this map and a complete set of water data for Wyoming is available on CD.