

Wyoming State Geological Survey
Ronald C. Surdam, State Geologist
Laramie, Wyoming

Coalbed Natural Gas Activity in the Powder River Basin, Wyoming

by
Scott A. Quillinan, Nick R. Jones, Rodney H. De Bruin, and Brett N. Worman



Map Series 58
Powder River Basin
Coalbed Natural Gas Map
(Updated as of 2/24/2010)

- Explanation**
- Monitoring well
 - Producing Coal Bed Methane well
 - Permitted Coal Bed Methane well
 - Shut in Coal Bed Methane well
 - Injection well
 - Abandoned Coal Bed Methane well
 - Dry hole
 - Waiting for permit
 - Compressor

- Natural Gas Pipelines ***
- Anadarko
 - Beef Paw
 - Big Horn Gas Gathering, LLC
 - Bitter Creek
 - CMS Gas Gathering
 - CREDO
 - DCP
 - Fort Union Gas Gathering
 - Hoe Creek System
 - House Creek System
 - Kinder Morgan IGT
 - Maverick Gas
 - MSTC
 - MIGC
 - Cygas
 - QGC
 - Rim Rock
 - SG
 - TransCanada
 - UNK
 - WDR
 - Williston Basin Interstate
 - WYTEX

- Roads**
- Interstate
 - U.S. Highway
 - State Highway
 - Rail Lines

- PLSS Boundaries**
- Township and Range
 - County
 - Section

- Hydrology**
- Lakes, Ponds, and Reservoirs
 - Minor Stream
 - Moderate Stream
 - River

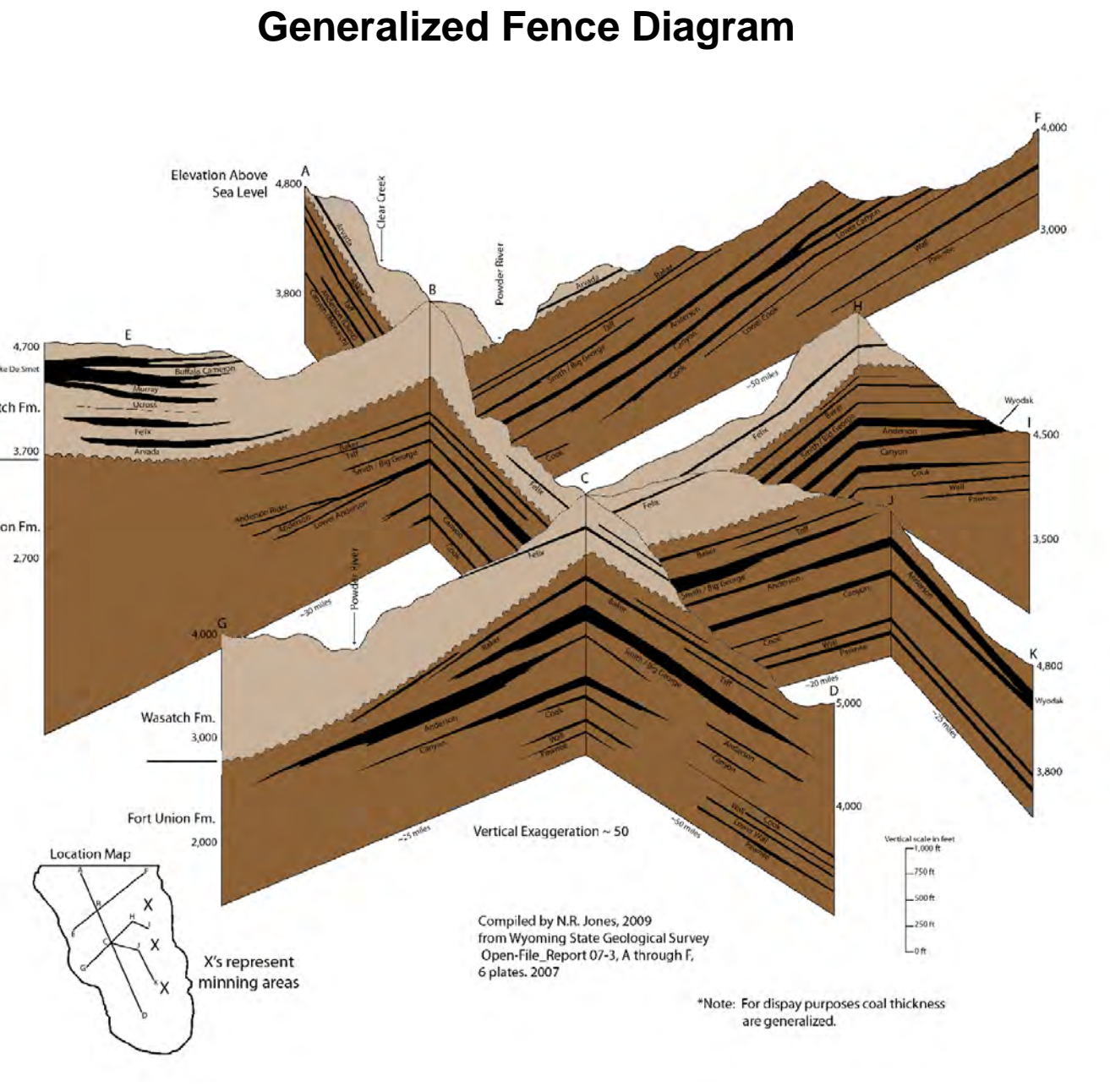
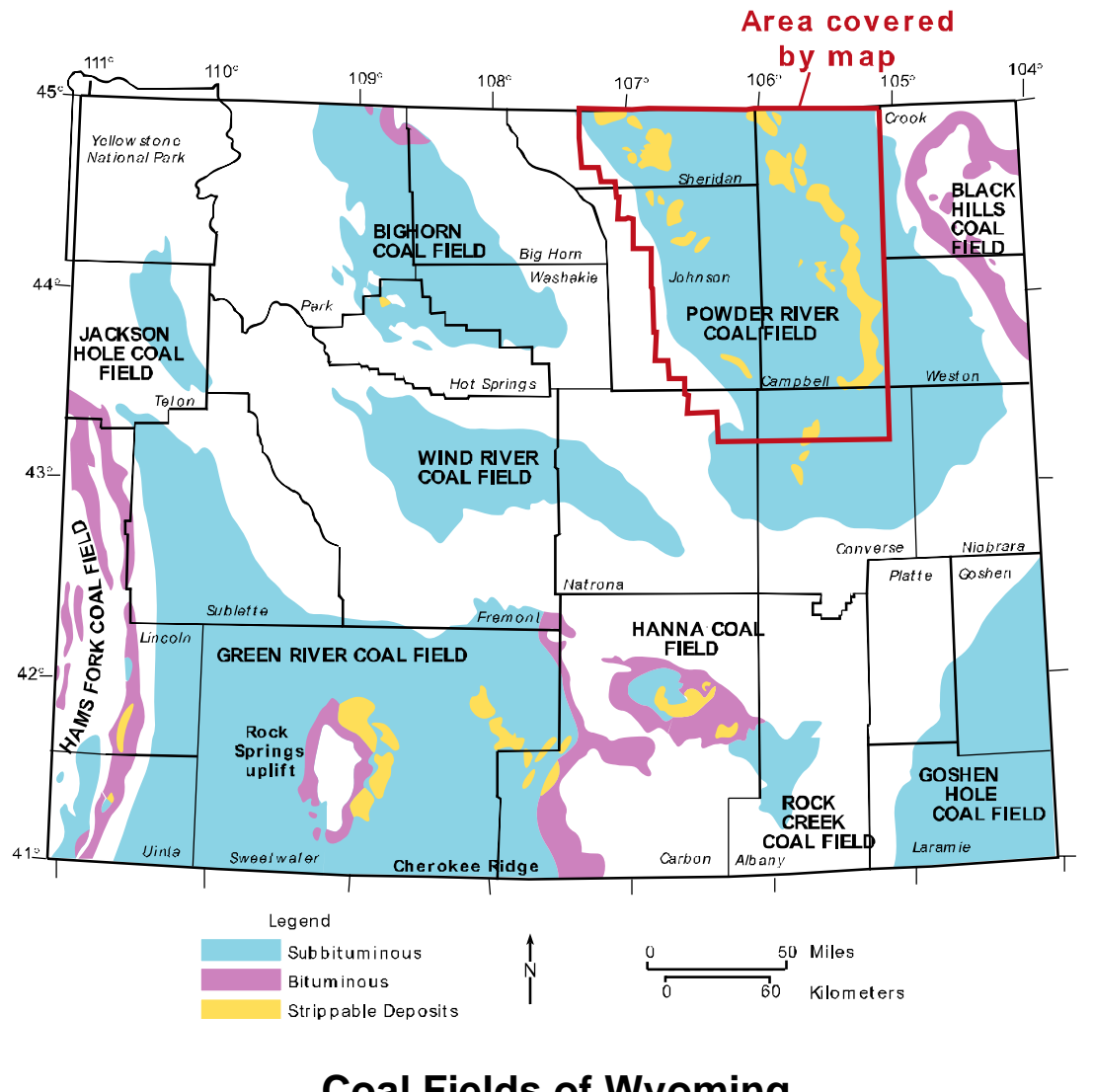
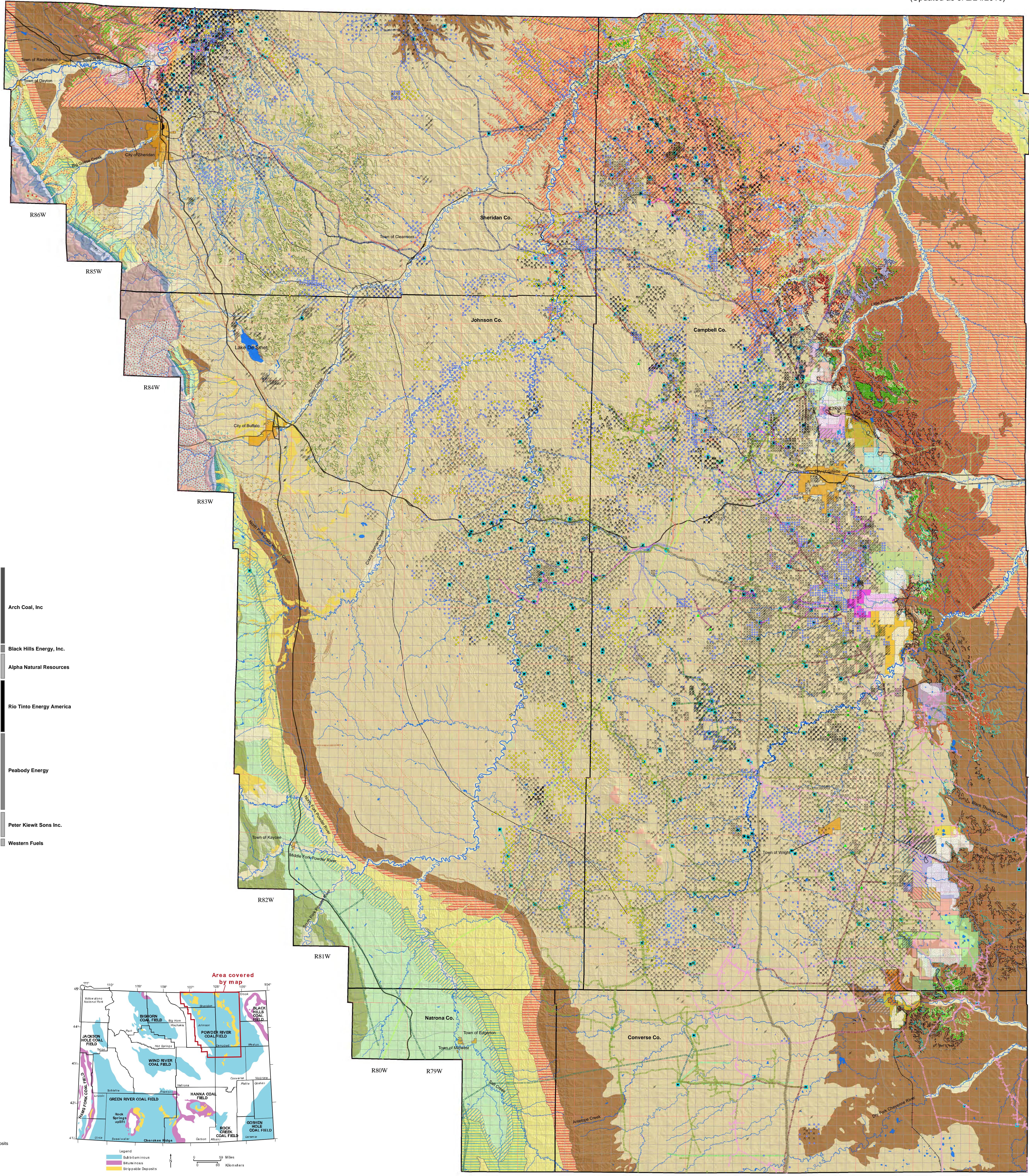
- Federal Coal Leases and LBA Tracts**
- Black Thunder
 - Coal Creek
 - Little Thunder LBA
 - North Rochelle
 - North Rochelle LBA
 - Thundercloud LBA
 - West Black Thunder LBA
 - Jacobs Ranch
 - Jacobs Ranch LBA
 - Wyodak
 - Belle Ayr
 - Eagle Butte
 - Eagle Butte LBA
 - Antelope
 - Antelope LBA
 - Corduroy Ridge Complex
 - Corduroy LBA
 - Horse Creek LBA
 - West Antelope LBA
 - Caballo
 - NARO North LBA
 - NARO South LBA
 - North Antelope/Rochelle Complex
 - North Antelope/Rochelle LBA
 - Roanoke
 - Powder River LBA
 - West Rocky Butte LBA
 - West Roundup LBA
 - Belo Exchange
 - Buckskin
 - Hay Creek LBA
 - Dry Fork

- Outcrop of Selected Coal Seams**
- Upper U/Waters Coal Seam
 - Lower U/Waters Coal Seam
 - F&K Coal Seam
 - Wyarno Coal Seam
 - Roland Coal Seam of Baker
 - Roland Coal Seam of Taff
 - Anderson Coal Seam
 - Lower Anderson Coal Seam
 - Diaz 1 Coal Seam
 - Diaz 2 Coal Seam
 - Diaz 3 Coal Seam
 - Monarch Coal Seam
 - Canyon Coal Seam
 - Canary Coal Seam
 - Miscellaneous Coal Seams
 - Wyodak Coal Zone

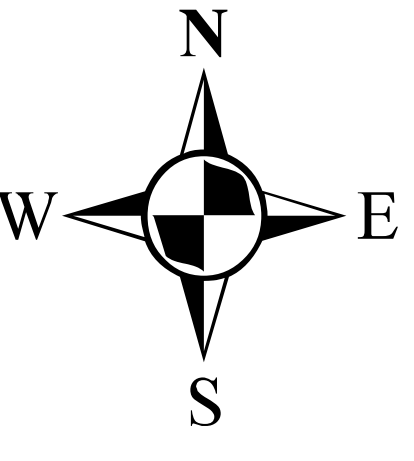
- Clinker**
- Felix Coal Seam
 - Smith Coal Seam
 - Anderson Coal Seam
 - Lower Anderson Coal Seam
 - Canyon Coal Seam
 - Wyodak Coal Zone

- Geological Structure**
- K-T boundary
 - Faults
 - Surface Contour
 - Syncline

- Geologic Map Units**
- Quaternary
 - Glacial Deposits
 - Gravel, Pediment, and Fan Deposits
 - Landslide Deposits
 - Undivided Surficial Deposits
 - Aluminum and Collium
 - White River Formation
 - Wasatch Formation: Main Body
 - Wasatch Formation: Kingsbury Conglomerate Member
 - Wasatch Formation: Monciet Member
 - Tertiary
 - Fort Union Formation
 - Fort Union Formation: Tongue River Member
 - Fort Union Formation: Lebo Member
 - Fort Union Formation: Tullock Member
 - Fort Union Formation: Tongue River and Lebo Members
 - Fort Union Formation: Lebo and Tullock Members
 - Lance Formation
 - Lance Formation: Fox Hills Sandstone, Meeteetse Formation, Bearpaw and Lewis Shales
 - Fox Hills Sandstone
 - Fox Hills Sandstone and Bearpaw Shale
 - Fox Hills Sandstone and Lewis Shale
 - Piute Shale
 - Messaville Group
 - Cody Shale
 - Frontier Formation
 - Frontier Formation and Mowry and Thermopsis Shales
 - Mowry and Thermopsis Shales
 - Cloverly and Morrison Formations
 - Cloverly, Morrison, Sundance, and Gypsum Spring Formations
 - Sundance and Gypsum Spring Formation
 - Cretaceous
 - Chugwater and Goose Egg Formations
 - Tensleep Sandstone and Amsden Formation
 - Madison Limestone and Darby Formation
 - Big Horn Dolomite, Gallatin Limestone, Grosvenor Formation, Flathead Sandstone
 - Plutonic Rocks
 - Oldest Gneiss Complex
 - Jurassic
 - Triassic
 - Pennsylvanian
 - Mississippian
 - Devonian
 - Ordovician
 - Cambrian
 - PreCambrian



Scale 1:250,000



Additional copies of this map can be obtained from:
Wyoming State Geological Survey
P.O. Box 1347, Laramie, WY 82073 - 1347
Phone: (307) 766-2288 Fax: (307) 766-2605
E-mail: sales-wgs@wyo.edu
Web: http://www.wgs.wyo.edu

* Pipelines and compressor stations are located as accurately as possible. This map may not show all pipelines and compressor stations due to incomplete and proprietary data.

- Data Sources:**
- Ed Heffern, U.S. Bureau of Land Management State Office, Cheyenne, Wyoming.
 - Fred Crockett, U.S. Bureau of Land Management, Casper, Wyoming.
 - John Harju, Wyoming State Engineers Office, Cheyenne, Wyoming.
 - Wyoming Oil & Gas Conservation Commission, Casper, Wyoming.
 - Wyoming Pipeline Authority, Casper, Wyoming.
 - Coal Resource Occurrence and Coal Development Potential Maps, 1978-1979, U.S. Geological Survey Open-File Report Series.
 - Culbertson, W.C., and Klett, M.C., 1975, Preliminary Geological Map and Coal Sections of the Jones Draw Quadrangle, Sheridan County, Wyoming; U.S. Geological Survey, Miscellaneous Field Studies Map MF-726.
 - Kanizay, S.P., 1978, Preliminary Map of the Sheridan Area, Northwestern Powder River Basin, Wyoming; U.S. Geological Survey, Miscellaneous Field Studies Map MF-1043.
 - Kanizay, S.P., Obermyer, S.L., and Cattermole, J.M., 1976, Preliminary Map of the Buffalo Area, Northwestern Powder River Basin, Wyoming; U.S. Geological Survey, Miscellaneous Field Studies Map MF-806.
 - Kent, B.H., and Berlage, L.J., 1980, Geologic Map of the Reclusa 30x60 Quadrangle, Campbell and Crook Counties, Wyoming; U.S. Geological Survey Coal Investigations Map C-81D, scale 1:100,000.
 - Mapel, W.J., and Dean, B.W., 1976, Geologic Map and Coal Sections of the Verona Quadrangle, Sheridan County, Wyoming; U.S. Geological Survey, Miscellaneous Field Studies Map MF-782.
 - Love, J.D., and Christiansen, A.C., 1985, Geologic Map of Wyoming; U.S. Geological Survey, scale 1:500,000, color, 3 sheets.