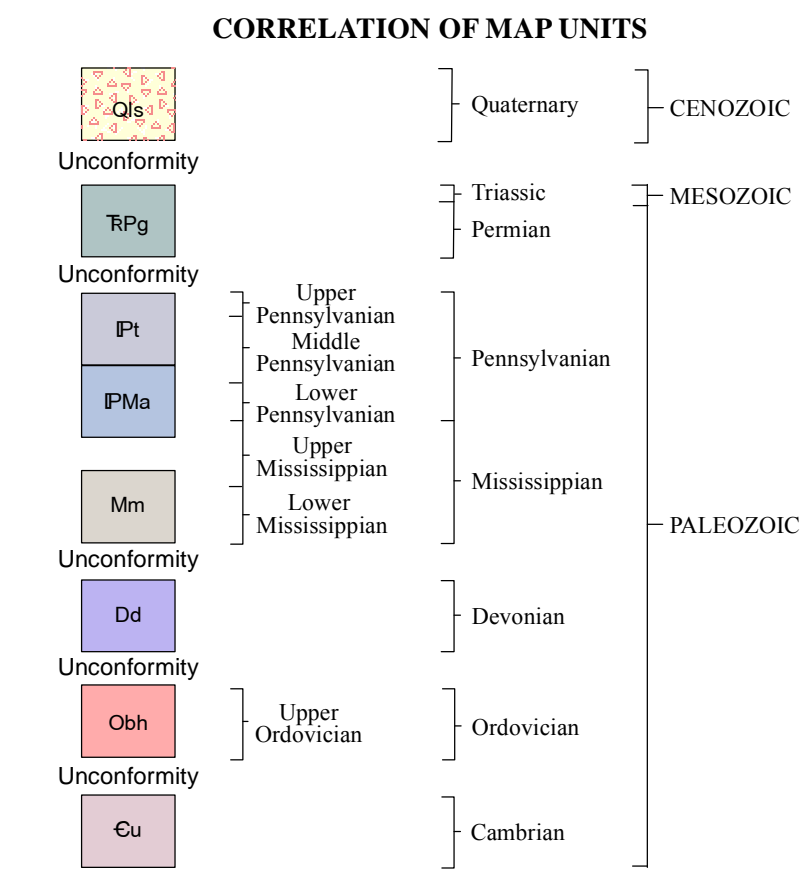


EXPLANATION



DESCRIPTION OF MAP UNITS

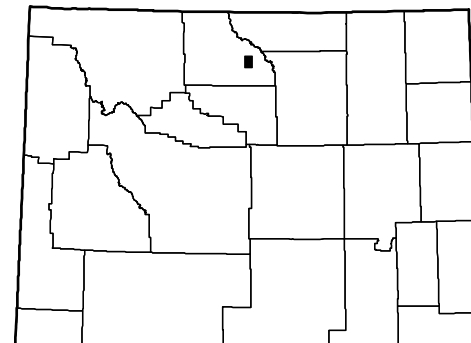
- Qs Landslide deposits—Rock debris with some identifiable bedrock; mapped occurrences are in the Amsden Formation
RPg Goose Egg Formation—Deep red calcareous and gypsiferous siltstone interbedded with pale green to purple dolomite and dolomitic limestone containing gypsum; several massive, pale gray to white gypsum beds; ranges from 250 to 300 feet (76 to 91 m) thick
Pt Tensleep Sandstone—White to light gray, very fine grained to fine-grained sandstone which is often calcareous; thick-bedded, finely laminated with cross-bedding; some units thin-bedded. Sandy dolomite beds with small lateral extent. Contact with overlying Goose Egg Formation sometimes marked by chert and limestone pebbles. Approximately 120 feet (37 m) thick
PMa Amsden Formation—Divided into three members but mapped as a single unit. Upper Ranchester Limestone Member is mainly yellow-gray-weathering dolomite and dolomitic limestone with some sandstone, shale, and gray- to purple-weathering limestone. Middle Horseshoe Shale Member is principally shale, siltstone, and mudstone that weathers red or purple. Basal Darwin Sandstone Member is pinkish white, fine- to medium-grained sandstone, well indurated, with red stain; locally present filling paleokarst features in underlying Madison Limestone. Total thickness ranges from 150 to 200 feet (46 to 61 m)
Mm Madison Limestone—Light gray to light brown, mainly limestone and dolomite with abundant crinoid fragments and other bioclastic material. Uppermost member, the Bull Ridge Member, is often stained red by sediments from the overlying Amsden Formation and contains sinkholes and solution cavities. Thickness of formation is approximately 600 feet (180 m)
Dd Darby Formation—Grayish, yellowish, and greenish dolomite, finely crystalline to micro-crystalline; interbedded with sparse dolomitic shale and siltstone; approximately 100 feet (30 m) thick
Obh Big Horn Dolomite—White to cream and light brown to dark brown, finely crystalline to sucrosic dolomite with some chert; deeply pitted on surface; thin-bedded at top, then massive unit to base of exposure. Thickness ranges from 450 to 500 feet (140 to 150 m), but only upper 200 feet (61 m) exposed in quadrangle
Cu Cambrian rocks undivided—Shown only on cross section; includes from top to base the Gallatin Limestone, 500 to 800 feet (150 to 240 m) thick (Noggle-Perrin, 1989, and Finley, 1985); Gros Ventre Formation, 420 to 500 feet (130 to 150 m) thick (Finley, 1985, and Noggle-Perrin, 1989); and Flathead Sandstone, 10 to 200 feet (3 to 61 m) thick (Noggle-Perrin, 1989)

MAP SYMBOLS

- Formation contact—Dashed where approximately located
Tar sand deposit boundary—Dashed where covered or discontinuous
Anticline axis—Dashed where approximately located
Syncline axis—Dashed where approximately located
Measured sections in Tensleep Sandstone—Graphic representations are shown in Figure 6 of Ver Ploeg and De Bruin, 1985
Line of cross section
Strike and dip of beds

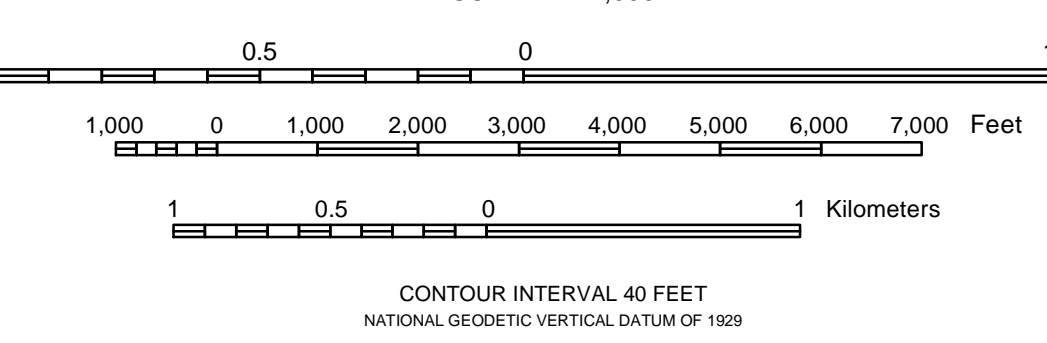
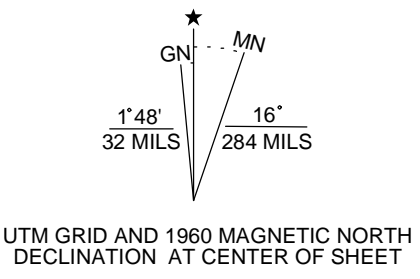
REFERENCES CITED

Finley, M.E., 1985. Geologic map of Black Mountain Quadrangle, Wyoming: Wyoming State Geological Survey Map Series 16, scale 1:24,000, color.
Noggle-Perrin, K., 1985. Geologic map of the Leavitt Reservoir Quadrangle, Wyoming: Wyoming State Geological Survey Map Series 29, scale 1:24,000, color.
Ver Ploeg, A.J., and De Bruin, R.H., 1985. Trapper Canyon tar sand deposit, Big Horn County, Wyoming: An exhumed stratigraphic oil trap. Wyoming State Geological Survey Report of Investigations No. 30, 34 p., 1- pl. map, scale 1:24,000, color.



WYOMING QUADRANGLE LOCATION

Base map from U.S. Geological Survey 1:24,000-scale topographic map of the Bush Butte, Wyoming Quadrangle, 1960.
Projection: Universal Transverse Mercator (UTM), zone 13
North American Datum of 1927 (NAD 27)
10,000-foot grid ticks: UTM, zone 13
System, East Central zone
A digital version of this map is also available on CD-ROM.
Wyoming State Geological Survey
P.O. Box 1347 - Laramie, WY 82073-1347
Phone: (307) 766-2286 - Fax: (307) 766-2605
Email: sales-wsgs@uwyo.edu



Geology mapped in 1982, revised 2008
Digital cartography by Thomas E. Ver Ploeg

Financial support provided by the U.S. Department of Energy, Laramie Energy Technology Center, under contract DE-AS20-82LC 10916. The views and conclusions contained in this document are those of the authors and should not be interpreted as necessarily representing the official policies, either expressed or implied, of the U.S. Government.

DISCLAIMERS

Users of these maps are cautioned against using the data at scales different from those at which the maps were compiled. Using this data at a larger scale will not provide greater accuracy and is, in fact, a misuse of the data.
The Wyoming State Geological Survey (WSGS) and the State of Wyoming make no representation or warranty, expressed or implied, regarding the use, accuracy, or completeness of the data presented herein, or of a map printed from these data. The act of distribution shall not constitute such a warranty. The WSGS does not guarantee the digital data or any map printed from the data to be free of errors or inaccuracies.

The WSGS and the State of Wyoming disclaim any responsibility or liability for interpretations made from these digital data or from any map printed from these digital data, and for any decisions based on the digital data or printed maps. The WSGS and the State of Wyoming retain and do not waive sovereign immunity.

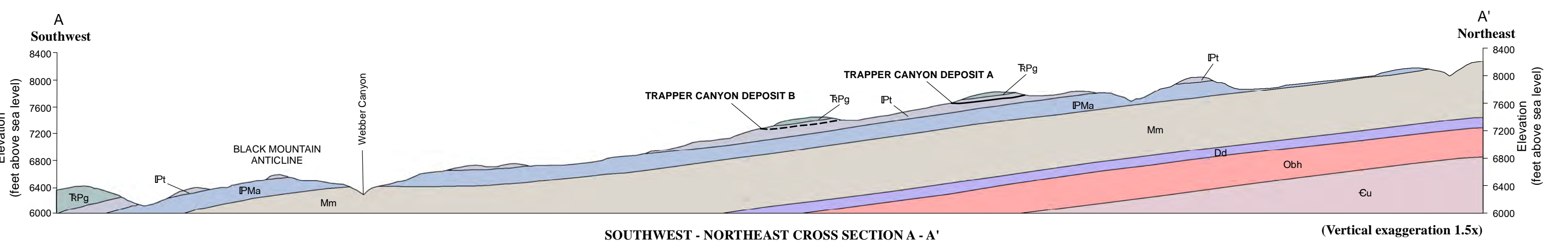
The use of or reference to trademarks, trade names, or other product or company names in this publication is for descriptive or informational purposes only, or is pursuant to licensing agreements between the WSGS or State of Wyoming and software or hardware developers/vendors, and does not imply endorsement of those products by the WSGS or the State of Wyoming.

NOTICE TO USERS OF INFORMATION FROM THE WYOMING STATE GEOLOGICAL SURVEY

The WSGS encourages the fair use of its material. We request that credit be expressly given to the "Wyoming State Geological Survey" when citing information from this publication. Please contact the WSGS at (307) 766-2286, ext. 224, or by email at wsgs.sales@wyo.gov if you have questions about citing materials, preparing acknowledgments, or extensive use of this material. We appreciate your cooperation.

Individuals with disabilities who require an alternative form of this publication should contact the WSGS. For the TTY relay operator call 800-877-9975.

For more information about the WSGS or to order publications and maps, go to www.wsgs.uwyo.edu, call (307) 766-2286, ext. 224, or email wsgs.sales@wyo.gov.



GEOLOGIC MAP OF THE BUSH BUTTE QUADRANGLE, BIG HORN COUNTY, WYOMING

by
Alan J. Ver Ploeg and Rodney H. De Bruin
2013