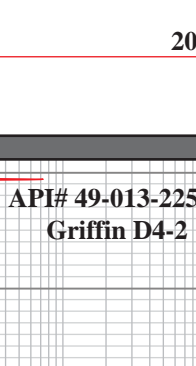
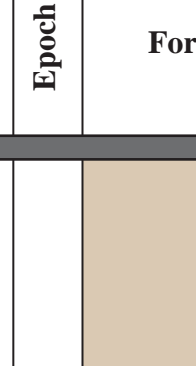
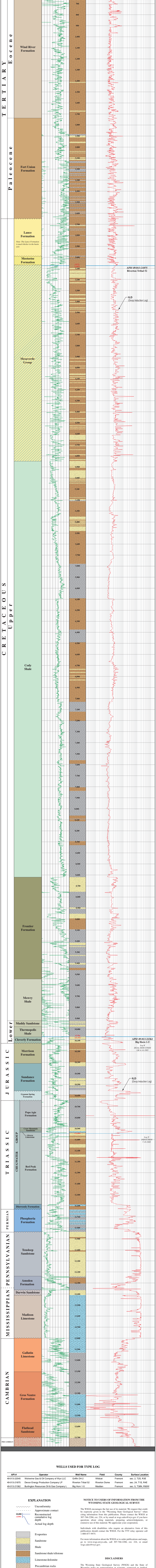


# GEOLOGIC STORAGE ASSESSMENT OF CARBON DIOXIDE (CO<sub>2</sub>) IN THE LARAMIDE BASINS OF WYOMING



## TYPE LOG WIND RIVER BASIN



### WELLS USED FOR TYPE LOG

API #	Operator	Well Name	Field	County	Surface Location
49-013-22545	Wolverine Gas & Oil Company of Wyo LLC	Griffin D4-2	Wildcat	Fremont	sec. 2, T2S, R3E
49-013-21875	Devon Energy Gas Company LP	Riverton Tribal 52	Wildcat	Fremont	sec. 24, T1S, R4E
49-013-21362	Burlington Resources Oil & Gas Company L	Big Horn 1-5	Madden	Fremont	sec. 5, T38N, R90W

### EXPLANATION

- Unconformity
- Approximate contact
- Reconstructed cumulative log depth
- Actual log depth
- Evaporites
- Sandstone
- Shale
- Sandstone/shale/siltstone
- Limestone/dolomite
- Precambrian rocks

Note: The lithologies shown are general and meant to depict average lithologic conditions and are not based on petrophysical analysis of cores or logs.

### NOTICE TO USERS OF INFORMATION FROM THE WYOMING STATE GEOLOGICAL SURVEY

The WSGS encourages the fair use of its material. We request that credit be expressly given to the "Wyoming State Geological Survey" when citing information from this publication. Please contact the WSGS at 307-766-2286, ext. 224, or by email at wsgs.sales@wyo.gov if you have questions about citing materials, preparing acknowledgments, or extensive use of this material. We appreciate your cooperation.

Individuals with disabilities who require an alternative form of this publication should contact the WSGS. For the TTY relay operator call 1-800-877-9975.

For more information about the WSGS or to order publications and maps, go to [www.wsgs.uwyo.edu](http://www.wsgs.uwyo.edu), call 307-766-2286, ext. 224, or email [wsgs.sales@wyo.gov](mailto:wsgs.sales@wyo.gov).

### DISCLAIMERS

The Wyoming State Geological Survey (WSGS) and the State of Wyoming make no representation or warranty, expressed or implied, regarding the use, accuracy, or completeness of the data presented herein, or of a chart printed from these data. The act of distribution shall not constitute such a warranty. The WSGS and the State of Wyoming retain and do not waive sovereign immunity.

The WSGS and the State of Wyoming disclaim any responsibility or liability for interpretations made from these digital data or from any chart printed from these digital data, and for any decisions based on the digital data or printed charts. The WSGS and the State of Wyoming retain and do not waive sovereign immunity.

### REFERENCES

- Love, J.D., Christiansen, A.C., and Ver Plog, A.J., comps., 1993, Stratigraphic chart showing Phanerozoic nomenclature for the State of Wyoming: Geological Survey of Wyoming [Wyoming State Geological Survey] Map Series MS-41.
- Wyoming Oil and Gas Conservation Commission, 2012, [digital log data], at <http://wgcc.state.wy.us>.

The use of or reference to trademarks, trade names, or other product or company names in this publication is for descriptive or informational purposes only, and is pursuant to licensing agreements between the WSGS or State of Wyoming and software or hardware developers/vendors, and does not imply endorsement of those products by the WSGS or the State of Wyoming.

Layout and design by James R. Rodgers  
 Edited by Suzanne C. Luhr