

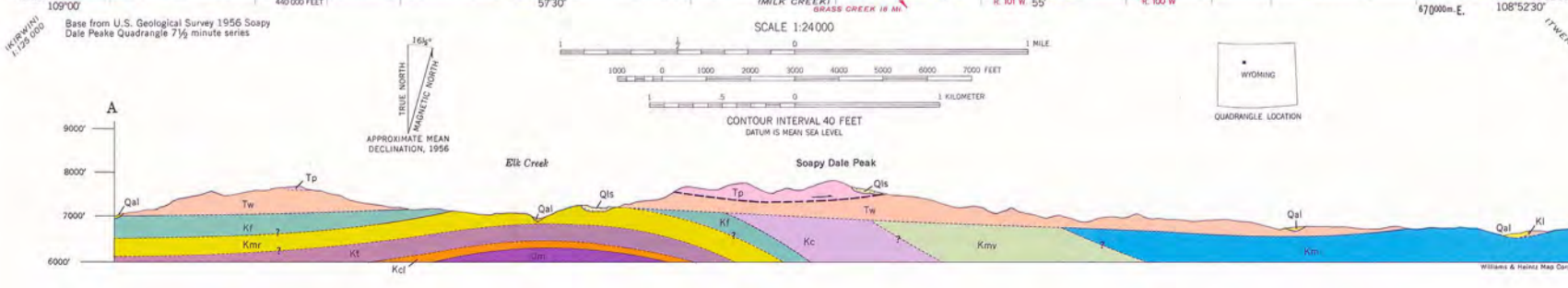
EXPLANATION

- QUATERNARY**
 - Recent
 - Qls
Landslide Deposits
 - Qal
Alluvium
Unconsolidated deposits of silt, sand, gravel, and cobbles along stream valleys. Includes alluvial fans.
 - Upper Eocene? or Lower Oligocene?
 - Tw
Wiggins Formation
Greenish-gray andesitic sandstones and breccias with intercalated tuffs and green andesitic siltstones and grits. Light-gray elongate and green andesitic cobble conglomerate at base; 250+ feet thick.
 - Middle Eocene
 - UNCONFORMITY
 - Tp
Pitchfork Formation
Greenish-gray, light olive gray, and yellowish gray andesitic sandstones and buffaceous siltstones with interbedded lenticular andesitic conglomerates. May include concealed brown carbonaceous shale of the Taimson Formation at the base; 850+ feet thick.
 - Lower Eocene
 - Tw
Willow Formation
Maroon and pale yellowish-gray interbedded siltstone, clay, sandstone, and arkosic sandstone; local lenses of quartzite conglomerate at or near base.
- TERTIARY**
 - UNCONFORMITY
 - Kl
Lance Formation
Light-gray to pale buff-gray fine- to medium-grained massive cliff-forming sandstone interbedded with shale and siltstone that form short slopes.
 - Km
Meteetan Formation
Light-gray and gray lenticular thin-bedded intercalated siltstone, clay, shale, bentonite, and thin coal lenses.
 - Kmv
Menavende Formation
Light-gray to light buff-gray fine- to medium-grained cross-bedded sandstone; forms ledges, slopes, and cliffs; some shale, clay, and coal in lower part; massive sandstone at base.
 - Kc
Cody Shale
Gray to light-gray shale and interbedded fine-grained thinly laminated friable sandstone; sandstone increases upwards and forms buff-gray and light grayish-buff cliffs at top.
 - Kf
Frontier Formation
Sandy shale, shale, massive sandstone and bentonite.
 - Kmr
Mowry Shale
Gray siliceous shale containing fish scales, several thin beds of bentonite.
 - Kt
Thermopolis Shale
Dark gray to black shale with a few thin beds of sandstone, few thin beds of bentonite in upper part.
 - Kcl
Cloverly Formation
Light gray to yellowish-buff, massive, ripple-marked, hard, sandstone; gray, sandy shale below.
- JURASSIC**
 - Upper Jurassic
 - Jm
Morrison Formation
Purple, red, and gray, sandy shale with thin beds and concretions of nodular, siliceous limestone.

IGNEOUS ROCKS

X
Small dark reddish-brown to dark gray basaltic andesite and breccia plugs up to 250 feet, maximum outcrop dimension. Some appear to be erosional remnants that have been transported along planes of local detachment faulting. Age is at least post Middle Eocene.

- Contact
Dashed where approximately located, dotted where concealed.
- Fault
U, Uplithrown; D, downthrown
- Detachment Fault
Sawtooth on detached mass. Dashed where approximately located, short dash where inferred.
- Strike and dip of beds
- Axis of anticline
- Axis of syncline
- Well
- Dry hole
- Coal prospect



GEOLOGIC MAP OF THE SOOPY DALE PEAK QUADRANGLE, HOT SPRINGS COUNTY, WYOMING

By
William H. Wilson
1970
THE GEOLOGICAL SURVEY OF WYOMING