

GEOLOGICAL SURVEY OF WYOMING
MINERAL REPORT # 80-1

GEOLOGICAL SURVEY OF WYOMING

Aug. 25, 1980

Mother Lode Gold Deposit, Albany County

The Mother Lode gold deposit is owned by Mr. W. D. Goodwin of Mother Lode Exploration, 26929 Stratford, Highland, CA 92346. The deposit is developed by an exploration pit approximately 100 by 50 feet in alluvium lying on the northern bank of the Middle Fork of the Little Laramie River (center of the SE/4 section 1, T. 15 N., R. 79 W.).

Mineralization occurs as pyritized quartz and as pyritic amphibolite (?) tectonite boulders in alluvial stream bank deposits. The pyritized and limonitic stained rocks are concentrated in the immediate vicinity of the prospect pit. The mineralized material was found to extend only a few hundred feet upslope from the pit suggesting that the material originated from a lode deposit at depth in this general area.

Assays were not run, however, it is likely that the pyrite contains trace amounts of gold and possibly platinum as do similar rocks in the Centennial Ridge district, and at the New Rambler mine. In these two areas, gold and platinum mineralization is intimately associated with iron sulfides along shear zones.

Signed,



W. Dan Hausel
Staff Minerals Geologist
Geological Survey of Wyoming



WYOMING ANALYTICAL LABORATORIES, INC.

Box 638 • 605 South Adams

(307) 742-7935

LARAMIE, WYOMING 82070

Dan Hausel
Wyoming Geological Survey
Box 3008, Univ. Sta.
Laramie, WY 80434

Request No. 1349-063
Date: 13 October 1982

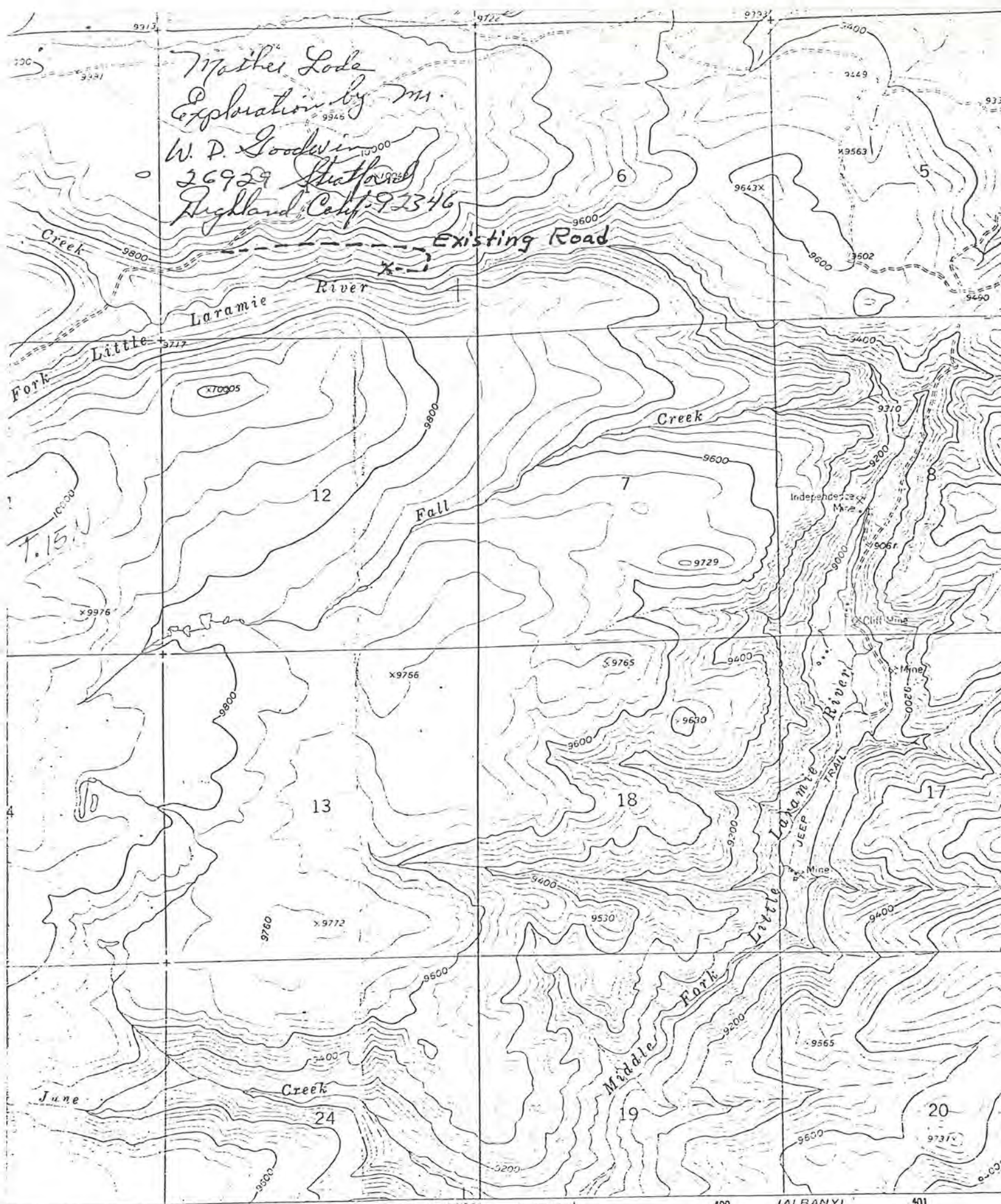
REPORT OF ANALYSIS

selected sample containing massive pyrite

Customer ID	BP-1, Portland Mine	CR-3-13-14, Mother Lode 9860	ES-1, Oriole Mine	ES6-8, Tenderfoot Mine	HP-18, Fletcher Park	
Lab No.	9859	9860	9861	9862	9863	
Gold	oz/ton	<0.01	<0.01	--	<0.01	<0.01
Copper	%	2.75	--	1.11	--	0.135
Platinum	oz/ton	--	<0.01	--	--	--
Silver	oz/ton	--	--	--	--	<0.01
Zinc	mg/L	81.4	--	--	--	46.9

Gene F. Hayes
Gene F. Hayes
Laboratory Director

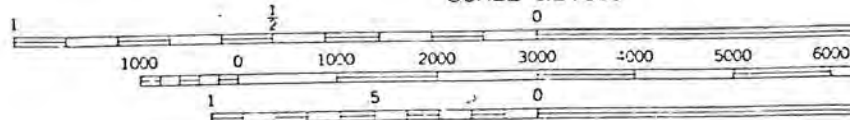
Mather Lode
 Exploration by M.
 W. D. Goodwin
 26929 Shafter
 Highland, Calif. 92346



397 210 000 FEET R. 79 W. 12'30" R. 78 W. 400 401

ALBANY 4766 11 NW
 SCALE 1:24 000

by the Geological Survey
 the Interior program
 souri River Basin



CONTOUR INTERVAL 40 FEET
 DOTTED LINES REPRESENT 20 FOOT CONTOURS
 DATUM IS MEAN SEA LEVEL

UTM GRID AND 1961 MAGNETIC NORTH
 DECLINATION AT CENTER OF SHEET

THIS MAP COMPLIES WITH NATIONAL MAP ACCURACY STANDARD
 FOR SALE BY U. S. GEOLOGICAL SURVEY, DENVER, COLORADO 80225 OR WA
 A FOLDER DESCRIBING TOPOGRAPHIC MAPS AND SYMBOLS IS AVAILABLE

from aerial
 Datum
 State system,
 and field lines where
 information is unchecked