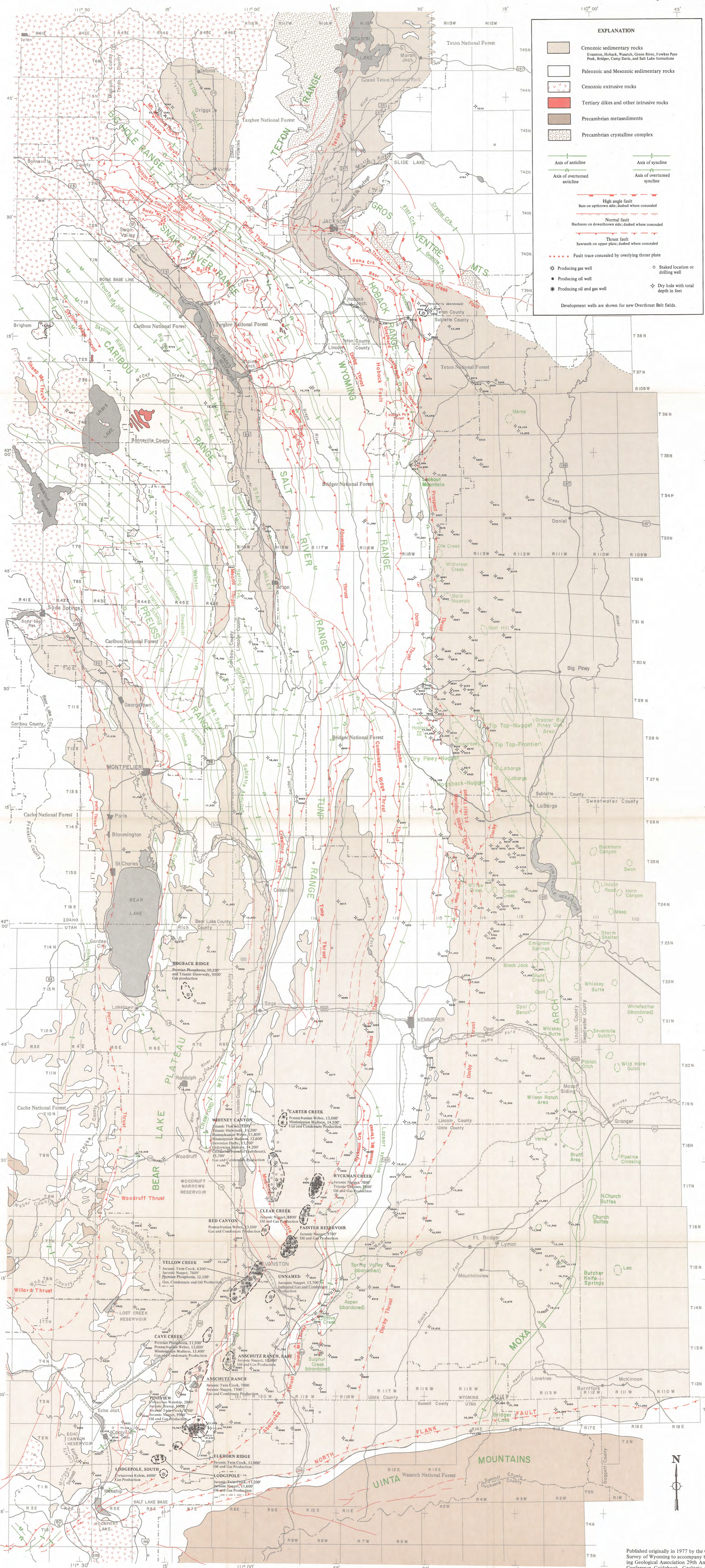


MS-8A



| EXPLANATION | |
|-------------|--|
| | Cenozoic sedimentary rocks Evanston, Hoback, Washach, Green River, Fowkes Pass, Peak, Bridger, Camp Davis, and Salt Lake formations |
| | Paleozoic and Mesozoic sedimentary rocks |
| | Cenozoic extrusive rocks |
| | Tertiary dikes and other intrusive rocks |
| | Precambrian metasediments |
| | Precambrian crystalline complex |
| | Axis of anticline |
| | Axis of syncline |
| | Axis of overturned anticline |
| | Axis of overturned syncline |
| | High angle fault Bars on upthrown side; dashed where concealed |
| | Normal fault Hachures on downthrown side; dashed where concealed |
| | Thrust fault Sawtooth on upper plate; dashed where concealed |
| | Fault trace concealed by overlying thrust plate |
| | Producing gas well |
| | Staked location or drilling well |
| | Producing oil well |
| | Producing oil and gas well |
| | Dry hole with total depth in feet |
| | Development wells are shown for new Overthrust Belt fields. |

**TECTONIC MAP OF THE OVERTHRUST BELT
WESTERN WYOMING, SOUTHEASTERN IDAHO AND NORTHEASTERN UTAH
SHOWING CURRENT OIL AND GAS DRILLING AND DEVELOPMENT**
Compiled by D.L. Blackstone, Jr.

Published originally in 1977 by the Geological Survey of Wyoming to accompany the Wyoming Geological Association 29th Annual Field Conference Guidebook. Geologic editing by Alan J. Ver Ploeg and David R. Lagson. Revised 1978, 1979 by D.L. Blackstone, Jr. Cartography by Fred H. Porter and Phyllis A. Ranz. Oil and gas field and well data, compiled by Alan J. Ver Ploeg, updated through July 31, 1980.

Scale 1:316,800

1980

M 58A 1980

The Geological Survey of Wyoming
Laramie, Wyoming
August 1980