

THE RAMBLER GROUP COPPER PROSPECT, SILVER CROWN DISTRICT

by W. Dan Hausel, November 13, 1981

Location

The Rambler Prospect (as it is called in Geological Survey of Wyoming Bulletin #50, p. 56) is located in Curt Gowdy State Park between Granite Springs and Crystal Lake reservoirs on the western edge of the Silver Crown District. The Prospect lies adjacent to the section line between sections 22 and 23, and more exactly in the E/2 E/2 SE/4 NE/4 of section 22, T. 14N., R. 70W. (see attached map).

Development

The Prospect was developed by a verticle shaft. The shaft was intersected by a adit located to the east of the shaft. The total amount of workings is estimated to be less than 100 feet. Hagner (1942) reported that the shaft reached a depth of 40 to 50 feet. Where the shaft intersected the adit, the shaft was offset to the east and at this point it was developed to about 20 feet depth.

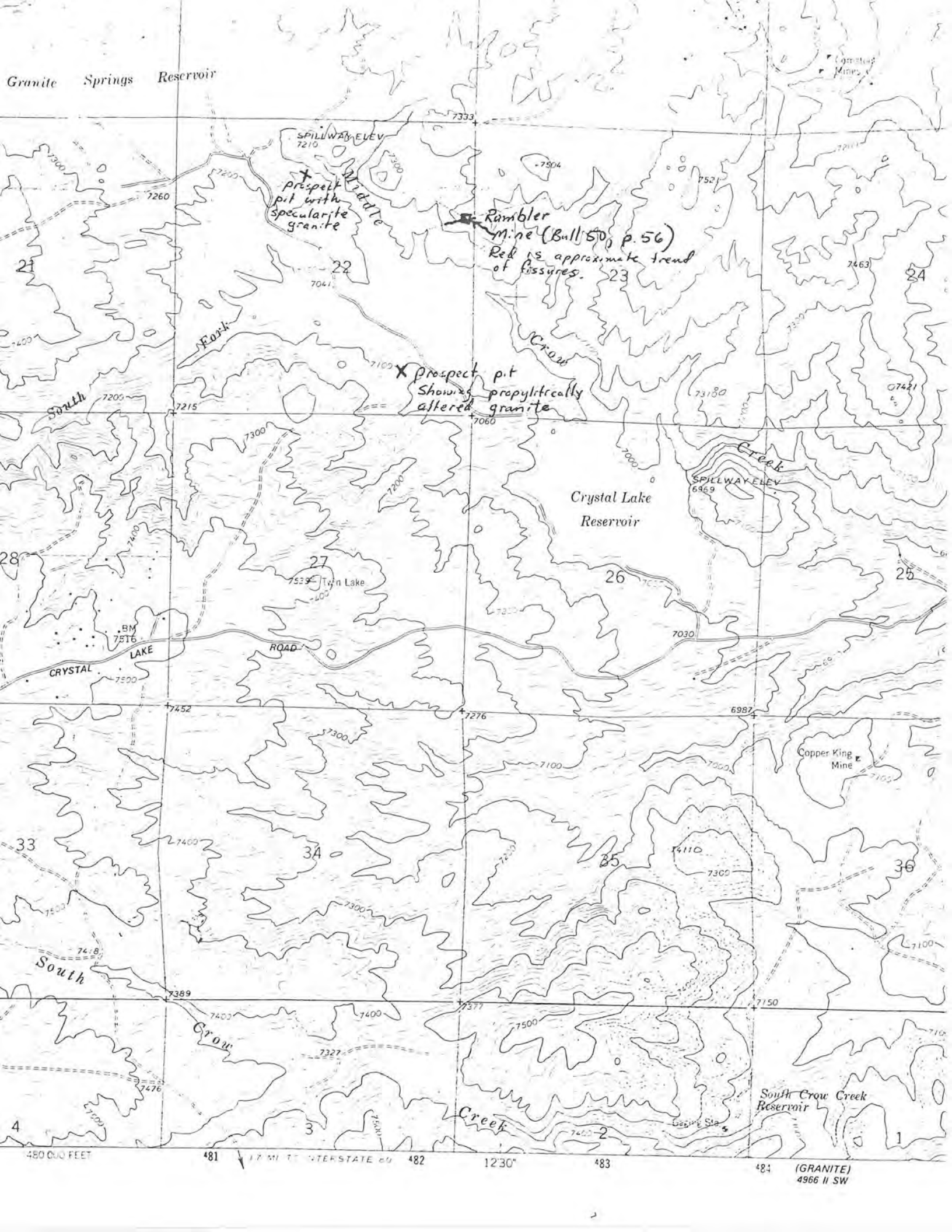
Mineralization

The property was developed on a gossan-stained granite along a fissure which trends N75° E and changes directions to N60° W on the east side of the property. (Hagner, 1942) These two trends may represent an intersection of two separate fissures to form an ore shoot. However, during the examination of the property, due to the late time of day, darkness overtook myself and Jay Roberts and we were unable to make a thorough examination.

Several rock specimens were collected from the mine tailings. The host rock is a coarse-grained granite containing 70 to 75% pink K-spar, 8 to 10% quartz, and 15 to 20% black hornblende. Mineralized specimens show varrying degrees of propylitic alteration in which the mafic minerals have altered to epidote, minor chlorite and calcite. Another small prospect in the SE/4 Section 22 shows similar propylitic alteration, but no mineralization.

Primary ore minerals include pyrite, chalcopyrite, and minor sphalerite (samples SC-5, 6 and 7). Secondary minerals include light-blue and green hydrated copper silicates along and near the fissure. Oxidation of the deposit was quite restricted as suggested by the presence of primary pyrite in outcrop, limited gossan, and rare boxworks.

Granite Springs Reservoir



SPILLWAY ELEV 7210  
Prospect pit with specularite granite

Rambler Mine (Bull 50, p. 56)  
Red is approximate trend of fissures.

Prospect pit showing altered propylitically granite

Crystal Lake Reservoir

SPILLWAY ELEV 6969

Copper King Mine

South Crow Creek Reservoir

480 000 FEET

481

482

1230'

483

484

(GRANITE)  
4966 II SW



# WYOMING ANALYTICAL LABORATORIES, INC.

Box 638 • 605 South Adams

(307) 742-7995

LARAMIE, WYOMING 82070

Dan Hausel  
Wyoming Geological Survey  
University of Wyoming  
Laramie, WY 82071

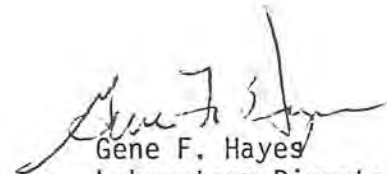
Request No. 986-063  
Date: 27 November 1981

## REPORT OF ANALYSIS

Customer ID.	SC-5	SC-8
Lab No.	7513	7514

---

Copper	mg/kg	2840 ( $2.84 \times 10^3$ )	--
Gold	oz/ton	--	<0.01

  
Gene F. Hayes  
Laboratory Director