

ASSAY REPORT OF SELECTED MINE DUMP SAMPLE,
MOTHER LODE MASSIVE SULFIDE PROSPECT
ALBANY COUNTY, WYOMING

by
W. Dan Hausel
1982

The Mother Lode prospect is located in section 1, T15N, R79W adjacent to the Centennial Ridge District (Figure 1). The prospect is developed by a small pit in alluvial and eluvial (?) sulfide stained rock on the Middle Fork of the Little Laramie River. The mineralized rock occurs as pyritized quartz and amphibolite which occur as alluvial boulders and recent stream bank deposits. The pyritized rock extends a few hundred feet upslope from the prospect pit. A selected sample (#CR-3-13-14) of pyritized amphibolite was assayed producing no detectable gold or platinum (Figure 2).

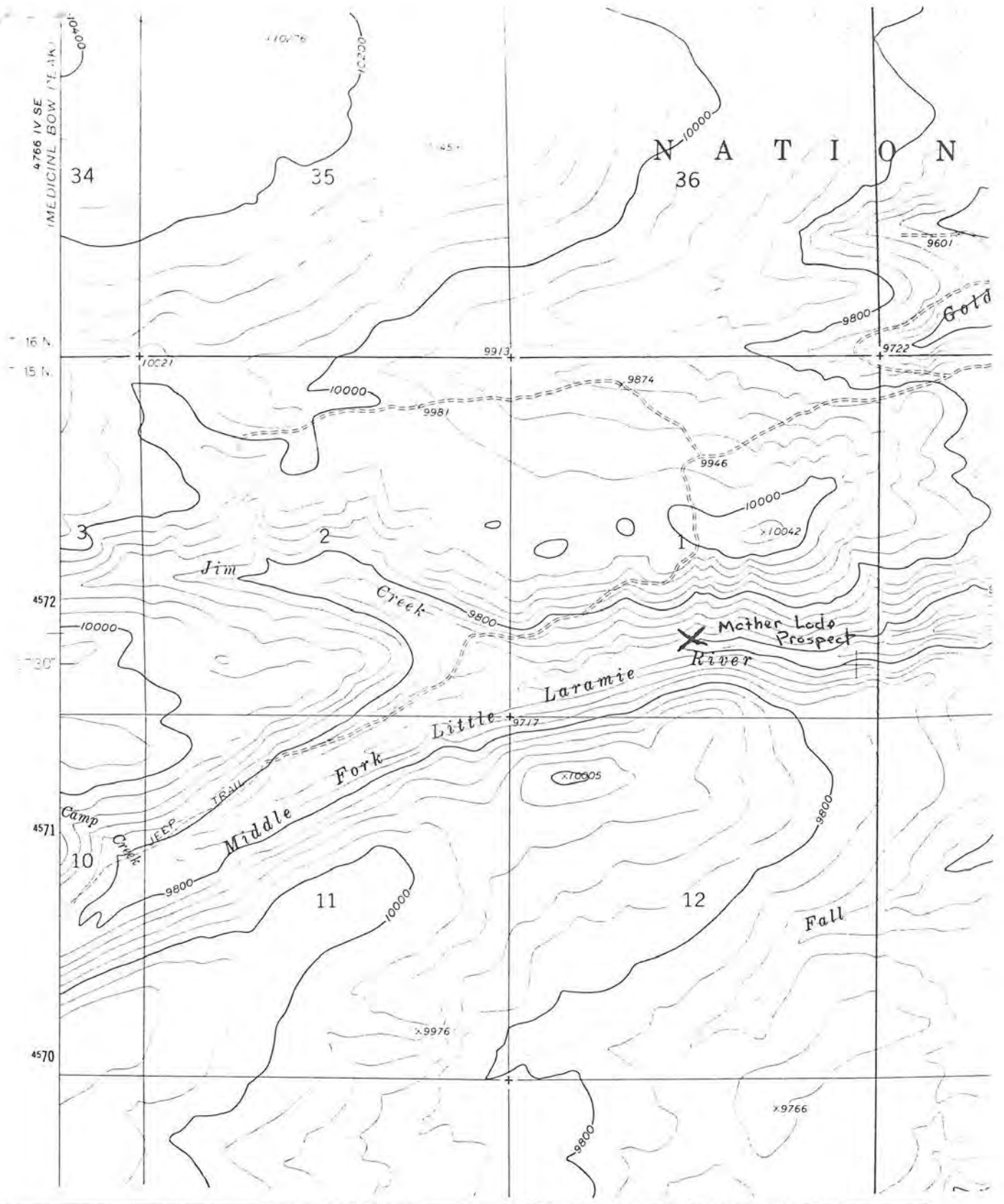


Figure 1. Location map of the Mother Lode prospect (base map U.S. Geological Survey Centennial 7½-minute quadrangle).



WYOMING ANALYTICAL LABORATORIES, INC.

Box 638 • 605 South Adams

(307) 742-7995

LARAMIE, WYOMING 82070

Dan Hausel
Wyoming Geological Survey
Box 3008, Univ. Sta.
Laramie, WY 80434

Request No. 1349-063
Date: 13 October 1982

REPORT OF ANALYSIS

Customer ID	BP-1, Portland Mine	(1-15N-79W) CR-3-13-14, Mother Lode 9860	ES-1, Oriole Mine 9861	ES6-8, Tender-foot Mine 9862	HP-18, Fletcher Park 9863
Lab No.	9859				
Gold	oz/ton	<0.01	--	<0.01	<0.01
Copper	%	2.75	1.11	--	0.135
Platinum	oz/ton	--	--	--	--
Silver	oz/ton	--	--	--	<0.01
Zinc	mg/L	81.4	--	--	46.9

Sample CR-3-13-14 massive pyrite sample with minor graphite and quartz veinlets.
Altered amphibolite.

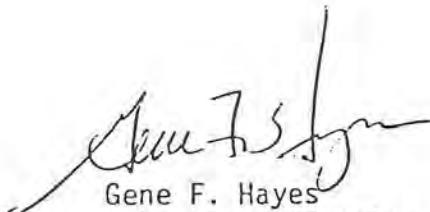

Gene F. Hayes
Laboratory Director

Figure 2. Assay report of selected pyritized amphibolite from the Mother Lode prospect.