

GEOLOGICAL SURVEY OF WYOMING  
MINERAL REPORT MR 83-3

FIELD NOTES ON THE CARRIE SHIELDS GOLD MINE,  
SOUTH PASS DISTRICT, WYOMING

by

W. Dan Hausel

1983

The Carrie Shields mine is located in the SE $\frac{1}{4}$  section 21, T.29N., R.100W. of the South Pass 7 $\frac{1}{2}$  minute quadrangle (Figure 1). This mine lies along Willow Creek, one mile to the east of South Pass City. The Carrie Shields Mine is located within the South Pass greenstone belt which was Wyoming's most prolific gold producer. An estimated 325,000 ounces of gold were produced from this district in past years (Hausel, 1980).

The mine was developed by a portal along a N60 $^{\circ}$ E trending sheared auriferous vein. From the adit, the mine workings drifted along a N60 $^{\circ}$ E trending shear for about 100 feet, and then drifted 25 feet to the southeast to where the Carrie Shields intersected the gold-bearing vein. From this point, the drift was developed 75 feet into the vein, and then stoping operations followed the vein several feet below the drift as well as worked the 53 $^{\circ}$ SE dipping vein by stopes to the surface. This stoping operation continued along trend for at least 140 feet (Figure 2). The extent of the stopes however is not known in that they were not entered because of unstable ground. Where the stopes intersected the surface, the mine was entered by a shaft. At the shaft's entrance, are the remains of an old cabin and an arrastra. The arrastra is indicative of the old age and early history of this operation.

It has been estimated that 1,850 ounces of gold were produced from this mine, and that the mined ore averaged one ounce per ton (Hausel, 1980,

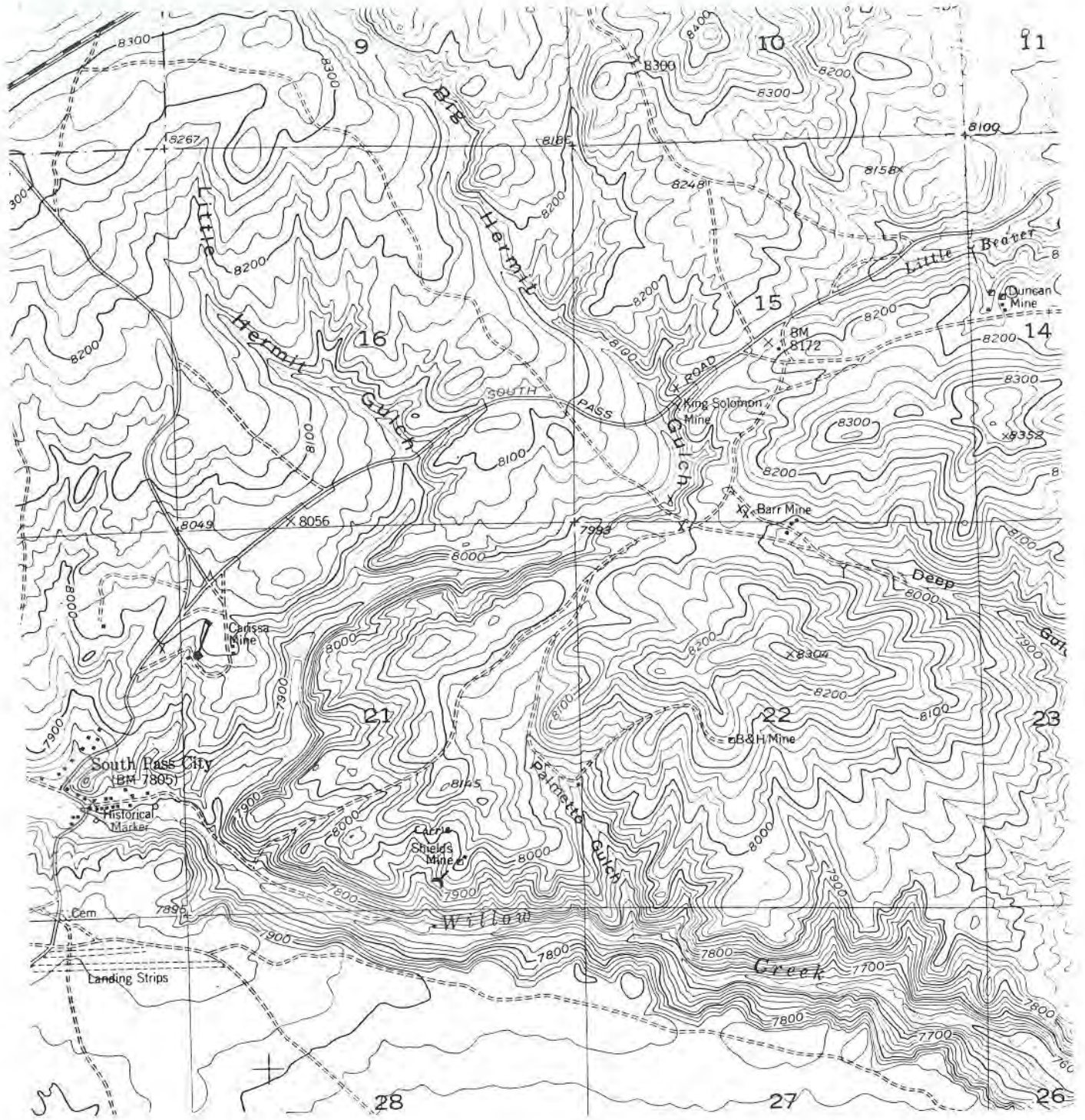


Figure 1. Location map of the Carrie Shields Mine (modified from the South Pass 7½-minute quadrangle).

p.11). A grab sample of quartz vein from the mine dump (no. SPCS-7-83) was assayed for gold and none was detected (Figure 3). A second sample (no. SP-3-83) of quartz vein also had no detectable gold, but contained 0.04 ounces of silver per ton.

#### REFERENCES CITED

Hausel, W.D., 1980, Gold districts of Wyoming: Geological Survey of Wyoming, Rept. of Inv. no. 23, 71p.



# WYOMING ANALYTICAL LABORATORIES, INC.

Box 638 • 605 South Adams

(307) 742-7995

LARAMIE, WYOMING 82070

Dan Hausel  
Wyoming Geological Survey  
Box 3008, University Station  
Laramie, WY 82071

Request No.: 1866  
Date: December 14, 1983

## REPORT OF ANALYSIS

Lab No.	Customer ID		Gold	Silver
<del>A2151</del>	<del>#SP 3-83 10/28/83</del>	<del>oz/ton</del>	<del>&lt;0.01</del>	<del>0.04</del>
A2152	#SP 5-83 10/28/83	oz/ton	<0.01	0.03
A2153	#SPBH-1-83 B & H Mine 10/28/83	oz/ton	<0.01	0.16
A2154	#SPCS-2-83 Curie Shields 10/28/83	oz/ton	<0.01	<0.01
A2155	#SPDB-4-83 Doc Barr 10/28/83	oz/ton	<0.01	<0.01
A2156	#SPDM-6-83 Diana Mine 10/28/83	oz/ton	<0.01	<0.01

Customer ID ~~SPCS-7-83 Curie Shields, 11/1/83~~

Lab No. ~~A2197~~

Gold	oz/ton	<del>&lt;0.01</del>
Copper	wt. %	X
Iron	wt. %	X

*Sonja G. Ringen*  
Sonja G. Ringen  
Laboratory Supervisor

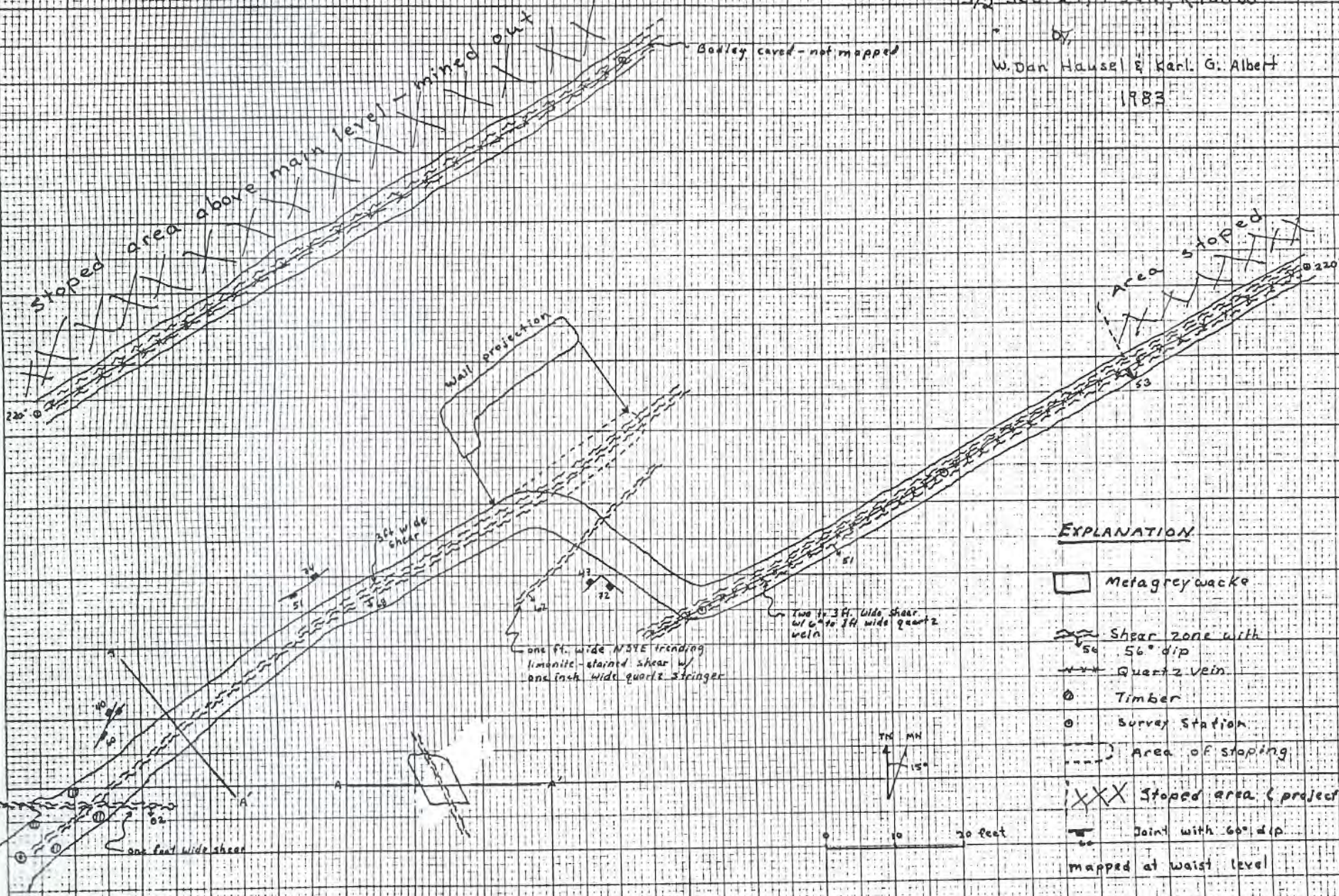
Figure 3. Assay report on grab sample number SPCS-7-83.  
‡ SP 3-83.

CARRIE SHIELDS MINE

S/2 Sec 21, T29N, R100W

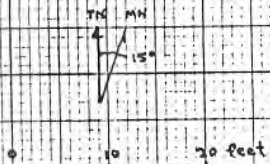
by W. Dan Hausel & Karl G. Albert

1983



EXPLANATION

- Metagreywacke
- Shear zone with 54 to 56° dip
- Quartz Vein
- Timber
- Survey Station
- Area of stoping
- Stoped area (projected)
- Joint with 60° dip mapped at waist level



MR 83-3

# GEOLOGIC MAP OF THE CARRIE SHIELDS MINE

1/2 sec. 21, T.29N., R.100W.

by

W. Dan Hausel & Karl G. Albert

1983

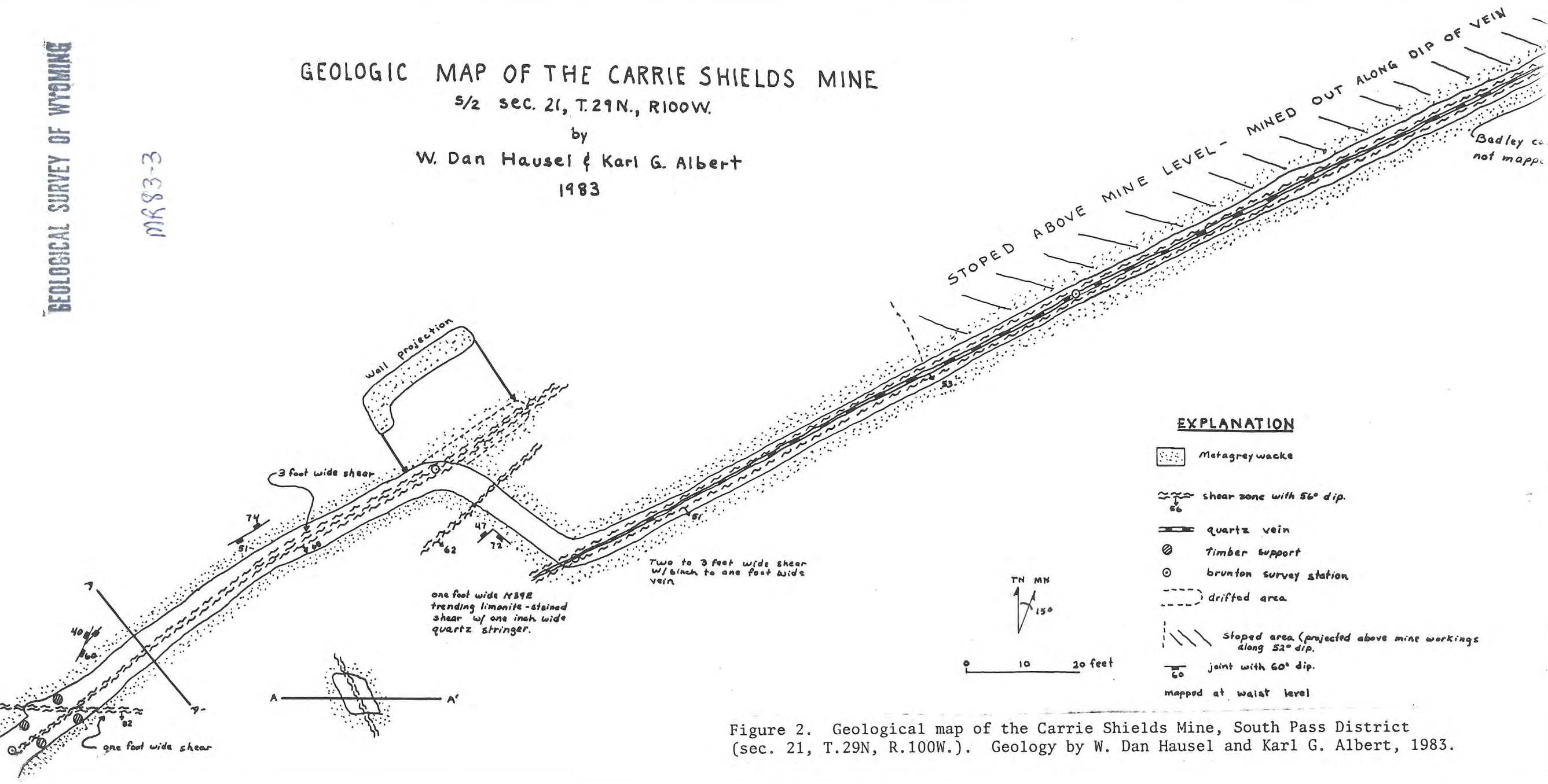


Figure 2. Geological map of the Carrie Shields Mine, South Pass District (sec. 21, T.29N, R.100W.). Geology by W. Dan Hausel and Karl G. Albert, 1983.