

ASSAY REPORT ON SAMPLES COLLECTED FROM THE LEWISTON, BURR, AND
SECTION 33 MINES, LEWISTON DISTRICT, SOUTH PASS

by

W. Dan Hause1

1983

During the fall 1983 field season a brief field examination of some mines in the Lewiston District was undertaken. These mines occur on the Radium Springs 7½ minute quadrangle (Figure 1). The mineralized zones occur predominately as quartz veins in metagreywacke. Sample number SPLN-8-83 was a grab sample of vein material collected from the Lewiston mine dump. Sample number SPLN-9-83 was a chip sample of vein material from a mine in the SE¼ section 33, T.29N, R.98W. Sample number SPBR-14-83 was a grab sample of vein material from the Burr Mine dump.

All three samples were assayed for gold and tungsten and none was detected (Figure 2). The tungsten assays are a particular problem in that each sample contained several grains and blebs (up to 4 to 6 mm across) of scheelite. Thus the tungsten assays are suspect.

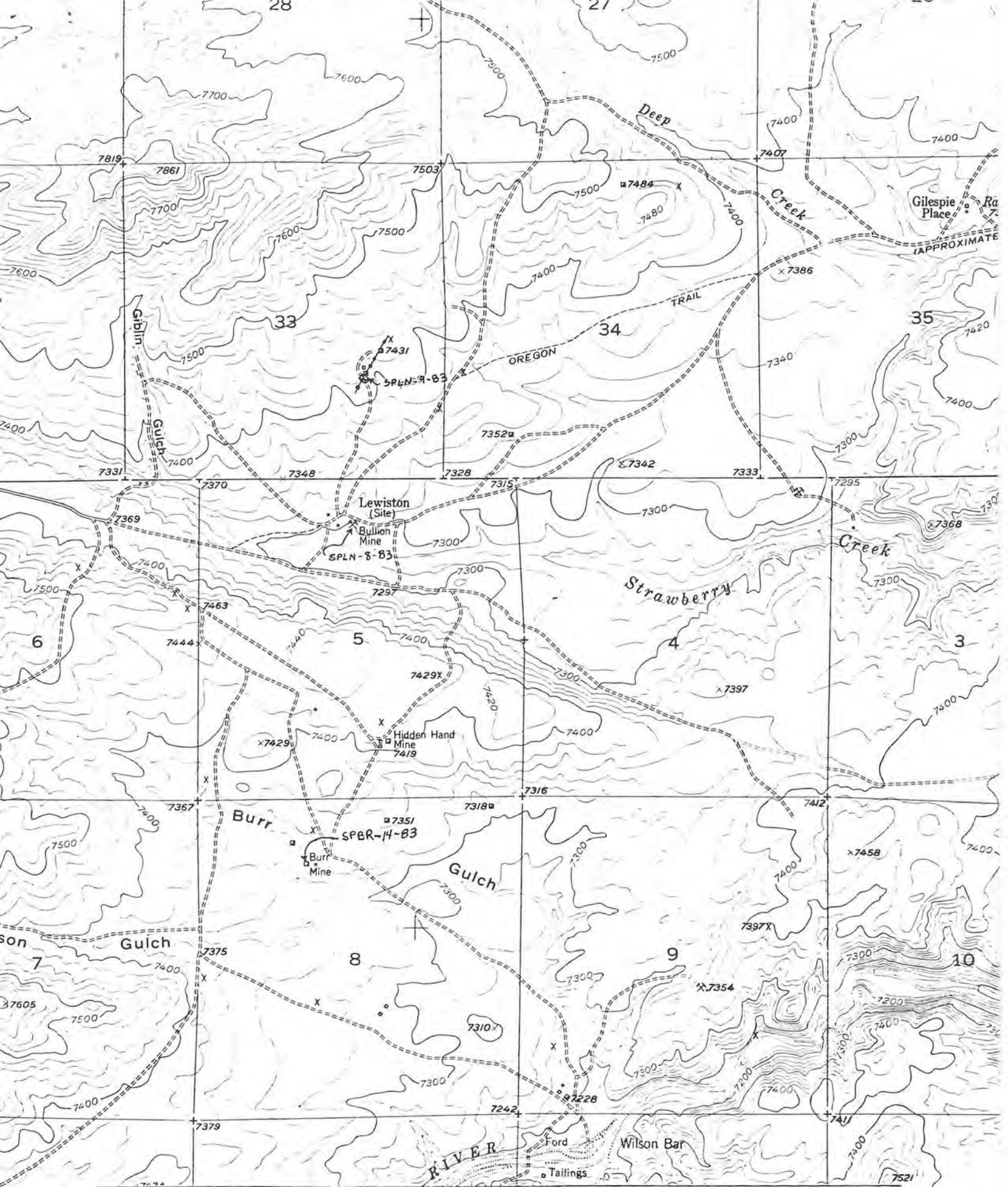


Figure 1. Location map of Lewiston District mines



WYOMING ANALYTICAL LABORATORIES, INC.

Box 638 • 605 South Adams

(307) 742-7995

LARAMIE, WYOMING 82070

Dan Hausel
Wyoming Geological Survey
Box 3008, University Station
Laramie, WY 82071

Request No: 1874
Date: December 14, 1983

REPORT OF ANALYSIS

Customer ID	SPLN-8-83 Lewiston Mine 11/2/83	SPBR-14-83 Burr Mine 11/2/83	SPLN-9-83 Sec. 33, 29N, 98W 11/2/83	SPWD-11-83 Dre. Gold Mine, 11/2/83
Lab No.	A2193	A2194	A2195	A2196
Gold oz/ton	<0.01	<0.01	<0.01	<0.01
Silver oz/ton	X	X	X	0.61
Tungsten mg/kg	<100	<100	<100	X

Figure 2. Assay report on Lewiston District samples.