

REPORT ON COPPER SAMPLES FROM THE JELM MOUNTAIN DISTRICT,
ALBANY COUNTY

by W. Dan Hausel

1983

The Jelm Mountain district includes Jelm Mountain as well as the Bosler Creek area to the west of Jelm Mountain. The two samples collected for this report occur on the Jelm Mountain 7½-minute quadrangle in southwestern Albany County (Figure 1).

Sample JM-1-83 was collected as a chip sample above a collapsed adit in the E½ section 26, T.13N., R.77W. This adit trends westerly where it connects with a ventilation shaft approximately 150 to 200 feet to the west. The mineralized trend consists of a rehealed silicified, epidotized breccia zone trending N56°W and dipping near vertical. The host rock is a biotite-amphibole schist partially stained pink. The pink stain may be due to potassic alteration.

Visible copper minerals include malachite and tenorite. Some pyrite also occurs associated with gossan. The chip sample of cupriferous epidotized schist assayed 0.23 percent copper, 0.09 ounces per ton silver, and no detectable gold (Figure 2).

Sample JM-2-83 was a selected sample collected from a mine dump in section 25, T.13N., R.77W. (Figure 1). This prospect pit was developed on a N83°W, near vertical trending shear. The shear zone contains some quartz stringers as fracture fillings, up to four inches wide.

Visible minerals include chalcopyrite, cuprite, malachite, and azurite. The sample ran 0.22 percent copper, 0.07 ounces per ton in silver, and no detectable gold.

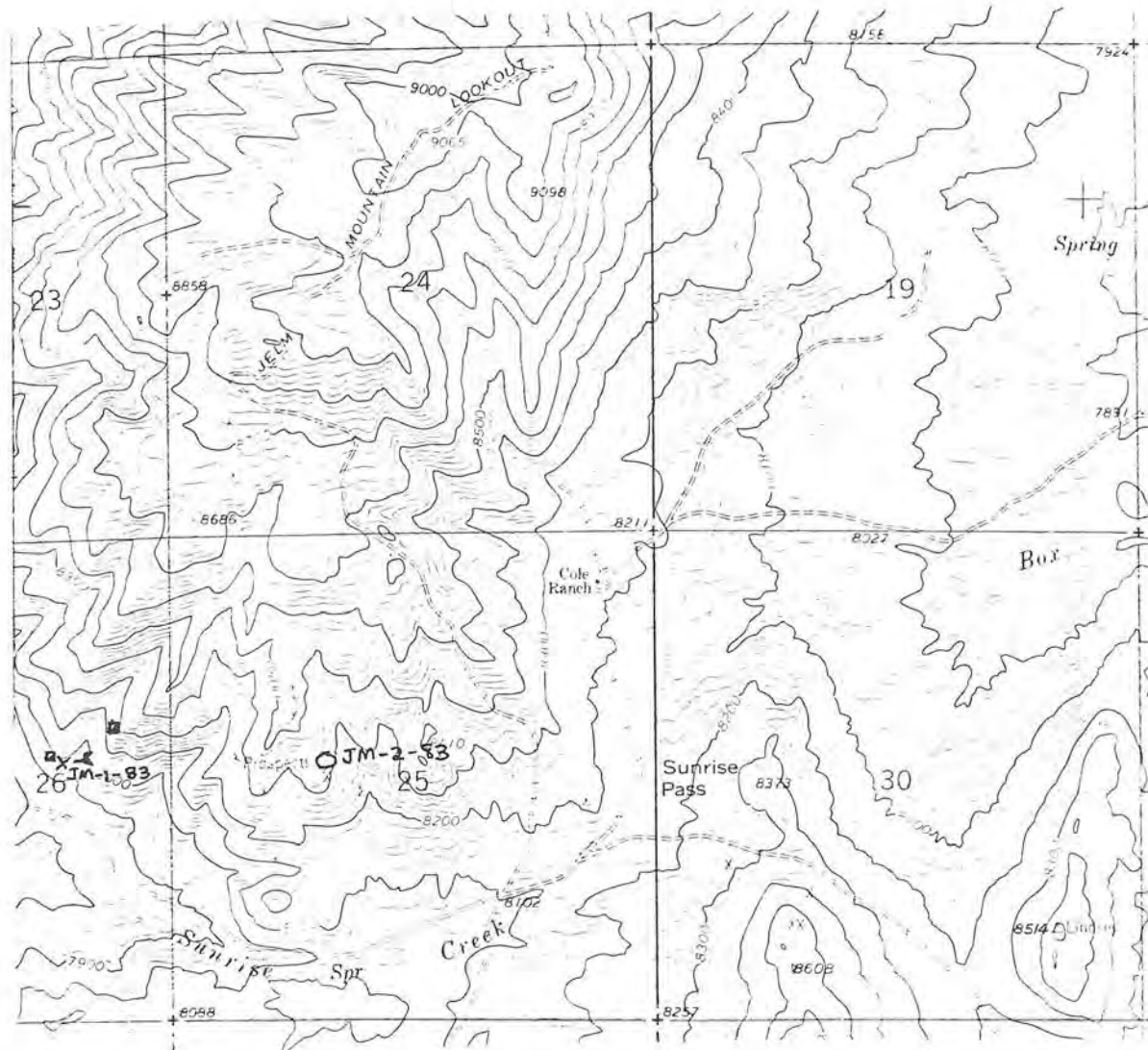


Figure 1. Location map of Jelms Mountain.



WYOMING ANALYTICAL LABORATORIES, INC.

Box 638 • 605 South Adams

(307) 742-7995

LARAMIE, WYOMING 82070

Dan Hausel
Wyoming Geological Surv.
Box 3008, Univ. Sta.
Laramie, WY 82071

Request No. 1584-063
Date: 26 July 1983

REPORT OF ANALYSIS

Customer ID		#JM-1-83, Mineralized	#JM-2-83, 5/3/83
Lab No.		breccia 5/3/82, Jelm. A0909	Jelm. A0910
<hr/>			
Gold	oz/gon	<0.01	<0.01
Copper	wt. %	0.23	0.22
Silver	oz/ton	0.09	0.07

Figure 2. Assay report of Jelm Mountain samples.