

FIELD NOTES AND ASSAY REPORT FOR THE AMERICAN MINE,
ALBANY COUNTY, WYOMING

by

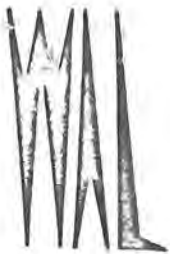
W. Dan Hausel

1983

The American Mine lies immediately south of Highway 230 and within one-half mile to the east of Mountain Home. The mine is found in the SW $\frac{1}{4}$ sec. 16, T.12N., R.78W. of Albany County, and on the Foxpark 7 $\frac{1}{2}$ -minute quadrangle. Presently, the mine workings are covered, but numerous malachite-and-azurite-stained samples are scattered on the ground.

The American Mine property was developed along N15⁰W trending silicified fractures, in granite. A sample of copper-stained silicified and altered granite was assayed for copper, gold and silver. The sample ran 1.37 percent copper, <0.01 ounces per ton gold, and 2.9 ounces per ton in silver.

From the surface expression of the mineralized rock, the deposit appears to be small and restricted in size.



WYOMING ANALYTICAL LABORATORIES, INC.

Box 638 • 605 South Adams

(307) 742-7995

LARAMIE, WYOMING 82070

Dan Hausel
Wyo. Geo. Survey
Box 3008, University Station
Laramie, WY 82071

Request No.: 1788-063
Date: September 15, 1983

REPORT OF ANALYSIS

| Customer ID | | AM-1-83 8/26/83 | Hub Mine HBM -3-83, 7/27/83 | DPM-24-83 | De Pass, DPM-26-83 Chip sample 8/26/83 |
|-------------|--------|--------------------|--------------------------------|-----------|---|
| Lab No. | | A1873 | A1874 | A1875 | A1876 |
| Gold | oz/ton | <0.01 | <0.01 | <0.01 | <0.01 |
| Copper | % | 1.37 | 0.41 | 0.96 | 1.79 |
| Silver | oz/ton | 2.9 | 4.4 | <0.1 | <0.1 |
| Nickel | mg/kg | -- | -- | -- | 74.0 |

Sonja G. Ringen
Sonja G. Ringen
Chemist

Sample AM-1-83 = Collected from mine dump material in sec 16, T. 12N., R. 78W.

The sample was an altered silicified granite stained by malachite and azurite. No primary sulfides were visible.

The American mine was developed on N15W trending silicified fractures in granite. The fractures carry visible upper staining.

D.H.

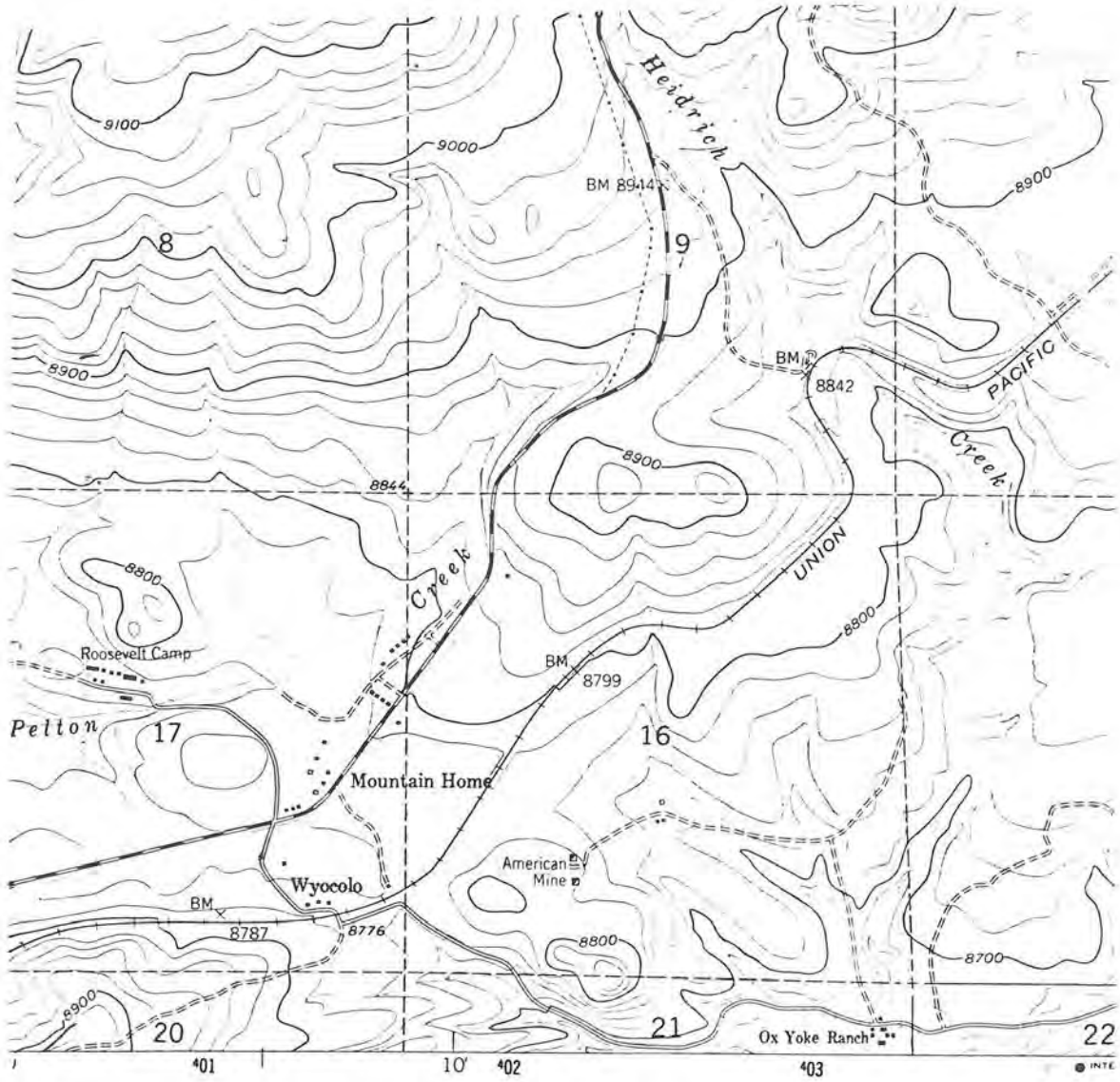


Figure 1. Location map of the American Mine (base map U.S. Geological Survey Foxpark 7½ minute quad)