

WALLROCK CANYON COPPER-SILVER PROSPECT, ALBANY COUNTY, WYOMING

by

W. Dan Hausel

1983

The Wallrock Canyon copper prospect is located in section 36, T19N, R73W, just south of the Wallrock Creek reservoir. This deposit occurs as copper replacement in the Casper Formation along the western flank of the Laramie Range. John Myers, geological assistant, was assigned to examine some gravel pits and quarries when he was checking a gravel pit that instead turned out to be a copper prospect (Figure 1). A selected sample was assayed and ran 44 percent copper and 11 ounces per ton in silver (Figure 2).

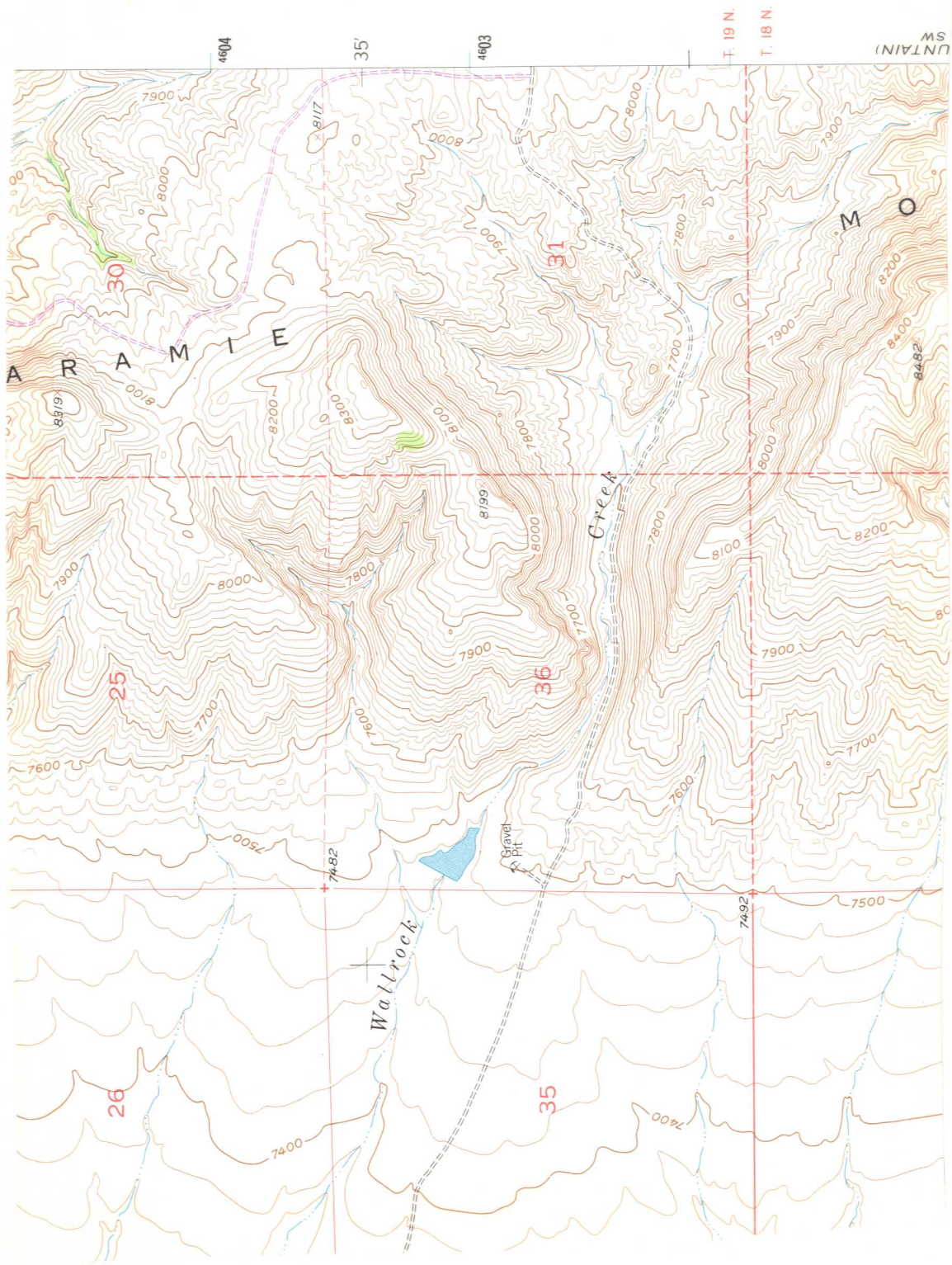
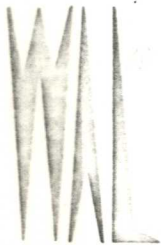


Figure 1. Location map of Wallrock Canyon copper prospect.



WYOMING ANALYTICAL LABORATORIES, INC.

605 South Adams

(307) 742-7995

LARAMIE, WYOMING 82070

Dan Hausel
Wyoming Geological Survey
Box 3008, Univ. Station
Laramie, WY 82071

Request No.: 1908
Date: 17 January 1984

REPORT OF ANALYSIS

Customer ID	DePass, DPM-26- chip sample 8-26-83	#H831101 -1	Ferris- Haggarty #FH-1-83 12/2/83	Green Hope #GH-1-83	Michigan Mine #MC-1-83	
Lab No.	A2327	A2328	A2329	A2330	A2331	
Gold	oz/ton	---	---	<0.1	<0.1	±0.1
Copper	wt.%	---	44.0	3.23	9.74	1.08
Platinum	oz/ton	<0.1	---	---	---	---
Silver	oz/ton	---	11.0	0.61	0.93	<0.1
Zinc	mg/kg	---	---	---	379	---
Iron	wt.%	---	---	---	---	21.0

Figure 2. Assay report of selected copper-stained limestone from Wallrock Canyon prospect.



WYOMING ANALYTICAL LABORATORIES, INC.

605 South Adams

(307) 742-7995

LARAMIE, WYOMING 82070

Dan Hausel
Wyoming Geological Survey
Box 3008, Univ. Station
Laramie, WY 82071

Request No.: 1908
Date: 17 January 1984

REPORT OF ANALYSIS

Customer ID		DePass, DPM-26- chip sample 8-26-83	#H831101 -1	Ferris- Haggarty #FH-1-83 12/2/83	Green Hope #GH-1-83	Michigan Mine #MC-1-83
Lab No.		A2327	A2328	A2329	A2330	A2331
Gold	oz/ton	---	---	<0.1	<0.1	<0.1
Copper	wt. %	---	44.0	3.23	9.74	1.08
Platinum	oz/ton	<0.1	---	---	---	---
Silver	oz/ton	---	11.0	0.61	0.93	<0.1
Zinc	mg/kg	---	---	---	379	---
Iron	wt. %	---	---	---	---	21.0

Sonja G. Ringen
Laboratory Supervisor