

FIELD NOTES ^{AND} ~~AND~~ ASSAY REPORT FOR THE FRANKLIN MINE, SOUTH PASS DISTRICT, WYOMING
by
W. Dan Hausel
1983

The Franklin Mine is located in section 20, T. 29 N., R. 100 W. of the South Pass District. The mine is located on the South Pass City 7½-minute quadrangle.

After hearing rumors that several hand specimens containing visible gold were collected from the mine dump, I decided to examine the tailings. The mine dump consists of metagraywacke with lesser fragments of pegmatite. Several pieces of greywacke contain quartz veins and veinlets. Sample FRK-1 was a specimen of metagraywacke cut by a quartz vein. This sample assayed 0.50 ounces per ton gold.

No visible gold was observed.

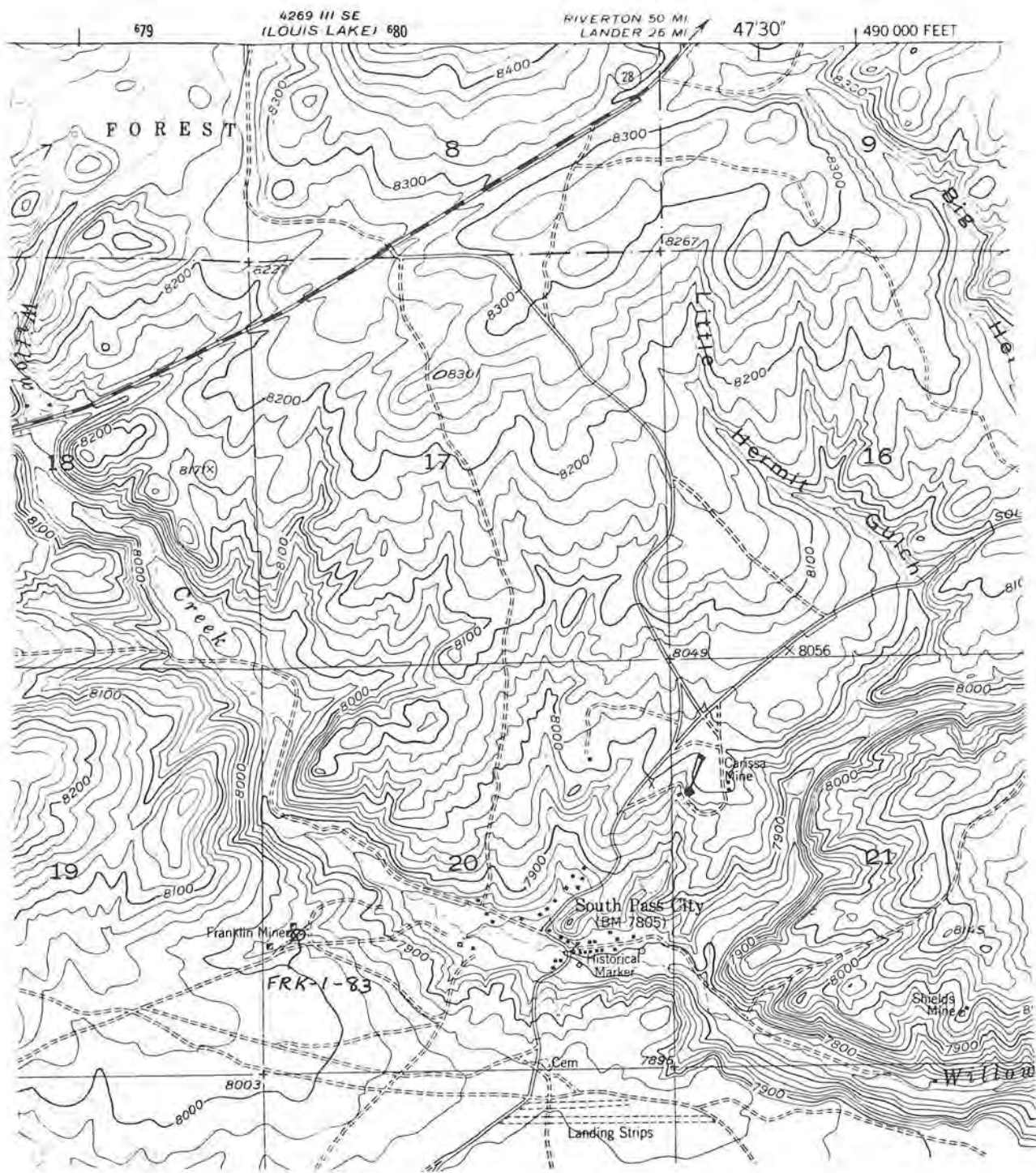


Figure 1. Location map of the Franklin Mine (base map U.S. Geological Survey South Pass City 7½-minute quad.).



WYOMING ANALYTICAL LABORATORIES, INC.

Box 638 • 605 South Adams

(307) 742-7995

LARAMIE, WYOMING 82070

Dan Hausel
Wyoming Geological Survey
Box 3008, Univ. Sta.
Laramie, WY 82071

Request No. 1590-063

Date: 26 July 1983

REPORT OF ANALYSIS

Customer ID	Lab No.	Gold (oz/ton)
Caribou Mine South Pass #CBU-1-83	A0955	0.33
SW of Caribou So. Pass #CBU-2-83	A0956	<0.01
So. Pass Franklin Mine #FRK-1	A0957	0.50

Sonja G. Ringen
Sonja G. Ringen
Chemist

Figure 2. Assay report on sample # FRK-1.
