

THE GEOLOGICAL SURVEY OF WYOMING

Gary B. Glass, State Geologist

OPEN FILE REPORT 87-1D

PRELIMINARY MAP OF KNOWN SURFICIAL STRUCTURAL  
FEATURES FOR THE GILLETTE 1° x 2° QUADRANGLE

compiled by

Jon K. King, Phillip L. Greer, and Alan J. VerPloeg

Laramie, Wyoming  
1987

This report has not been reviewed for conformity with the editorial standards of the Geological Survey of Wyoming.

This listing of sources of information and index map were prepared to accompany the preliminary map of known surficial structural features for the Gillette 1°x 2° Quadrangle.

### Sources of geologic data

#### General

(These references are the sources of geologic data where more detailed, specific maps were not available).

Case, J.C., 1986, Earthquakes and related geologic hazards in Wyoming: Geological Survey of Wyoming Public Information Circular 26, 22 p., sheet 1, scale 1:1,000,000.

Love, J.D., Christiansen, A.C., and McGrew, L.W., compilers 1978, Preliminary geologic map of the Gillette 1°x 2° Quadrangle, northeastern Wyoming and western South Dakota: U.S. Geological Survey Open File Report 78-343, scale 1:250,000.

#### Specific

1. Bergendahl, M.H., Davis, R.E., and Izett, G.A., 1961, Geology and mineral deposits of Carlile Quadrangle, Crook County, Wyoming: U.S. Geological Survey Bulletin 1082-J, p. 613-706, map scale 1:24,000.
2. Bohor, B.F., Kent, B.H., and Haddock, D.R., 1979, Geologic map and coal sections of the Twentymile Butte Quadrangle, Campbell County, Wyoming: U.S. Geological Survey Miscellaneous Field Studies Map MF-1073, scale 1:24,000.
3. Darton, N.H., and O'Hara, C.C., 1905, Description of the Aladdin Quadrangle [Wyoming - South Dakota]: U.S. Geological Survey Geologic Atlas Folio 128, scale 1:125,000.
4. Darton, N.H., and O'Hara, C.C., 1905, Description of the Sundance Quadrangle [Wyoming - South Dakota]: U.S. Geological Survey Geologic Atlas Folio 127, scale 1:125,000.
5. Davis, R.E., and Izett, G.A., 1962, Geology and uranium deposits of the Strawberry Hill Quadrangle, Crook County, Wyoming: U.S. Geological Survey Bulletin 1127, 87 p., map scale 1:24,000.
6. Elwood, M.W., 1978, Geology of the Black Buttes, Crook County, Wyoming: M.S. thesis, South Dakota School of Mines and Technology, Rapid City, South Dakota, 123 p., map scale 1:16,000.
7. Fashbaugh, E.F., 1979, Geology of the igneous extrusive and intrusive rocks in the Sundance area, Crook County, Wyoming: M.S. thesis, University of North Dakota, Grand Forks, North Dakota, 97 p., plate 1, scale 1:10,000, plates 2, 3, and 4, scale 1:5,000.
8. \*Galyardt, G.L., 1974, Preliminary geologic map and coal resources of The Gap Quadrangle, Campbell County, Wyoming: U.S. Geological Survey Open File Report 74-98, scale 1:24,000.

9. \*Galyardt, G.L., 1974, Preliminary geologic map and coal resources of the Coyote Draw Quadrangle, Campbell County, Wyoming: U.S. Geological Survey Open File Report 74-350, scale 1:24,000.
10. \*Galyardt, G.L., 1980, Preliminary geologic map and coal deposits of the Appel Butte Quadrangle, Campbell County, Wyoming: U.S. Geological Survey Open File Report 80-53, scale 1:24,000.
11. \*Galyardt, G.L., 1980, Geologic map and coal deposits of the Four Bar J Ranch Quadrangle, Campbell County, Wyoming: U.S. Geological Survey Open File Report 80-648, scale 1:24,000.
12. \*Grazis, S.L., 1977, Geologic map and coal resources of the Pleasantdale Quadrangle, Campbell County, Wyoming: U.S. Geological Survey Coal Investigations Map C-76, scale 1:24,000.
13. \*Grazis, S.L., 1977, Geologic map and coal resources of the Scaper Reservoir Quadrangle, Campbell County, Wyoming: U.S. Geological Survey Coal Investigations Map C-77, scale 1:24,000.
14. \*Grazis, S.L., 1977, Geologic map of the coal resources of The Gap SW Quadrangle, Campbell County, Wyoming: U.S. Geological Survey Coal Investigations Map C-78, scale 1:24,000.
15. \*Grazis, S.L., 1977, Geologic map of the coal resources of the Saddle Horse Butte Quadrangle, Campbell County, Wyoming: U.S. Geological Survey Coal Investigations Map C-79, scale 1:24,000.
16. \*Haddock, D.R., Kent, B.H., and Bohor, B.F., 1976, Geologic map and coal sections of the Croton Quadrangle, Campbell County, Wyoming: U.S. Geological Survey Miscellaneous Field Studies Map MF-826, scale 1:24,000.
17. \*Hayes, P.T., 1973 [1974], Preliminary geologic map of the Homestead Draw SW [Croton 1 SW] Quadrangle, Campbell County, Wyoming: U.S. Geological Survey Miscellaneous Field Studies Map MF-544, scale 1:24,000.
18. Izett, G.A., Geologic map of the Storm Hill Quadrangle, Crook County, Wyoming: U.S. Geological Survey Miscellaneous Investigations Map I-372, scale 1:24,000.
19. Jenner, G.A., Jr., 1984, Tertiary alkalic igneous activity, potassic fenitization, carbonatitic magmatism, and hydrothermal activity in the central and southeastern Bear Lodge Mountains, Crook County, Wyoming: M.S. thesis, University of North Dakota, Grand Forks, North Dakota, 232 p., map scale 1:10,000.
20. \*Kent, B.H., 1976, Geologic map and coal sections of the Recluse Quadrangle, Campbell County, Wyoming: U.S. Geological Survey Miscellaneous Field Studies Map MF-732, scale 1:24,000.
21. \*Kent, B.H., 1976, Geologic map and coal sections of the Wildcat Quadrangle, Campbell County, Wyoming: U.S. Geological Survey Miscellaneous Field Studies Map MF-735, scale 1:24,000.

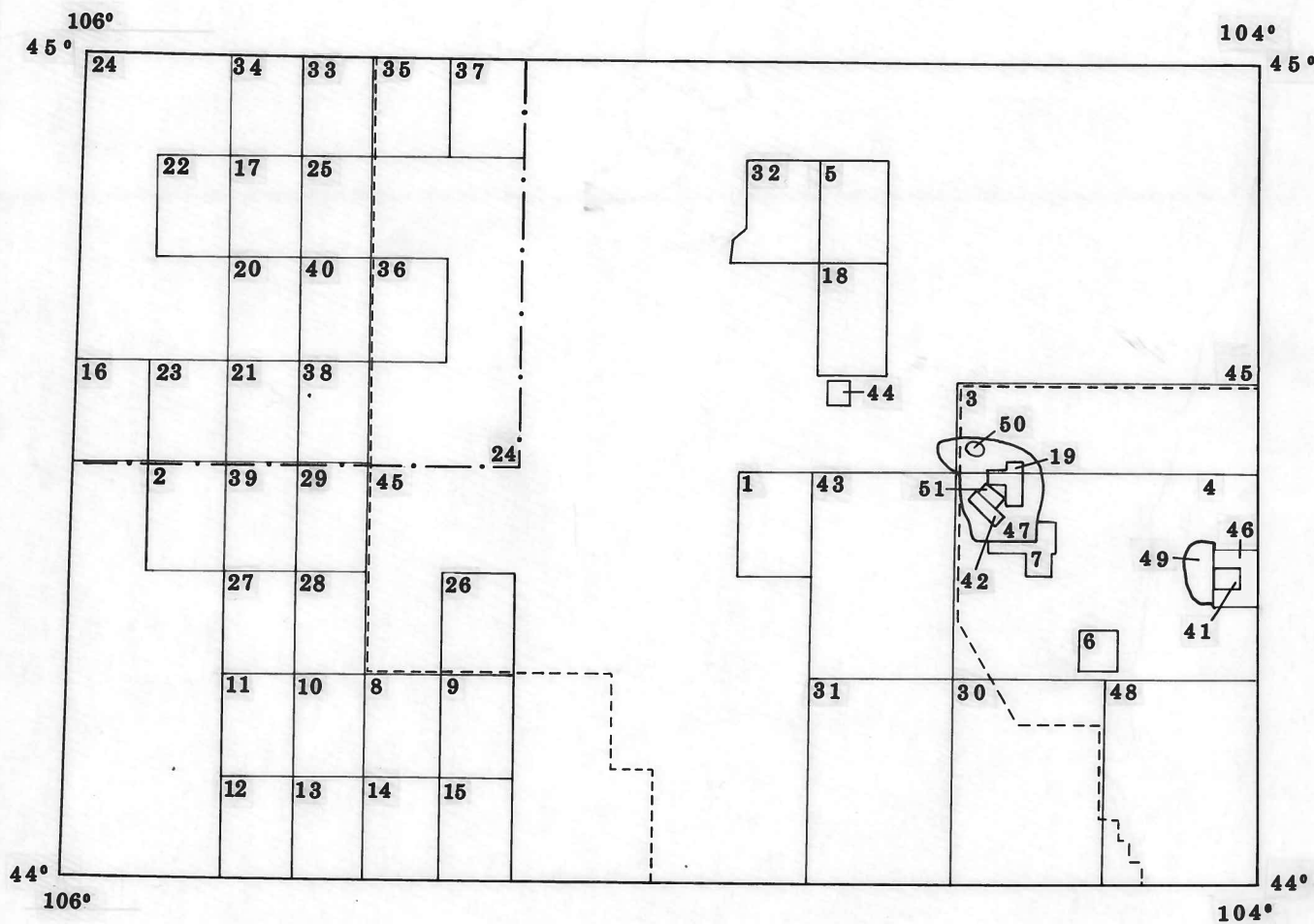
22. Kent, B.H., and Berlage, L.J., 1981, Geologic map and coal sections of the Reservoir Creek Quadrangle, Campbell County, Wyoming: U.S. Geological Survey Miscellaneous Field Studies Map MF-1336, scale 1:24,000.
23. \*Kent, B.H., Haddock, D.R., and Bohor, B.F., 1978, Geologic map and coal sections of the Truman Draw Quadrangle, Campbell County, Wyoming: U.S. Geological Survey Miscellaneous Field Studies Map MF-917, scale 1:24,000.
24. Kent, B.H., and Munson, B.E., 1978, Preliminary geologic map of principal coal beds in the western part of the Recluse 1°x 1/2° Quadrangle, Campbell County, Wyoming: U.S. Geological Survey Miscellaneous Field Studies Map MF-1045, scale 1:100,000.
25. \*Landis, E.R., and Hayes, P.T., 1973, Preliminary geologic map of the White Tail Butte [Croton 1 SE] Quadrangle, Campbell County, Wyoming: U.S. Geological Survey Open File Report, scale 1:24,000.
26. \*Law, B.E., 1974, Preliminary geologic map and coal resources of the Fortin Draw Quadrangle, Campbell County, Wyoming: U.S. Geological Survey Open File Report 74-36, scale 1:24,000.
27. \*Law, B.E., 1975, Preliminary geologic map and coal resources of the Oriva Quadrangle, Campbell County, Wyoming: U.S. Geological Survey Open File Report 75-195, scale 1:24,000.
28. \*Law, B.E., 1978, Geological map and coal deposits of the Gillette West Quadrangle, Campbell County, Wyoming: U.S. Geological Survey Miscellaneous Field Studies Map MF-974, scale 1:24,000.
29. Mapel, W.J., 1973, Preliminary geologic map of the Rawhide School Quadrangle, Campbell County, Wyoming: U.S. Geological Survey Open File Map 73-177, scale 1:24,000.
30. Mapel, W.J., and Pillmore, C.L., 1963, Geology of the Inyan Kara Mountain Quadrangle, Crook and Weston Counties, Wyoming: U.S. Geological Survey Bulletin 1121-M, 56 p., plate 1, scale 1:48,000.
31. Mapel, W.J., and Pillmore, C.L., 1964, Geology of the Upton Quadrangle, Crook and Weston Counties, Wyoming: U.S. Geological Survey Bulletin 1181-J, 54 p., plate 1, scale 1:48,000.
32. Maxwell, C.H., and Robinson, C.S., 1978, Geologic map of the southeast quarter of the Cedar Ridge 15-minute Quadrangle, Crook County, Wyoming: U.S. Geological Survey Miscellaneous Investigations Map I-1040, scale 1:24,000.
33. \*McKay, E.J., 1973, Preliminary geologic map of the Homestead Draw [Croton 1 NE] Quadrangle, Campbell County, Wyoming: U.S. Geological Survey Open File Report 73-168, scale 1:24,000.
34. \*McKay, E.J., 1973, Preliminary geologic map of the Corral Creek [Croton 1 NW] Quadrangle, Campbell County, Wyoming: U.S. Geological Survey Open File Report 73-169, scale 1:24,000.

35. \*McKay, E.J., 1974, Preliminary geologic map of the Rocky Butte [Bertha 2 NW] Quadrangle, Campbell County, Wyoming: U.S. Geological Survey Open File Report 74-173, scale 1:24,000.
36. \*McKay, E.J., 1974, Preliminary geologic map of the Oliver Draw [Bertha 3 NW] Quadrangle, Campbell County, Wyoming: U.S. Geological Survey 74-174, scale 1:24,000.
37. \*McKay, E.J., and Landis, E.R., 1974, Preliminary geologic map of the Nipple Butte [Bertha 2 NE] Quadrangle, Campbell County, Wyoming: U.S. Geological Survey Open File Report 74-172, scale 1:24,000.
38. \*McKay, E.J., and Mapel, W.J., 1973, Preliminary geologic map of the Calf Creek Quadrangle, Campbell County, Wyoming: U.S. Geological Survey Open File Report 73-170, scale 1:24,000.
39. \*McLaughlin, R.J., and Hayes, P.T., 1973 [1974], Preliminary geologic map of the Oriva NW [Townsend Spring] Quadrangle, Campbell County, Wyoming: U.S. Geological Survey Miscellaneous Field Studies Map MF-545, scale 1:24,000.
40. \*McLaughlin, R.J., and McKay, E.J., 1973, Preliminary geologic map of the Pitch Draw Quadrangle, Campbell County, Wyoming: U.S. Geological Survey Open File Report 73-171, scale 1:24,000.
41. Norby, J.W., 1984, Geology and geochemistry of Precambrian amphibolites and associated gold mineralization Tinton district, Lawrence County, South Dakota and Crook County, Wyoming: M.S. thesis, South Dakota School of Mines and Technology, Rapid City, South Dakota, 144 p., plate 1, scale 1:6,000.
42. O'Toole, F.S., 1981, Petrology of the Cenozoic phonolites and related rocks of the Houston Creek area, Bear Lodge Mountains, Wyoming: M.S. thesis, University of North Dakota, Grand Forks, North Dakota, 112 p., map scale 1:10,000.
43. Pillmore, C.L., and Mapel, W.J., 1963, Geology of the Nefsy Divide Quadrangle, Crook County, Wyoming: U.S. Geological Survey Bulletin 1121-E, 52 p., map scale 1:48,000.
44. Robinson, C.S., 1956, Geology of the Devils Tower National Monument, Wyoming: U.S. Geological Survey Bulletin 1021-I, p. 289-302, map scale 1:48,000.
45. Robinson, C.S., Mapel, W.J., and Bergendahl, M.H., 1964, Stratigraphy and structure of the northern and western flanks of the Black Hills uplift, Wyoming, Montana, and South Dakota: U.S. Geological Survey Professional Paper 404, 134 p., plate 1, scale 1:96,000.
46. Smith, W.C., and Page, L.R., 1941, Tin-bearing pegmatites of the Tinton district, Lawrence County, South Dakota [Wyoming] - a preliminary report: U.S. Geological Survey Bulletin 922-T, p. 594-630, map scale 1:24,000.
47. Staatz, M.H., 1983, Geology and description of thorium and rare-earth deposits in the southern Bear Lodge Mountains, northeastern Wyoming: U.S.

Geological Survey Professional Paper 1049-B, 52 p., plate 1, scale 1:24,000.





48. **Van Lieu, J.A.**, 1969, Geologic map of the Four Corners Quadrangle, Wyoming and South Dakota: U.S. Geological Survey Miscellaneous Investigations Map I-581, scale 1:48,000.
49. **Welch, C.M.**, 1974, A preliminary report on the geology of the Mineral Hill area, Crook County, Wyoming: M.S. thesis, South Dakota School of Mines and Technology, Rapid City, South Dakota, 83 p., map scale 1:9,600.
50. **White, S.F.**, 1980, Petrology of the Cenozoic igneous rocks of the Lytle Creek area, Bear Lodge Mountains, Wyoming: M.S. thesis, University of North Dakota, Grand Forks, North Dakota, 69 p., map scale 1:10,000.
51. **Wilkinson, Michael**, 1982, Petrology and alteration in the core of the Bear Lodge Tertiary intrusive complex, Bear Lodge Mountains, Crook County, Wyoming: M.S. thesis, University of North Dakota, Grand Forks, North Dakota, 127 p., map scale 1:10,000.

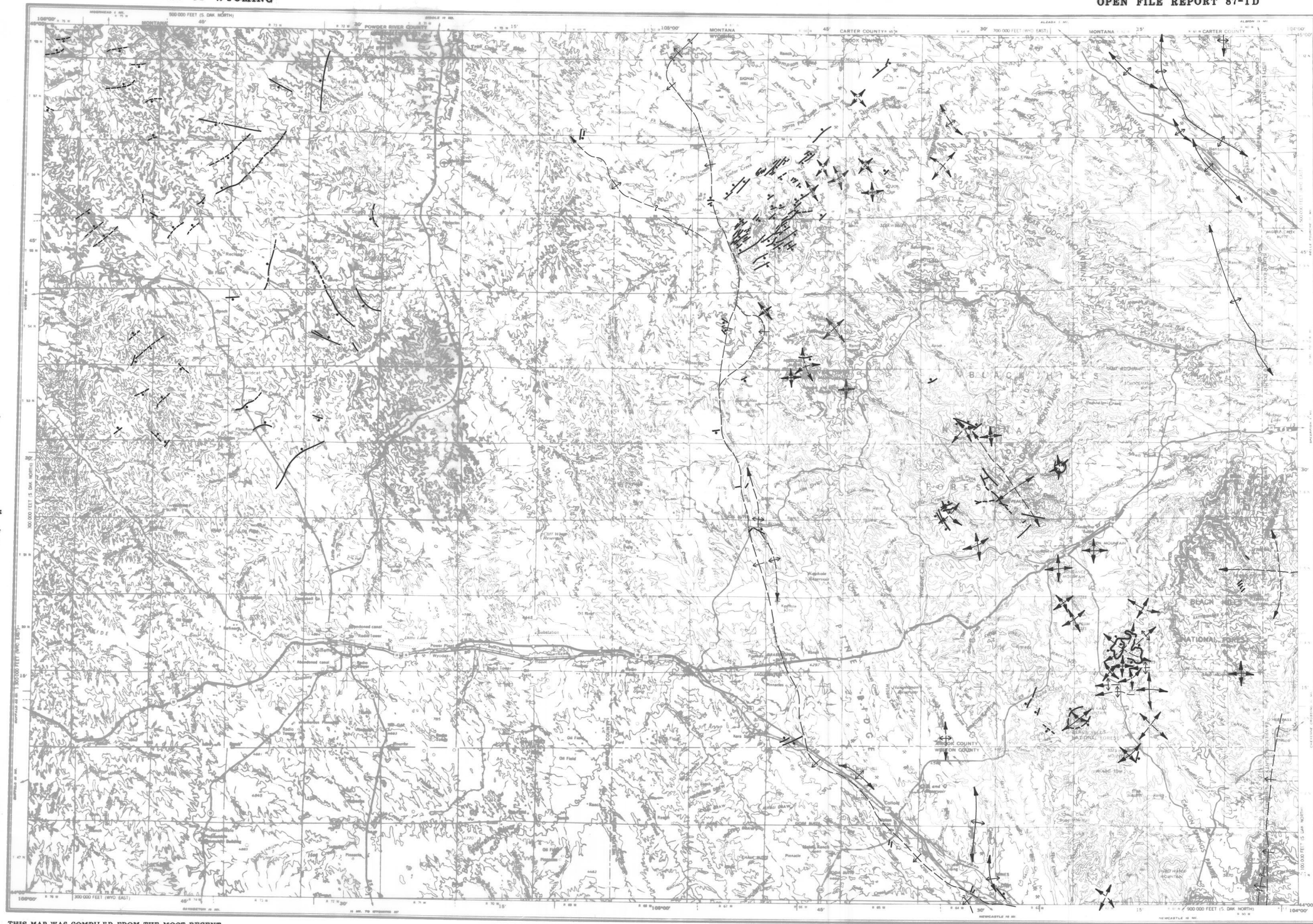
\*as shown on Love and others, 1978.



Index To Sources Of Geologic Data

## EXPLANATION

-  **Dome**
-  **Anticline**-arrows perpendicular to axis show symmetry, i.e., short arrow indicates flank with steeper dip. Axis is dashed where covered or approximately located. Arrow on axis indicates direction of plunge.
-  **Monocline**-arrow indicates flank with steeper dip. Axis is dashed where covered or approximately located. Queried where existence is questionable.
-  **Normal Fault**-ball on downthrown block (dashed where covered or approximately located). Queried where existence is questionable.



THIS MAP WAS COMPILED FROM THE MOST RECENT AVAILABLE INFORMATION AND IS ONLY AS RELIABLE AND COMPLETE AS THE SOURCES CONSULTED. SOME SMALLER FEATURES WERE OMITTED SINCE THEY COULD NOT BE PLOTTED AT THIS SCALE. SOURCES CONSULTED ARE LISTED IN ACCOMPANYING REFERENCE LIST.



PRELIMINARY MAP OF KNOWN SURFICIAL STRUCTURAL FEATURES FOR THE GILLETTE 1 x 2 QUADRANGLE  
COMPILED BY JON K. KING, PHILLIP L. GREER, AND ALAN J. VER PLOEG

BASE MAP FROM THE U.S. GEOLOGICAL SURVEY, 1976  
THIS MAP HAS NOT BEEN REVIEWED FOR CONFORMITY WITH THE EDITORIAL STANDARDS OF THE GEOLOGICAL SURVEY OF WYOMING.