

Index map of southeastern Wyoming showing the decorative stone sites within Medicine Bow National Forest.

### Introduction

Eight sites having granite or other rock potentially suitable for quarrying as decorative stone have been identified in the Medicine Bow National Forest of southeastern Wyoming (see index map above). Of these eight sites, six have rock that may be used for decorative dimensional stone, and two should provide decorative aggregate. Because there are five sites near the town of Albany (Sites 2 - 5 and 8), one operation could conceivably produce as many as four colors of dimensional stone and at least one color of decorative aggregate. These stone products could be processed at a central plant. The availability of rail transportation at Albany further enhances the economics of these sites.

### Specifications for decorative stones

For use as decorative stone, quarry sites must offer large reserves of distinctive, uniform, marketable stone. The site must also have easy access to existing transportation routes. In addition, decorative dimensional stones must have joint spacings, hardness, durability, and other physical properties that permit the quarrying of 5' x 5' x 10' blocks, the industry standard for dimensional stone. Smaller blocks may be quarried for monument stone. The two decorative aggregate sites identified in this study were selected on the basis of durability and color, as well as their proximity to existing roads.

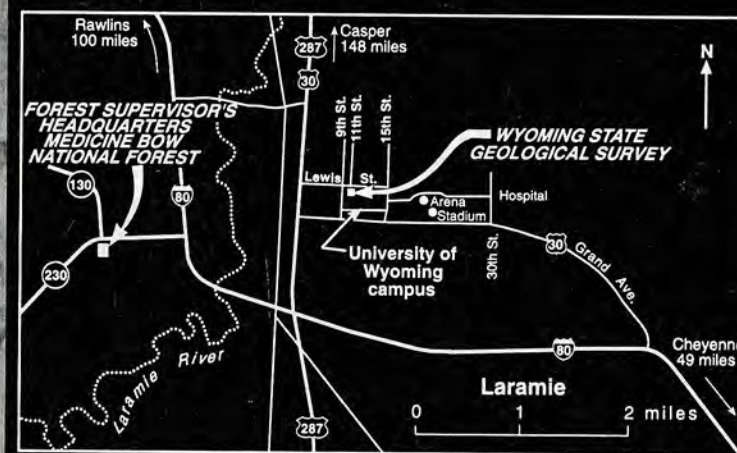
For more information on the Medicine Bow National Forest, contact:

U.S. Forest Service  
Forest Supervisor's Headquarters  
Medicine Bow National Forest  
2468 Jackson Street  
Laramie, Wyoming 82070-6535  
Phone (307) 745-8971



For more information on decorative stones and other industrial minerals in Wyoming, contact:

Industrial Minerals and Uranium Section  
Wyoming State Geological Survey  
Box 3008, University Station  
Laramie, Wyoming 82071-3008  
Phone (307) 766-2286  
Fax (307) 766-2605



Location map for Wyoming State Geological Survey and Forest Supervisor's Headquarters, Medicine Bow National Forest.



Cover Photograph. Snowy Range ridge and Medicine Bow National Forest viewed from Centennial Ridge, west of Centennial, Wyoming. (Photograph by R.W. Jones, 1993.)

Wyoming State Geological Survey  
Gary B. Glass, State Geologist

# DECORATIVE STONES

of the Medicine Bow National Forest, southeastern Wyoming

by

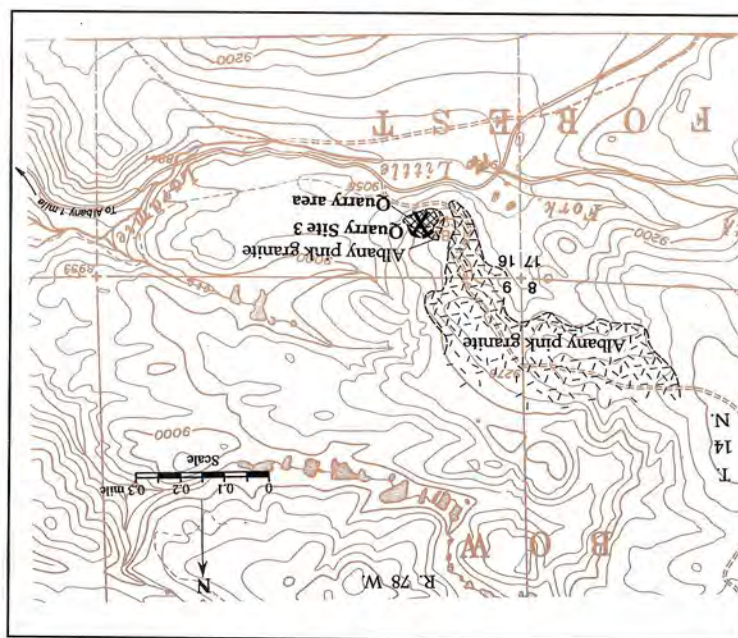
Ray E. Harris

Prepared in cooperation with the  
U.S. Forest Service, Rural Development Program



Public Information Circular 34  
Laramie, Wyoming

1994



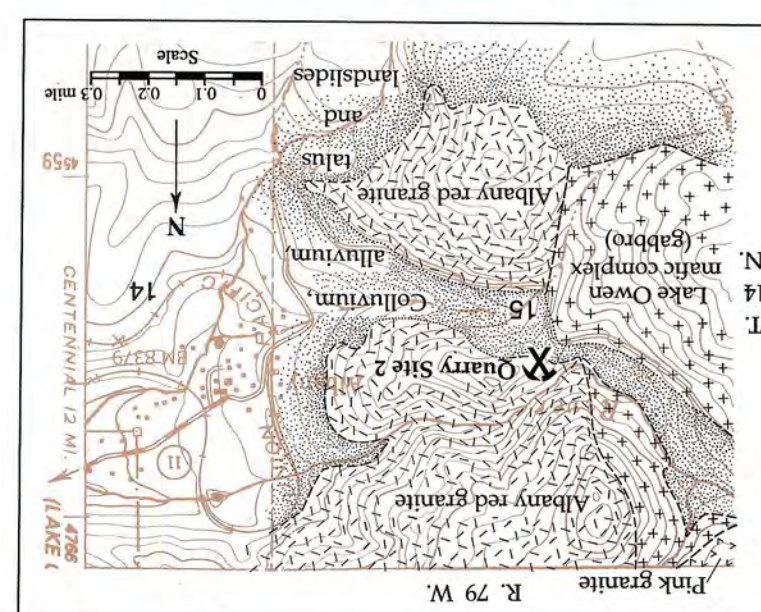
Close-up view of Albany pink granite boulder with inclusions.



Quarried boulders of Albany pink granite.



Site 3. Albany pink granite



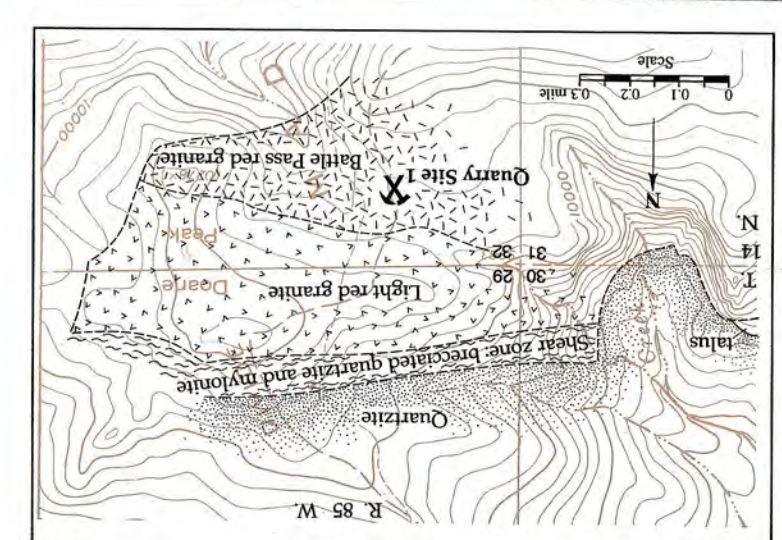
**Location:** A possible quarry site is located in the SE NW section 15, T14N, R78W, about 1/2 mile west of Albany, in Albany County, Wyoming.

**Topographic Quadrangle Map (1:24,000-scale):** Albany, Wyoming.

**Transportation:** This quarry site is less than a mile from a rail siding at Albany via USFS Road 500.

**Description:** The red granite at this site is lighter red than the Battle Pass granite, but because it is found at a much lower elevation, it may be suitable for year-round or 10-month operations. Joint spacings found at the surface indicate this rock might be quarried in 5' x 5' x 10' blocks.

Site 2. Albany red granite



**Location:** Occupies the S/2 SW section 29, SE 1/4 section 30, NE section 31, and the NW 1/4 section 32, T14N, R85W. A possible quarry site is located in the SE NW section 32, T14N, R85W, about 12 miles west of Encampment, in Carbon County, Wyoming.

**Topographic Quadrangle Map (1:24,000-scale):** Red Mountain, Wyoming.

**Transportation:** The site is accessible via graded USFS road and State Highway 70 to Encampment. Rail transportation is available at Saratoga, 20 miles northeast of Encampment.

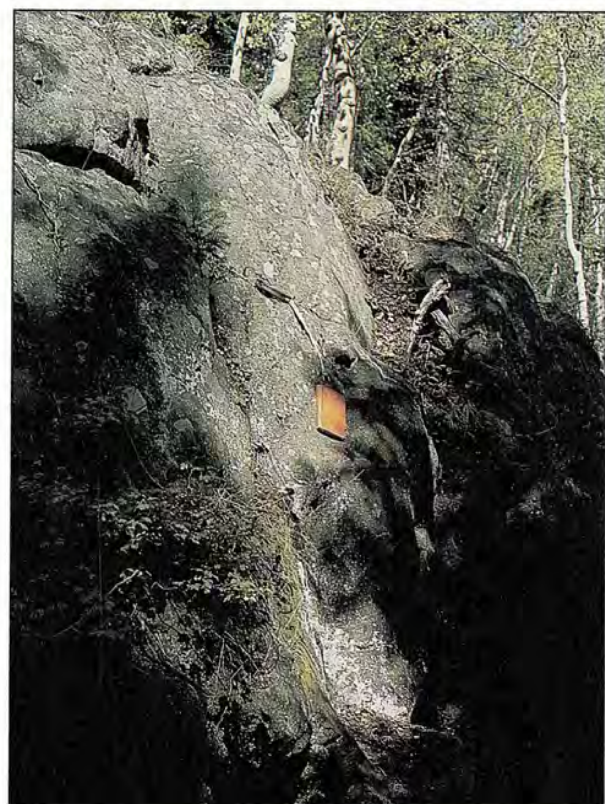
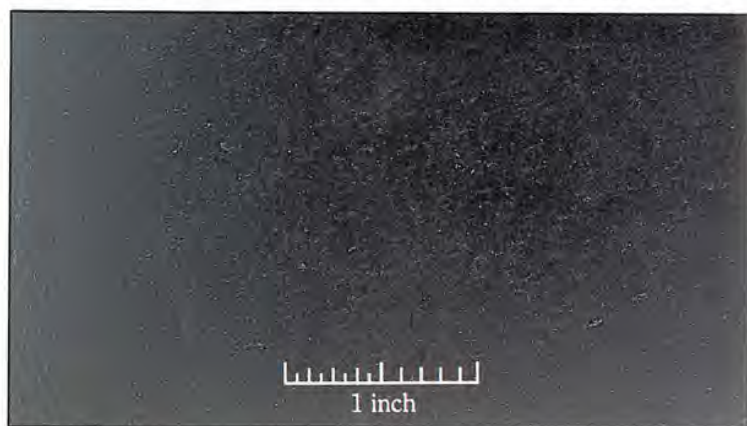


Site 1. Battle Pass red granite



#### Site 4. Albany black granite

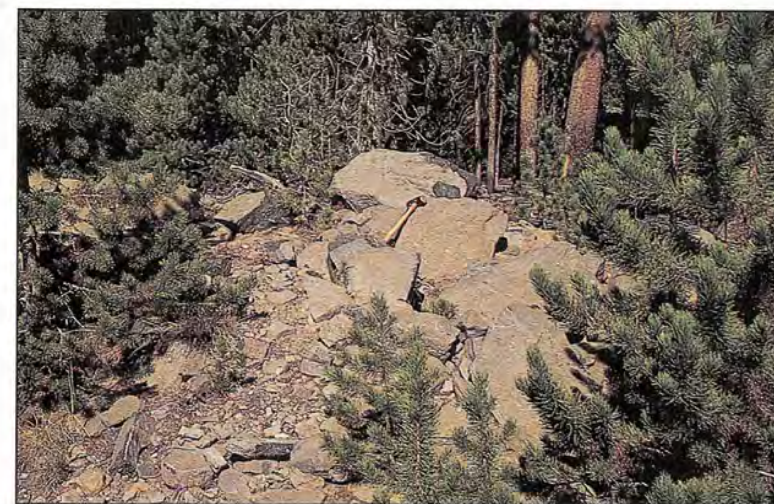
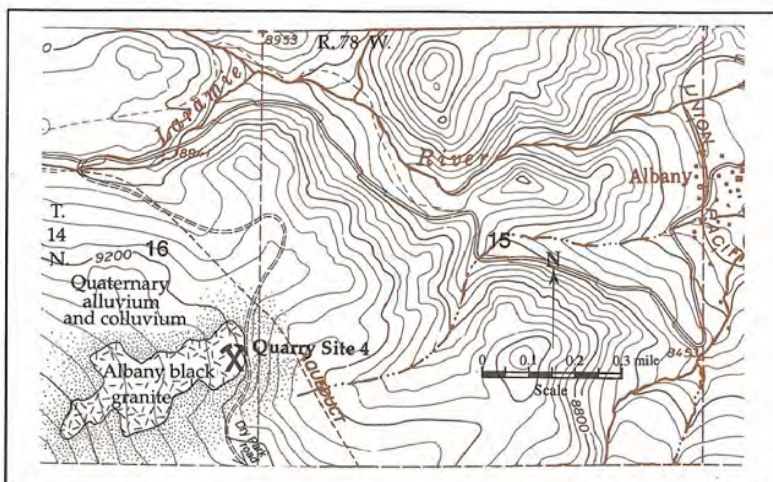
**Location:** This possible site is located in the SE section 16, T14N, R78W, about 1.5 miles southwest of Albany, in Albany County, Wyoming.  
**Topographic Quadrangle Map (1:24,000-scale):** Albany, Wyoming.



Outcrop of Albany black granite.

**Transportation:** The quarry site is less than 3 miles from the rail siding at Albany via USFS gravel road 500 and the Dry Park road.

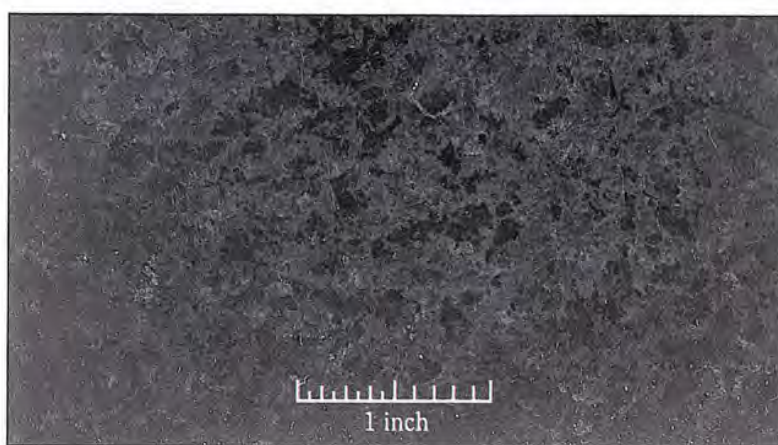
**Description:** The fine-grained, uniform, black rock (geologically classified as a gabbro) at this site is exceptionally durable and resistant to weathering. Exposures in this area indicate the rock might be quarried in 5' x 5' x 10' blocks. Resources of this rock are sufficient enough to possibly provide a valuable stone source from Wyoming.



Outcrop of Albany dark blue granite.

**Description:** As with the Battle Pass red granite (Site 1), the exposures of this elegantly colored stone are small. Nevertheless, the joint spacings over its limited exposure are as much as 4 feet; the joints trend N5°W. The rock is very hard and should make an excellent decorative stone. It will take exploration by shallow trenching and overburden removal to determine the amount of material present.

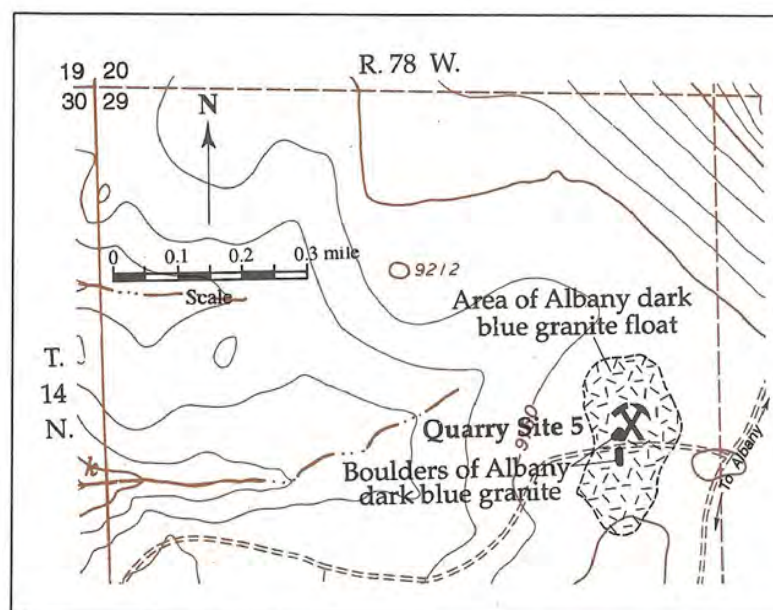
#### Site 5. Albany dark blue granite



**Location:** A possible quarry site is in the SW NE SE section 29, T14N, R78W, about 7 miles southwest of Albany, in Albany County, Wyoming.

**Topographic Quadrangle Map (1:24,000-scale):** Albany, Wyoming.

**Transportation:** The quarry site is less than 7 miles by gravel road from the rail siding at Albany via USFS Road 517 or USFS Road 500 and the Dry Park road.



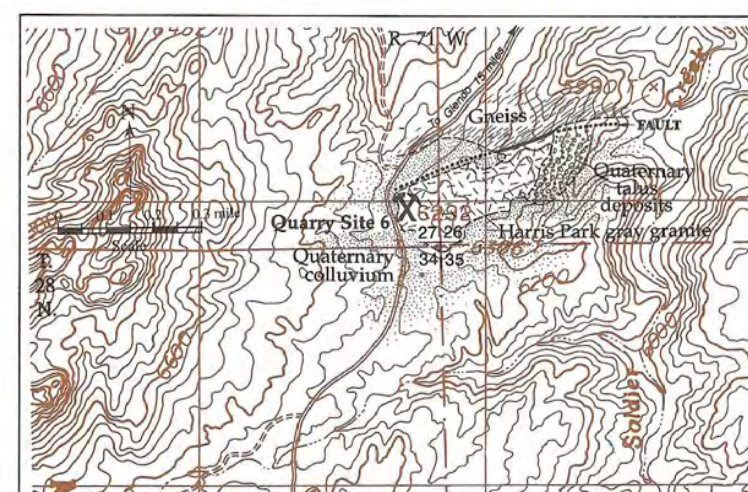
#### Site 6. Harris Park gray granite

**Location:** A possible resource area occupies the SW SW section 26 and the SE SE SE section 27, T28N, R71W. A possible quarry site is located in the SE SE SE section 27, T28N, R71W, in Albany County, about 15 miles southwest of Glendo, in Platte County, Wyoming.

**Topographic Quadrangle Map (1:24,000-scale):** Harris Park, Wyoming.

**Transportation:** A rail siding at Glendo is about 15 miles northeast of the site via USFS Roads 633 and 614 and the Horseshoe Creek road.

**Description:** This grayish rock, with a light beige tone, is exposed in an almost joint-free outcrop near USFS Road 633. Joint spacings are in excess of 40 feet, and quarry blocks may be removed from the surface downward. Small quartz veins and pegmatites are present, but they are at least 40 feet apart.



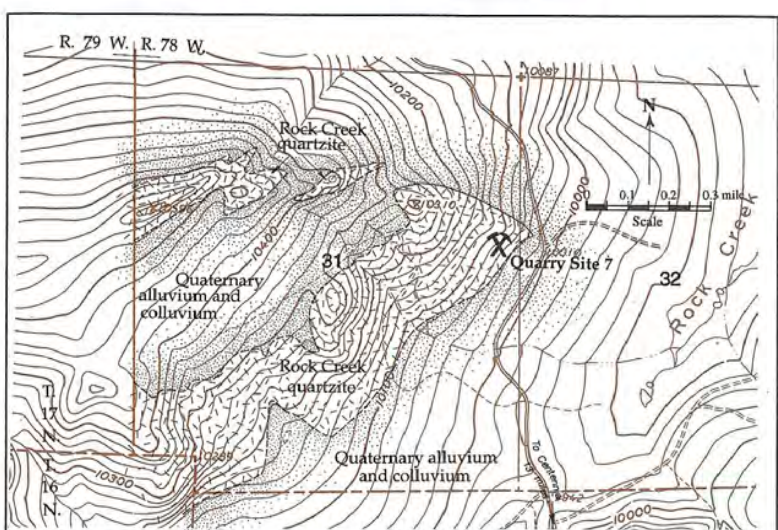
#### Site 7. Rock Creek quartzite

**Location:** Occupies the S/2 and NE section 31, T17N, R78W. A possible quarry site is located in the SE SE NE section 31, T17N, R78W, in Carbon County, about 13 miles north of Centennial, Wyoming.

**Topographic Quadrangle Map (1:24,000-scale):** Morgan, Wyoming.

**Transportation:** A rail siding at Centennial is about 9 miles south of the site via the Sand Creek gravel road (USFS Road 101) and State Highway 130.

**Description:** This very light blue-gray quartzite is exposed at the surface over more than 400 acres. The area is next to the Sand Creek road. Blocks measuring more than 10' x 10' x 10' are present at the surface. Due to the extreme hardness of this rock, it would make an excellent decorative aggregate for use in precast concrete or facing material. It may be possible to cut and polish the material into monument stones.



**Location:** A possible quarry site is located in the N/2 section 4, T13N, R78W, about 5 miles north of Foxpark, and about 7.5 miles south of Albany, in Albany County, Wyoming.

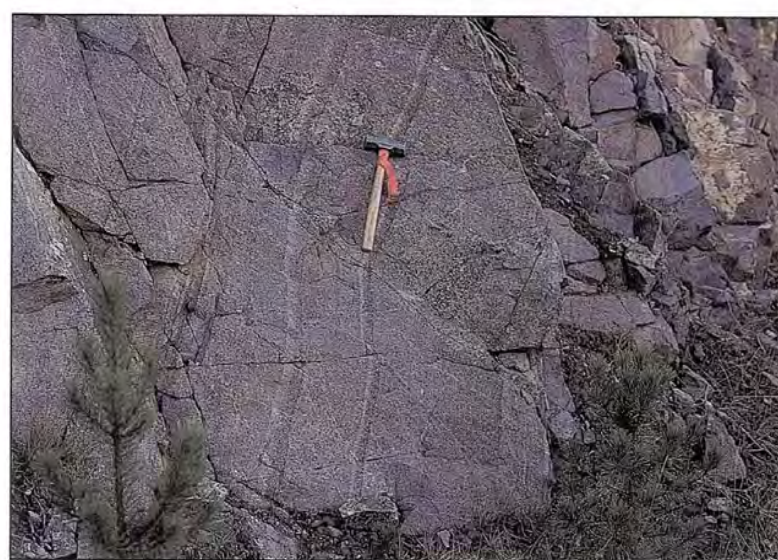
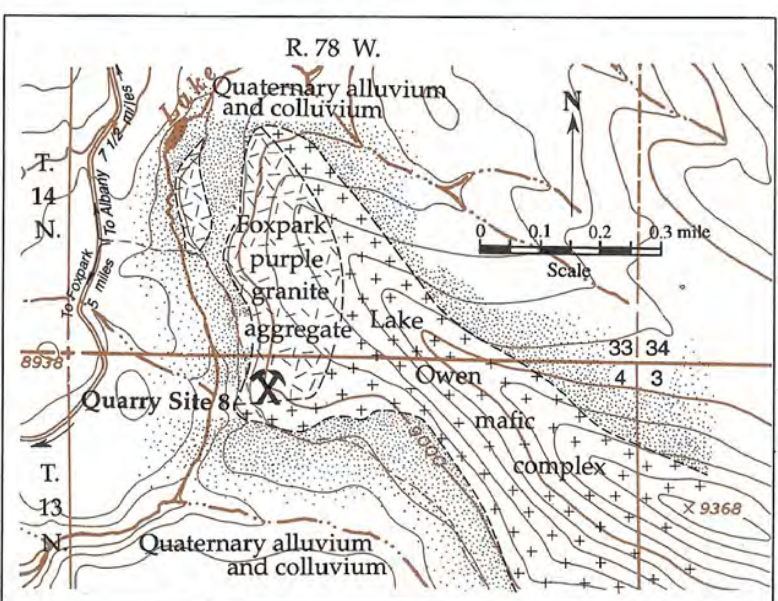
**Topographic Quadrangle Map (1:24,000-scale):** Albany, Wyoming.

**Transportation:** The site is adjacent to USFS Road 517 between Foxpark and Albany; both towns have rail sidings.

**Description:** Due to the unusual color of this rock, this granite (geologically classified as a gabbro) is suitable for decorative aggregate. Color variations within the rock (see photograph below) make it unsuitable for standard-sized quarry blocks.



#### Site 8. Foxpark purple granite aggregate



Outcrop of Foxpark purple granite.

### U.S. Forest Service

The Forest Service is an agency of the U.S. Department of Agriculture. The Medicine Bow National Forest was created by President Theodore Roosevelt May 22, 1902. The Medicine Bow National Forest is divided into seven Ranger Districts plus the National Grasslands District in northeastern Wyoming. A District Ranger and his staff manage a wide variety of public resources and activities in that district. Ranger District offices are located in Laramie, Douglas, Encampment, Rawlins, Centennial, Medicine Bow, and Saratoga.



An excursion train operated by the Wyoming/Colorado Railroad passes through Albany and the Medicine Bow Mountains. (Photograph courtesy of Wyoming/Colorado Railroad.)

### Wyoming State Geological Survey

The Wyoming State Geological Survey is an agency of the State of Wyoming located on the University of Wyoming Campus in Laramie. The mission of the Geological Survey is to study and interpret the geologic, mineral, and energy resources of the State.

### Acknowledgments

This study was funded by a grant from the Rural Development Program of the U.S. Forest Service (USFS). The author especially acknowledges the help of Bob Dettmann, Rural Development Specialist, for his assistance and direction in obtaining this grant. Photographs of polished stones were by the University of Wyoming Photo Service. The author also thanks the following Wyoming State Geological Survey personnel: Phyllis A. Ranz for cartography, Teresa L. Beck for design and layout, and Richard W. Jones for helpful comments and editing.

People with disabilities who require an alternative form of communication in order to use this publication should contact the Editor, Wyoming State Geological Survey, TDD Relay operator 1 (800) 877-9975.

Printed on recycled fiber paper. 3,000 copies printed by Pioneer Printing and Stationery Company, Cheyenne, Wyoming.