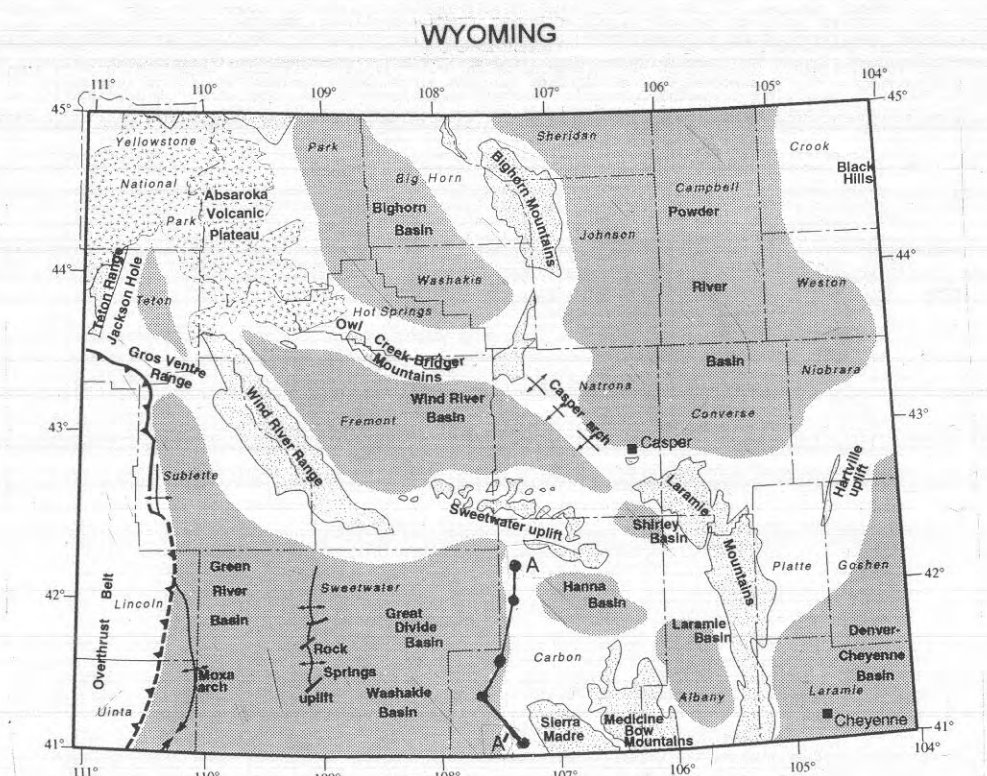
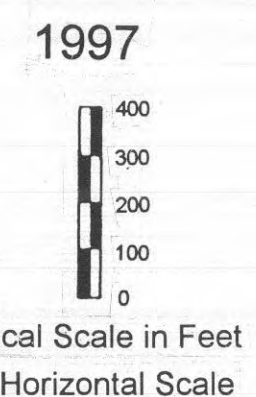


SUBSURFACE CORRELATION OF SELECTED LATE CRETACEOUS AND OLDER FORMATIONS ALONG THE EASTERN MARGIN OF THE GREAT DIVIDE AND WASHAKIE BASINS, GREATER GREEN RIVER BASIN, WYOMING

by
Rodney H. De Bruin

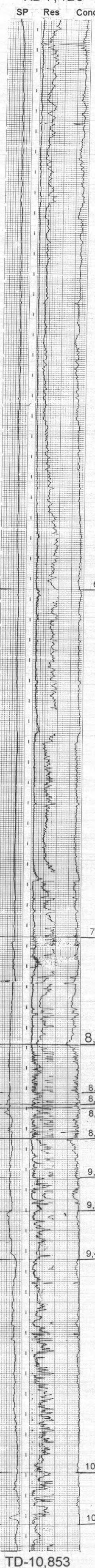


INDEX MAP SHOWING LOCATION OF GEOPHYSICAL LOG CROSS SECTION

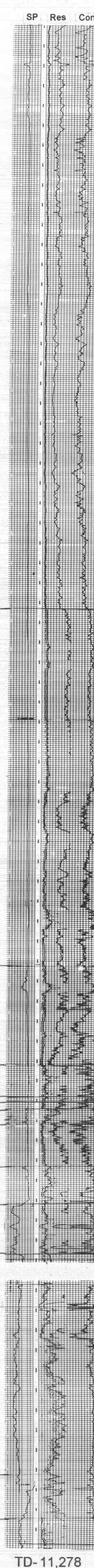
EXPLANATION

Datum is the top of the Mowry Shale.
In some instances the upper part of the geophysical logs are not included because of limits on sheet size.
This cross section has not been reviewed for conformity with the editorial and technical standards of the Wyoming State Geological Survey.

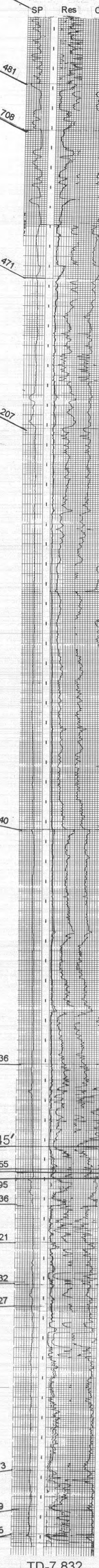
Terineco Oil
Sugar Creek Unit #2
NE SW sec. 35, T19N, R90W
KB-7,426



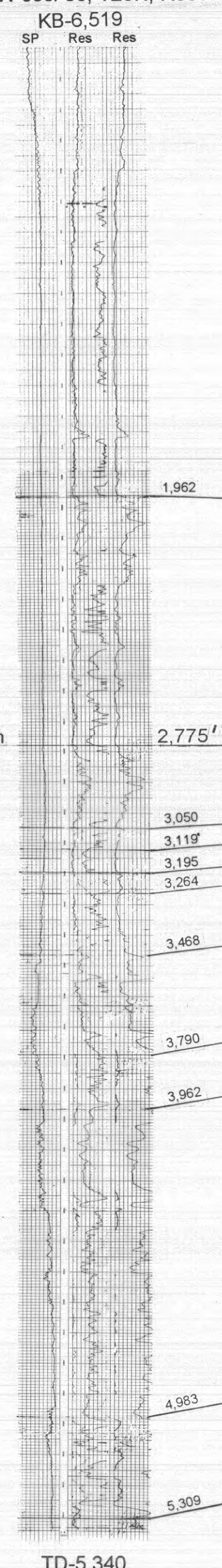
Schio Petroleum
Cow Creek Unit #1
NW SE sec. 12, T16N, R92W
KB-6,654



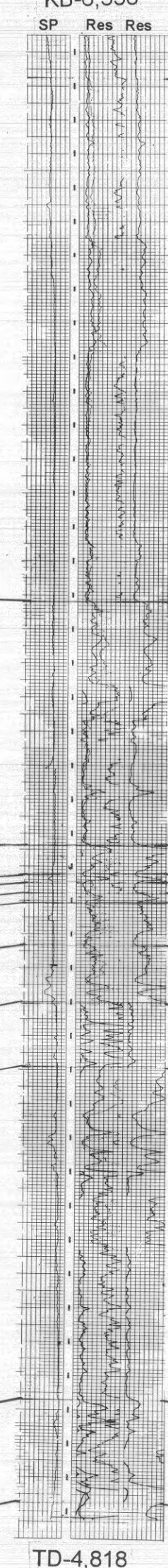
Kirby Royalties
Battle Mountain-State #1
NE SW sec. 36, T13N, R88W
KB-7,345



North
Forest Oil
#30-1 Government
SW SW sec. 30, T25N, R88W
KB-6,519



Warren Petroleum
#1 UPRR
NW SW sec. 1, T23N, R89W
KB-6,538



Kc (Cody Shale)

Kn (Niobrara Formation)

Kf (Frontier Formation)

Kmr (Mowry Shale)

Kmd (Muddy Sandstone)
Kt (Thermopolis Shale)
Kcl-Kd (Cloverly Formation-Dakota Sandstone)

Jm (Morrison Formation)

Js (Sundance Formation)

JFn (Nugget Sandstone)

Fc (Chugwater Formation)

Fpge (Goose Egg Formation)

Pt (Tensleep Sandstone)

Ks (Steele Shale)

Kn

Kf

Kmr Kmd Kt

Jm

Js

JFn

Fc

Fpge

Pt

FMa (Amsden Formation)

8 miles 29 miles 17 miles 32 miles

Datum Datum-Top of Mowry Shale

TD-4,818

TD-10,853

TD-11,278

TD-7,832