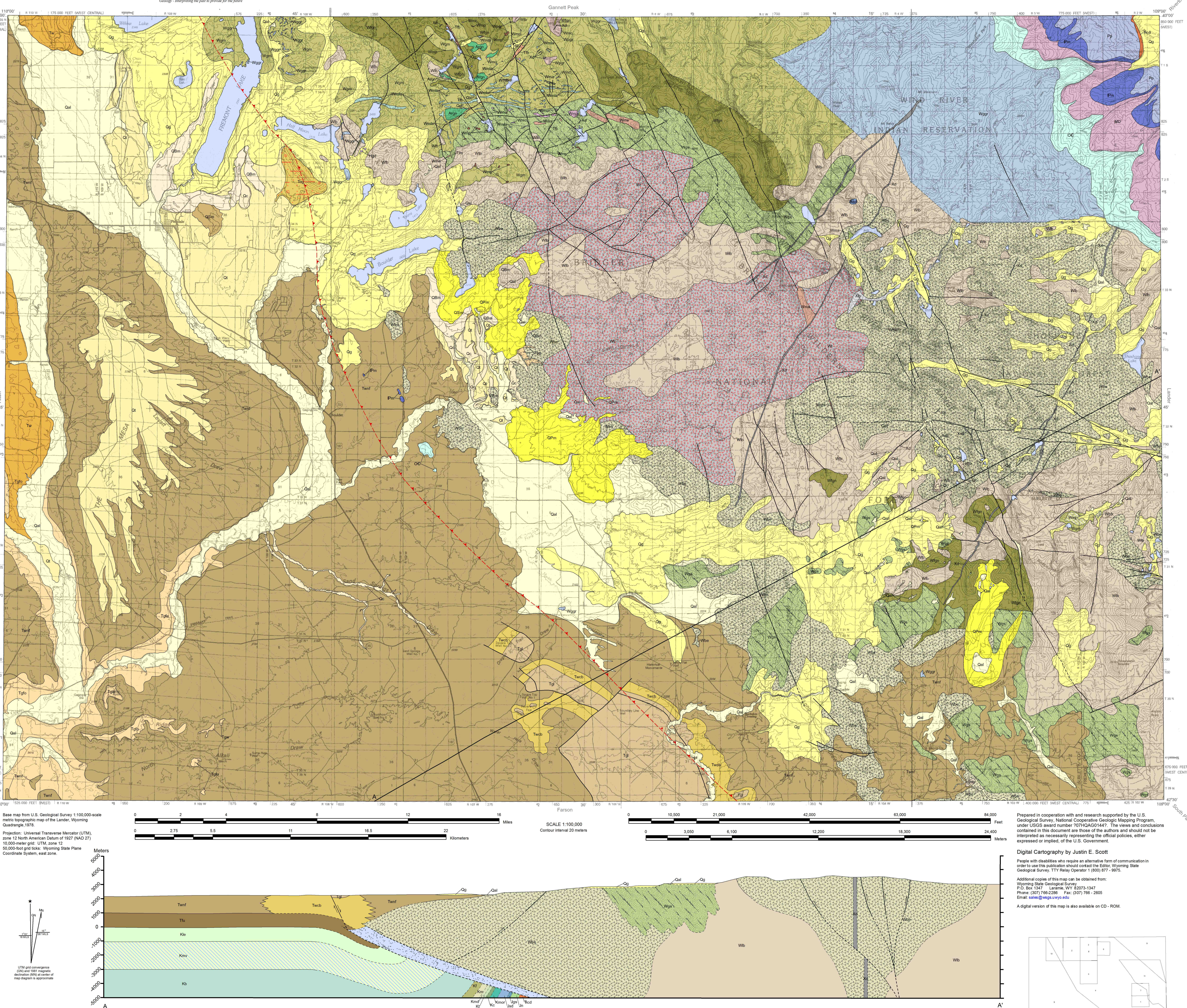
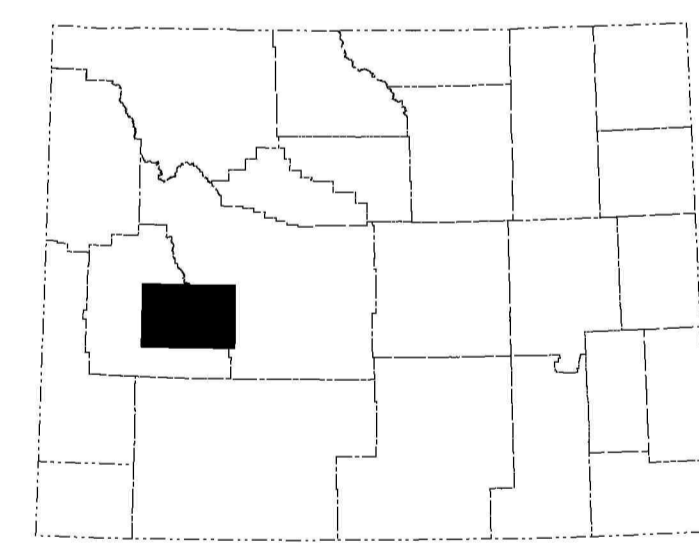


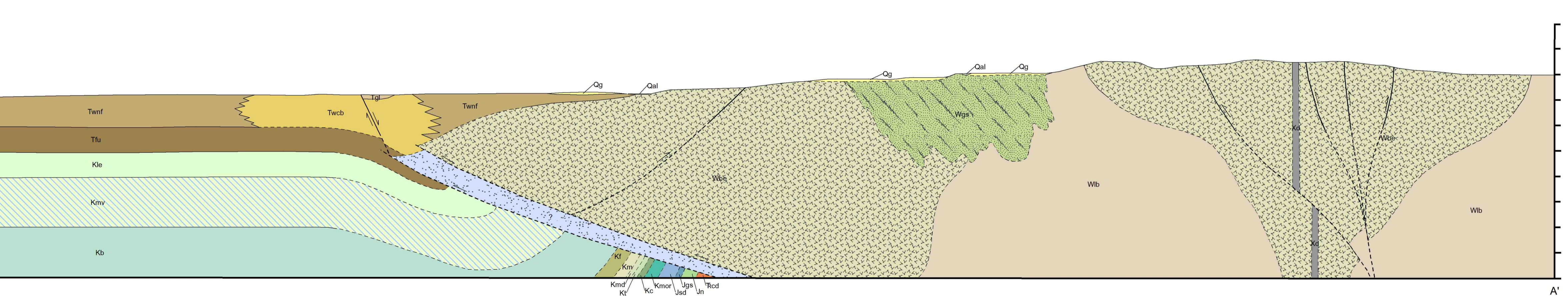
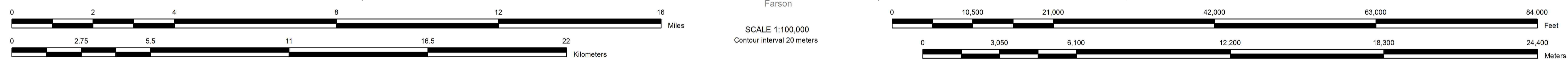
Geology - Interpreting the past to provide for the future



- EXPLANATION**
- Qal Holocene and Pleistocene alluvial deposits-
 - Qt Holocene and Pleistocene terrace deposits-
 - Qc Holocene and Pleistocene colluvium-
 - Qp Pleistocene glacial debris-
 - Qpm Pinedale morainal deposits-
 - Qbm Ball Lake morainal deposits-
 - Qsm Sacagawa Ridge morainal deposits-
 - Tb Tertiary fault Breccia-
 - Tm Tertiary mylonite-
 - Tog Lower Eocene undifferentiated conglomerate beds-
 - Tug Tertiary undifferentiated gravels-
 - Tp Lancy Shale Member of the Green River Formation-
 - Tpw Wilkins Peak Member of the Green River Formation-
 - Tgls Fontenelle Tongue of the Green River Formation-
 - Tw Wasatch Formation-
 - Tamb Cathedral Bluffs Tongue-
 - Tanf New Fork Tongue of the Wasatch Formation
 - Tm Main body of the Wasatch Formation-
 - Fu Fort Union Formation-
 - Kls Lewis Shale-
 - Kmv Mesa Verde Formation-
 - Kb Baxter Shale-
 - Kf Frontier Formation-
 - Km Mowry Shale-
 - Knd Muddy Sandstone-
 - Kt Thermopolis Shale-
 - Kc Cloverly Formation-
 - M Morrison Formation-
 - S Sundance Formation-
 - Gsp Gypsum Springs Formation-
 - N Nugget Sandstone-
 - Chugwater Group and Dinwoody Formation undivided
 - Pp Phosphoria and Park City formations undivided
 - Pst Tenleep Sandstone-
 - MD Madison Limestone and Darby Formation undivided
 - OC Bighorn Dolomite-
 - PRECAMBRIAN ROCKS**
 - Kd diabase dikes-
 - spotted dikes
 - Xp felspathic peridotite
 - Wgr porphyritic granite
 - Wgr gray granite
 - Bears Ears Pluton-
 - transition zone between Bears Ears pluton & Louis Lake batholith
 - Louis Lake batholith-
 - albite-quartz rock-
 - Wbh biotitic & hornblende paragneiss-
 - gfcis gneiss orthogneiss-
 - Wgm gray migmatite gneiss-
 - Wms metaclements-
 - Wsc gneiss supracrustal rocks-
 - Wmp mafic pods-
 - Wma agmatitic Migmatite-
 - Wmc coarse-grained amphibolite-
 - Wmu ultramafic Pods
 - Wmb laminated Amphibolite-
 - Wmb laminated Amphibolite Breccia-



Reference Map of Project Area

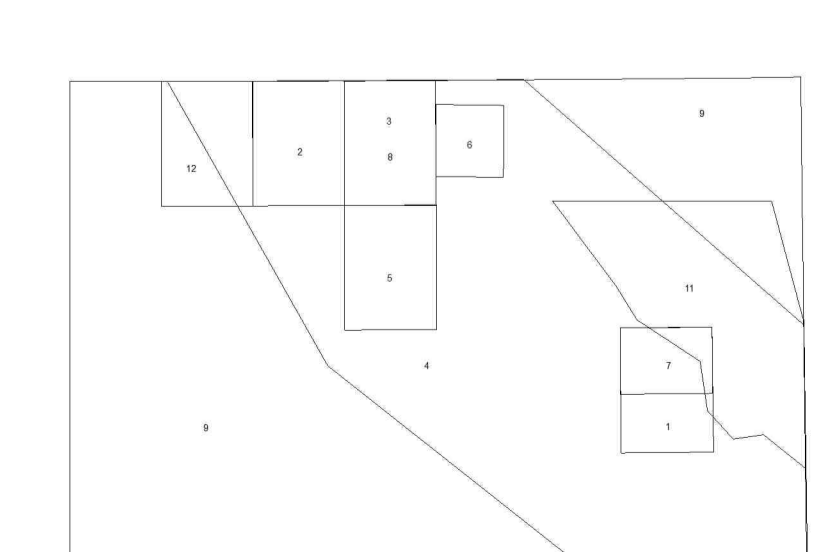


Prepared in cooperation with and research supported by the U.S. Geological Survey, National Cooperative Geologic Mapping Program, under USGS award number 707W2AG01447. The views and conclusions contained in this document are those of the authors and should not be interpreted as necessarily representing the official policies, either expressed or implied, of the U.S. Government.

Digital Cartography by Justin E. Scott
 People with disabilities who require an alternative form of communication in order to use this publication should contact the Editor, Wyoming State Geological Survey, TTY Relay Operator 1 (800) 877-9975.

Additional copies of this map can be obtained from:
 Wyoming State Geological Survey
 P.O. Box 1347, Laramie, WY 82073-1347
 Phone: (307) 786-2388 Fax: (307) 786-2805
 Email: sales@wsgs.wyo.gov

A digital version of this map is also available on CD-ROM.



INDEX TO GEOLOGIC MAPPING
 (numbers are those listed in the sources of geologic data)

DISCLAIMERS

Users of these maps are cautioned against using the data at scales different from those at which the maps were compiled. Using this data at a larger scale will not provide greater accuracy and is, in fact, a misuse of the data.

The Wyoming State Geological Survey (WSGS) and the State of Wyoming make no representation or warranty, expressed or implied, regarding the use, accuracy, or completeness of the data presented herein, or from a map printed from these data. The act of distribution shall not constitute such a warranty. The WSGS does not guarantee the digital data or any map printed from the data to be free of errors or omissions.

The WSGS and the State of Wyoming disclaim any responsibility or liability for interpretations made from these digital data or from any map printed from these digital data, and for any decisions based on the digital data or printed maps. The WSGS and the State of Wyoming retain and do not waive sovereign immunity.

The use of a reference to trademarks, trade names, or other product or company names in this publication is for descriptive or informational purposes, or is pursuant to licensing agreements between the WSGS or State of Wyoming and software or hardware development vendors, and does not imply endorsement of those products by the WSGS or the State of Wyoming.

NOTICE TO USERS OF WYOMING STATE GEOLOGICAL SURVEY INFORMATION

Most information produced by the Wyoming State Geological Survey (WSGS) is public domain, is not copyrighted, and may be used without restriction. We ask that users credit the WSGS as a courtesy when using this information in whole or in part. This applies to published and unpublished materials in printed or electronic form. Contact the WSGS if you have any questions about citing materials or preparing acknowledgments. Your cooperation is appreciated.

**PRELIMINARY GEOLOGIC MAP OF THE PINEDALE 30' X 60' QUADRANGLE
 SUBLETTE AND FREMONT COUNTIES, WYOMING**

By
 Justin E. Scott and Wayne M. Sutherland