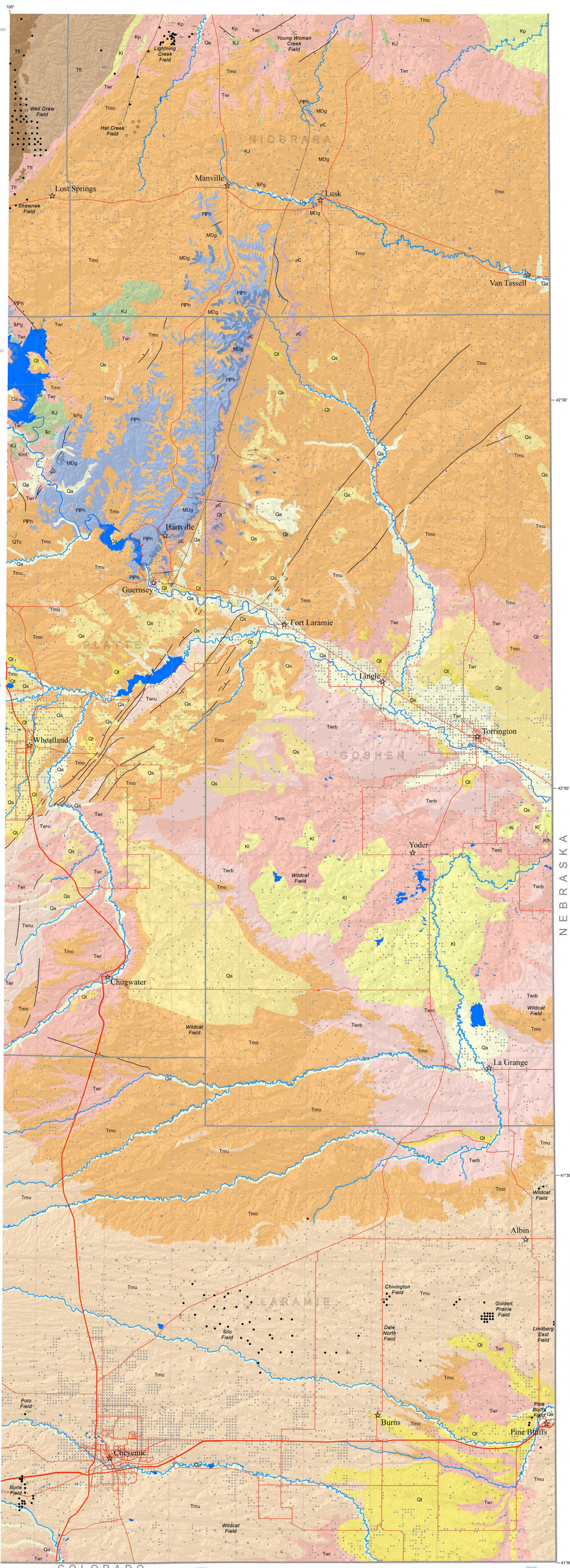


Geology, Interpreting the past  
providing for the future



104°  
-43'00"



**Explanation**

- Normal fault - location certain
- Normal fault - location concealed
- Thrust fault - location certain
- Thrust fault - location concealed
- ☆ Towns
- Interstates
- Highways
- Lakes, Ponds, and Reservoirs
- Streams
- County boundary
- State boundary
- 1:100,000 scale map boundaries
- ☆ Groundwater Well Permits

**Oil and Gas Wells**

- Approved Permit
- Producing Oil
- Producing Gas
- Shut In

**Geology**

- CENOZOIC**
- Quaternary**
- Qa Alluvium
  - Qt Terrace Gravel
  - Qs Sand and Loess
  - Ql Lacustrine deposits
- Quaternary-Tertiary**
- QTc Conglomerate
- Tertiary**
- Tmu Upper Miocene (Ogallala)
  - Tmo Lower Oligocene (Arikaree)
  - Twr White River Formation
  - Twru Upper White River
  - Twrb Brule Member of White River
  - Twrc Chadron Member of White River
  - Ttl Lebo Member of Fort Union
  - Ttl Tullock Member of Fort Union
- MESOZOIC**
- Upper Cretaceous**
- Kl Lance Formation
  - Klh Fox Hills Sandstone
  - Kle Lewis Shale
  - Kp Pierre Shale
- Lower Cretaceous**
- Kmt Mowry and Thermopolis Shales
- Jurassic**
- Kj Cloverly and Morrison Formations
  - Js Sundance Formation
- Triassic**
- Tc Chugwater Formation
  - TEPg Goose Egg Formation
- PALEOZOIC**
- PPh Hartville Formation
  - MDg Guernsey Formation
- PRECAMBRIAN**
- pC Undifferentiated Precambrian

**Well Statistics**

OIL AND GAS WELLS	
Approved Permit	41
Producing Oil	174
Producing Gas	13
Shut In	14
GROUNDWATER WELLS	
Domestic	9719
Municipal	127
Irrigation	2148
Industrial	123
Test	54
Stock	9304
Monitoring	2192
Miscellaneous	1045

**Field Statistics**

Oil Produced (bbls)					
Field	Silo	Borie	Golden Prairie	Pine Bluffs	
2010	182,119	54,336	103,902	4,606	
2009	82,618	60,767	156,901	3,952	
2008	91,046	73,668	263,260	3,278	
2007	91,373	77,643	185,949	4,710	
2006	110,548	93,598	10,704	5,095	
<b>Cumm</b>	<b>10,209,101</b>	<b>6,208,970</b>	<b>3,140,805</b>	<b>1,733,569</b>	
Gas Produced (mcf)					
Field	Chivington	Lindberg East	Dale North	Polo	
2010	29,077	3,443	1,892	594	
2009	7,953	3,051	2,026	624	
2008	8,096	1,537	2,119	950	
2007	11,460	3,975	2,031	668	
2006	12,735	4,644	2,073	668	
<b>Cumm</b>	<b>8,900,135</b>	<b>2,221,463</b>			

**References**

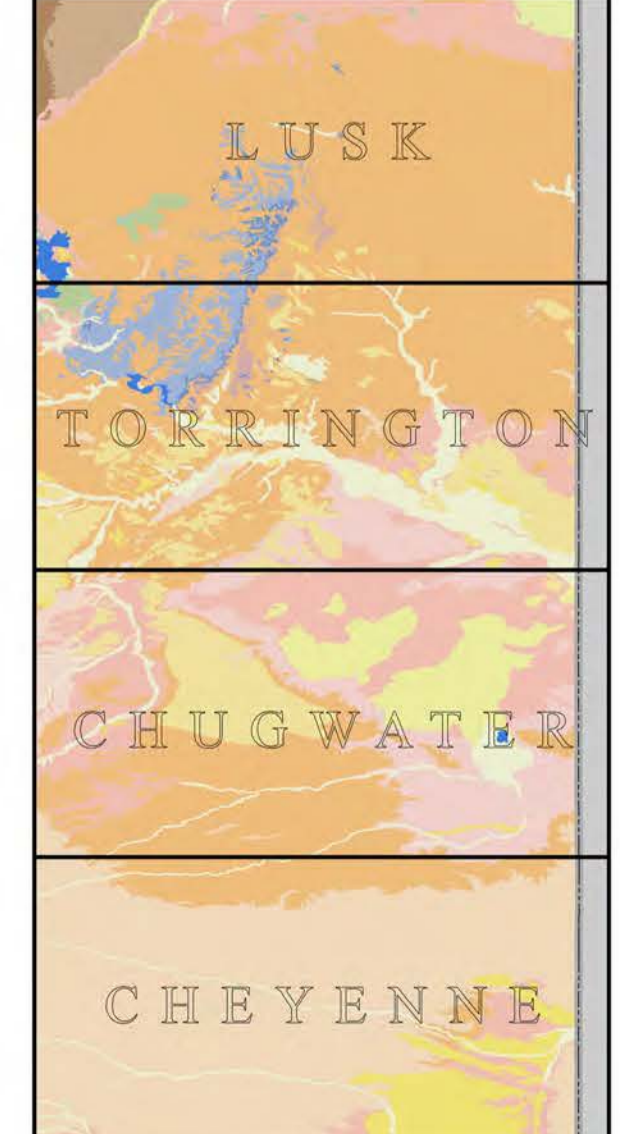
- Love, J.D., and Christiansen, A.C., 1985, Geologic map of Wyoming: U.S. Geological Survey, scale 1:500,000.
- Wyoming Oil & Gas Conservation Commission, 2011, <http://wogcc.state.wy.us>
- Wyoming State Engineer's Office, 2011, Groundwater Well Permits, e-Permit system.
- U.S. Geological Survey 2009, National Hydrography Dataset.

**Notice To Users Of Information From The Wyoming Geological Survey**

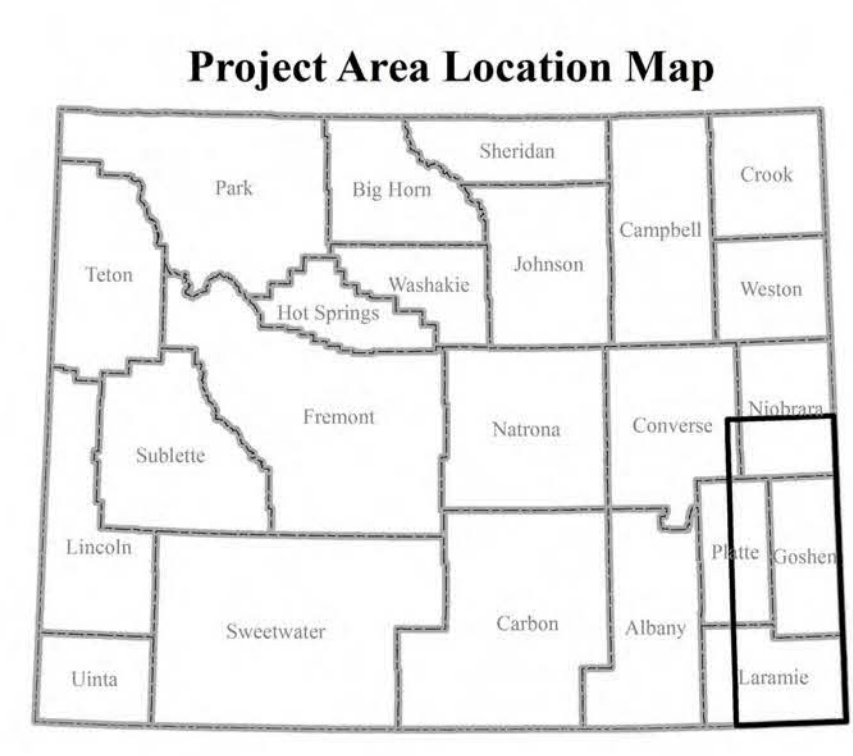
The WSGS encourages the fair use of its material. We request that credit be expressly given to the "Wyoming State Geological Survey" when citing information from this publication. Please contact the WSGS at 307-766-2286, ext. 224, or by e-mail at [sales-wgs@uwyo.edu](mailto:sales-wgs@uwyo.edu) if you have any questions about citing materials, preparing acknowledgments, or extensive use of this material. We appreciate your cooperation.

Individuals with disabilities who require an alternative form of this publication should contact the WSGS (see contact information above). TTY relay operator 800-877-9975.

For more information about the WSGS or to order publications and maps, please go to [www.wgs.wyo.edu](http://www.wgs.wyo.edu), call 307-766-2286, ext. 224, or e-mail [sales-wgs@uwyo.edu](mailto:sales-wgs@uwyo.edu).



Geologic maps available at 1:100,000 scale on accompanying CD.



Map projection: Lambert Conformal Conic  
Central Meridian: -104.5  
Standard Parallel: 33.0  
Standard Parallel: 45.0  
Latitude origin: 41.0  
Horizontal Datum: North American Datum of 1983  
Ellipsoid: Geodetic Reference System 80

SCALE 1:200,000  
0 4 8 16 Kilometers 0 2.5 5 10 Miles

Compiled by  
Jim Stafford and Tomas Gracias  
2011

**SELECT GEOLOGY  
OIL, GAS, AND WATER WELLS  
OF  
SOUTHEASTERN WYOMING**



**DISCLAIMERS**  
Users of these maps are cautioned against using the data at scales different from those at which the maps were compiled. Using this data at a larger scale will not provide greater accuracy and is, in fact, a misuse of the data.  
The Wyoming State Geological Survey (WSGS) and the State of Wyoming make no representation or warranty, expressed or implied, regarding the accuracy, or completeness of the data presented herein, or from a map printed from these data. The act of distribution shall not constitute such a warranty. The WSGS does not guarantee the digital data or any map printed from the data to be free of errors or inaccuracies.  
The WSGS and the State of Wyoming disclaim any responsibility or liability for interpretations made from these digital data or from any map printed from these digital data, and for any decisions based on the digital data or printed maps. The WSGS and the State of Wyoming retain and do not waive sovereign immunity.  
The use of or reference to trademarks, trade names, or other product or company names in this publication is for descriptive or informational purposes only, or is pursuant to licensing agreements between the WSGS or State of Wyoming and software or hardware developers, vendors, and does not imply endorsement of those products by the WSGS or the State of Wyoming.