

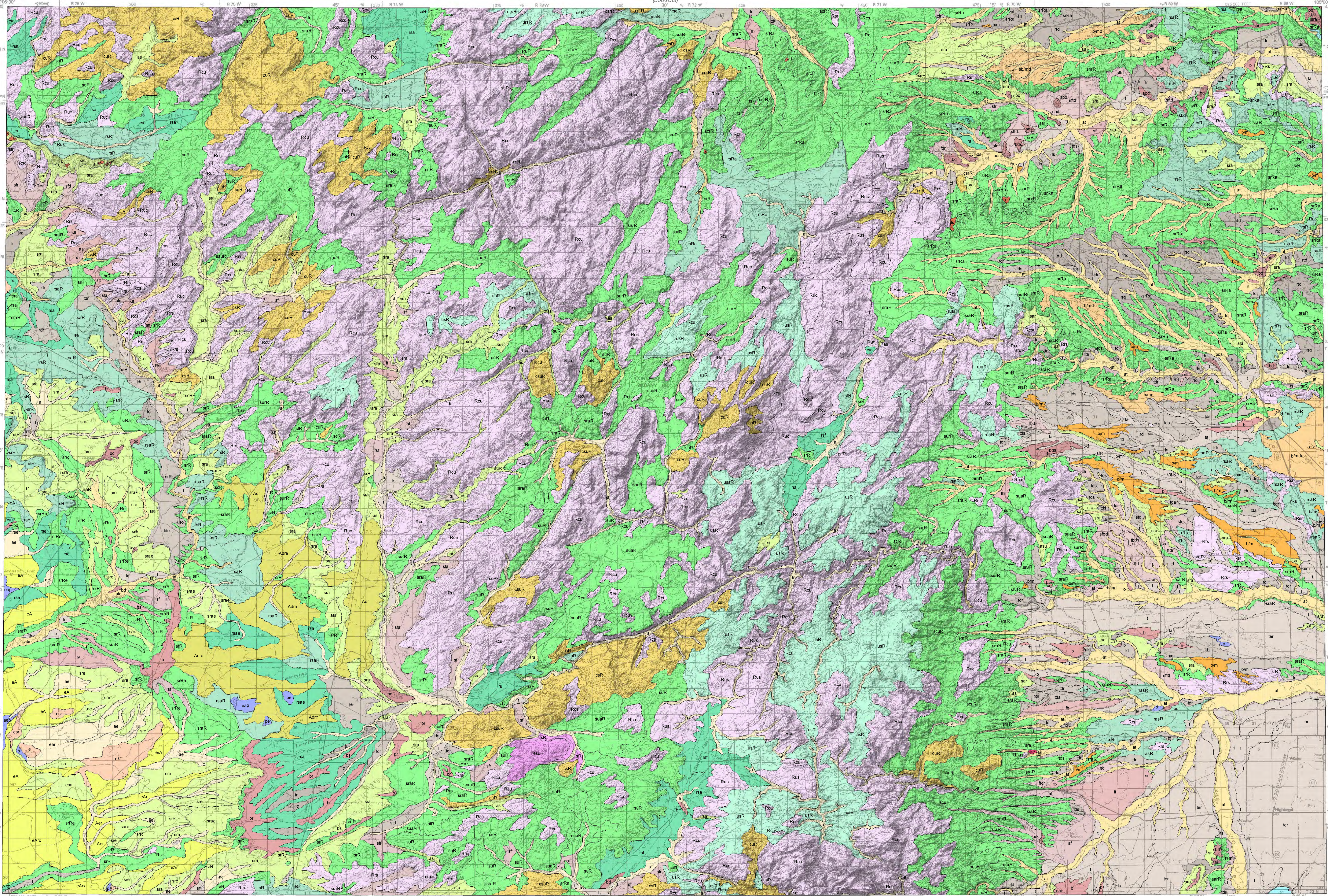
Interpreting the past, providing for the future



EXPLANATION

DESCRIPTION AND CLASSIFICATION OF MAP UNITS

- Alluvial deposits**
 - Alluvium, alluvium with scattered eolian deposits and/or residuum (a, ae, ar, car)
 - Alluvium mixed with terrace deposits and alluvium mixed with terrace deposits and scattered eolian deposits (at, ate)
- Alluvial fan deposits**
 - Alluvial fan deposits mixed with alluvium and/or slopewash and/or residuum (af, fsr, sf, sfa, sfi)
 - Alluvial fan deposits grading into old alluvial plain deposits, bench deposits, or terrace deposits, and/or mixed with residuum or slopewash (fA, fB, fC, fD, fE, fF)
 - Alluvial fan deposits grading into dissected bench deposits, mixed with slopewash (fbds, sbds)
 - Dissected alluvial fan deposits and dissected alluvial fan deposits that grade into terrace deposits mixed with slopewash or residuum (fd, fdr, sfd, fld, fdr, sfd)
- Old alluvial plain deposits**
 - Old alluvial plain deposits covered by eolian deposits, old alluvial plain deposits covered by eolian deposits and residuum, and old alluvial plain deposits covered by eolian deposits and residuum on truncated, upturned bedrock (Aer, eA, eAr, eArx, etA)
 - Dissected old alluvial plain deposits mixed with residuum and/or eolian deposits (Adr, Adre)
- Bench deposits**
 - Bench deposits and bench deposits mixed with residuum or slopewash (b, br, bs)
 - Dissected bench deposits and dissected bench deposits mixed with residuum or slopewash (bd, bdr, bds, sbd)
- Bench/mesa deposits**
 - Bench deposits/mesa caprock (b/m)
 - Dissected bench deposits/mesa caprock and dissected bench deposits/mesa caprock with a thin cover of eolian deposits or slopewash (bmd, bmdr, sbmd)
- Terrace deposits**
 - Terrace deposits and terrace deposits mixed with alluvium, eolian deposits, or slopewash and/or residuum (ter, t, te, ter, ts)
 - Dissected terrace deposits and dissected terrace deposits mixed with alluvium, eolian deposits, residuum, or slopewash (std, td, tda, tdr, tds)
 - Shallow terrace deposits mixed with residuum (tr)
 - Dissected shallow terrace deposits mixed with residuum (rtd)
- Eolian deposits**
 - Eolian deposits and eolian deposits mixed with residuum and alluvium or slopewash (e, er, esr)
- Landslide deposits**
 - Landslides and landslides mixed with slopewash (l, ls)
- Playa lake and playa lake deposits**
 - Playa lake and playa lake deposits, playa lake and playa lake deposits mixed with eolian deposits, and playa lake and playa lake deposits mixed with eolian deposits and alluvium (aeq, cap, p, pc)
- Slopewash**
 - Slopewash mixed with alluvium or residuum, slopewash mixed with alluvium and residuum and/or eolian deposits, slopewash mixed with alluvium and/or eolian deposits, or alluvial fan deposits (as, ar, asu, esa, sa, sac, sar, sare, ser, sr, sra, srac, sre, srf)
 - Slopewash mixed with scattered bedrock outcrops and slopewash, colluvium, alluvial fan deposits, residuum, or grus; slopewash mixed with scattered bedrock outcrops, alluvium, and grus; slopewash mixed with scattered bedrock outcrops, colluvium, and residuum; slopewash mixed with scattered bedrock outcrops, colluvium, and grus; slopewash mixed with scattered bedrock outcrops, residuum, and grus; and slopewash mixed with scattered bedrock outcrops, residuum, and eolian deposits (sar, sarR, saurR, sarR, sarR, sarR, sAr, srR, srR, srR, srR, srR, srR, suR, suR, suR, suR)
- Colluvium**
 - Colluvium mixed with scattered bedrock outcrops and slopewash or grus, colluvium mixed with scattered bedrock outcrops, slopewash, and residuum, and colluvium mixed with scattered bedrock outcrops, slopewash, and grus (esR, esR, cuR, cuR)
- Residuum**
 - Residuum mixed with alluvium and/or slopewash and eolian deposits and residuum mixed with slopewash and eolian deposits or alluvial fan deposits (ra, rs, rse, rse, rd)
 - Residuum mixed with scattered bedrock outcrops and slopewash or alluvium, residuum mixed with scattered bedrock outcrops, slopewash, and alluvium, and residuum mixed with scattered bedrock outcrops, slopewash, and colluvium or alluvial fan deposits (rA, rA, rAR, rAR, rAR, rAR, rAR)
 - Residuum mixed with scattered bedrock outcrops and grus (ruR, ruR, urR, urR, usR)
- Bedrock**
 - Bedrock, bedrock mixed with residuum or slopewash, bedrock mixed with colluvium and slopewash and/or grus, bedrock mixed with residuum and slopewash, and bedrock mixed with grus and slopewash (R, Res, Resu, Ru, Rr, Rs, Rsc, Rscu, Rsr, Rsr, Rus)
 - Bedrock with a thin mantle of slopewash and bedrock with a thin mantle of slopewash, eolian deposits, and grus (easR, sR)
- Mined area**
 - Area disturbed by mining (M)
- Water feature**
 - Lake, reservoir, river, or stream



Base map from U.S. Geological Survey 1:100,000-scale metric topographic map of the Laramie Peak, Wyoming Quadrangle, 1981.

Base Nittshade derived from USNADNCRS-National Cartography & Geospatial Center 10-meter Digital Elevation Model (DEM), 2000; azimuth 1195°, scan angle 45°, vertical exaggeration 1.2.

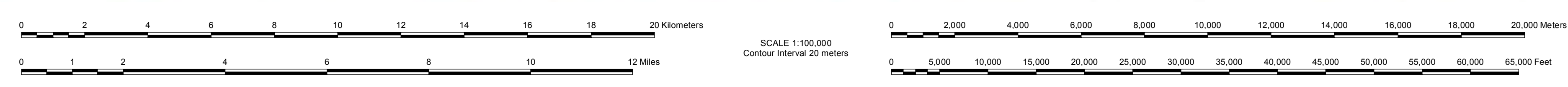
Projection: Universal Transverse Mercator (UTM), zone 13 North American Datum of 1983 (NAD 83)

10,000-meter grid ticks: UTM, zone 13

25,000-foot grid ticks: Wyoming State Plane Coordinate System, east zone

UTM grid convergence (GN) and 25,000-foot grid ticks: 2015 magnetic declination (MN) at center of map

Diagram is approximate



Geology mapped circa 1995 by Laura L. Halberg and James C. Case

Digital cartography by Thomas E. Ver Ploeg and Suzanne C. Lühr

Map edited by Phyllis A. Ranz

Wyoming State Geological Survey
P.O. Box 1347 • Laramie, WY 82073-1347
Phone: 307-766-2286 • Fax: 307-766-2605
Email: wgs.sales@wyo.gov

PRELIMINARY SURFICIAL GEOLOGIC MAP OF THE LARAMIE PEAK 30' x 60' QUADRANGLE,
ALBANY, PLATTE, AND CONVERSE COUNTIES, WYOMING

DISCLAIMERS

Users of this map are cautioned against using the data at scales different from those at which the map was compiled. Using these data at a larger scale will not provide greater accuracy and is a misuse of the data.

The Wyoming State Geological Survey (WSGS) and the State of Wyoming make no representation or warranty, expressed or implied, regarding the use, accuracy, or completeness of the data presented herein, or a map printed from these data. The act of distribution shall not constitute such a warranty. The WSGS does not guarantee the digital data or any map printed from the data to be free of errors or inaccuracies.

The WSGS and the State of Wyoming disclaim any responsibility or liability for interpretations made from these digital data or from any map printed from these digital data, and for any decisions based on the digital data or printed maps. The WSGS and the State of Wyoming claim and do not waive sovereign immunity.

The use of or reference to trademarks, trade names, or other product or company names in this publication is for descriptive or informational purposes only, or in pursuit to licensing agreements between the WSGS or State of Wyoming and software or hardware developers/vendors, and does not imply endorsement of those products by the WSGS or the State of Wyoming.

compiled and mapped by
Laura L. Halberg and James C. Case
2015

NOTICE TO USERS OF INFORMATION FROM THE WYOMING STATE GEOLOGICAL SURVEY

The WSGS encourages the fair use of its material. We request that credit be expressly given to the "Wyoming State Geological Survey" when citing information from this publication. Please contact the WSGS at 307-766-2286, ext. 224, or by email at wgs.sales@wyo.gov if you have questions about citing materials, preparing acknowledgments, or extensive use of this material. We appreciate your cooperation.

Individuals with disabilities who require an alternative form of this publication should contact the WSGS. For the TTY relay operator call 800-877-9975.

For more information about the WSGS or to order publications and maps, go to www.wsgs.wyo.gov, call 307-766-2286, ext. 224, or email wgs.sales@wyo.gov.

NOTICE FOR OPEN FILE REPORTS PUBLISHED BY THE WSGS

This WSGS Open File Report has not been technically reviewed or edited for conformity with WSGS standards or Federal Geographic Data Committee digital cartographic standards. Open File Reports are preliminary and usually require additional fieldwork and/or compilation and analysis; they are meant to be a first release of information for public comment and review. The WSGS welcomes any comments, suggestions, and contributions from users of the information.

Volcanoes HSDM 01-1	Coaly HSDM 02-1	Flint HSDM 03-1	Burgess HSDM 04-1	Shawnee HSDM 05-1	Reverie HSDM 06-1	Texas Tower HSDM 07-1
Volcanoes HSDM 01-2	Coaly HSDM 02-2	Flint HSDM 03-2	Burgess HSDM 04-2	Shawnee HSDM 05-2	Reverie HSDM 06-2	Texas Tower HSDM 07-2
Jackson HSDM 08-1	The Barren HSDM 09-1	Thermopsis HSDM 10-1	Hogback HSDM 11-1	Lytle HSDM 12-1	Melrose HSDM 13-1	Bill HSDM 14-1
Jackson HSDM 08-2	The Barren HSDM 09-2	Thermopsis HSDM 10-2	Hogback HSDM 11-2	Lytle HSDM 12-2	Melrose HSDM 13-2	Bill HSDM 14-2
Alton HSDM 15-1	Placidie HSDM 16-1	Lander HSDM 17-1	Rathbone HSDM 18-1	Casper HSDM 19-1	Douglas HSDM 20-1	Loak HSDM 21-1
Alton HSDM 15-2	Placidie HSDM 16-2	Lander HSDM 17-2	Rathbone HSDM 18-2	Casper HSDM 19-2	Douglas HSDM 20-2	Loak HSDM 21-2
Kamrover HSDM 22-1	Rock Springs HSDM 23-1	Red Desert HSDM 24-1	Railroad HSDM 25-1	Medicine Bow HSDM 26-1	Rock River HSDM 27-1	Chaparral HSDM 28-1
Kamrover HSDM 22-2	Rock Springs HSDM 23-2	Red Desert HSDM 24-2	Railroad HSDM 25-2	Medicine Bow HSDM 26-2	Rock River HSDM 27-2	Chaparral HSDM 28-2

KEY TO ABBREVIATIONS
U.S. Geological Survey maps: Coal Investigation Series (USGS C), Wyoming State Geological Survey maps: Map Series (MS), Open File Report (OFR) and Hazards Section Digital Map (HSDM)

INDEX TO 1:100,000-SCALE SURFICIAL GEOLOGIC MAPS OF WYOMING